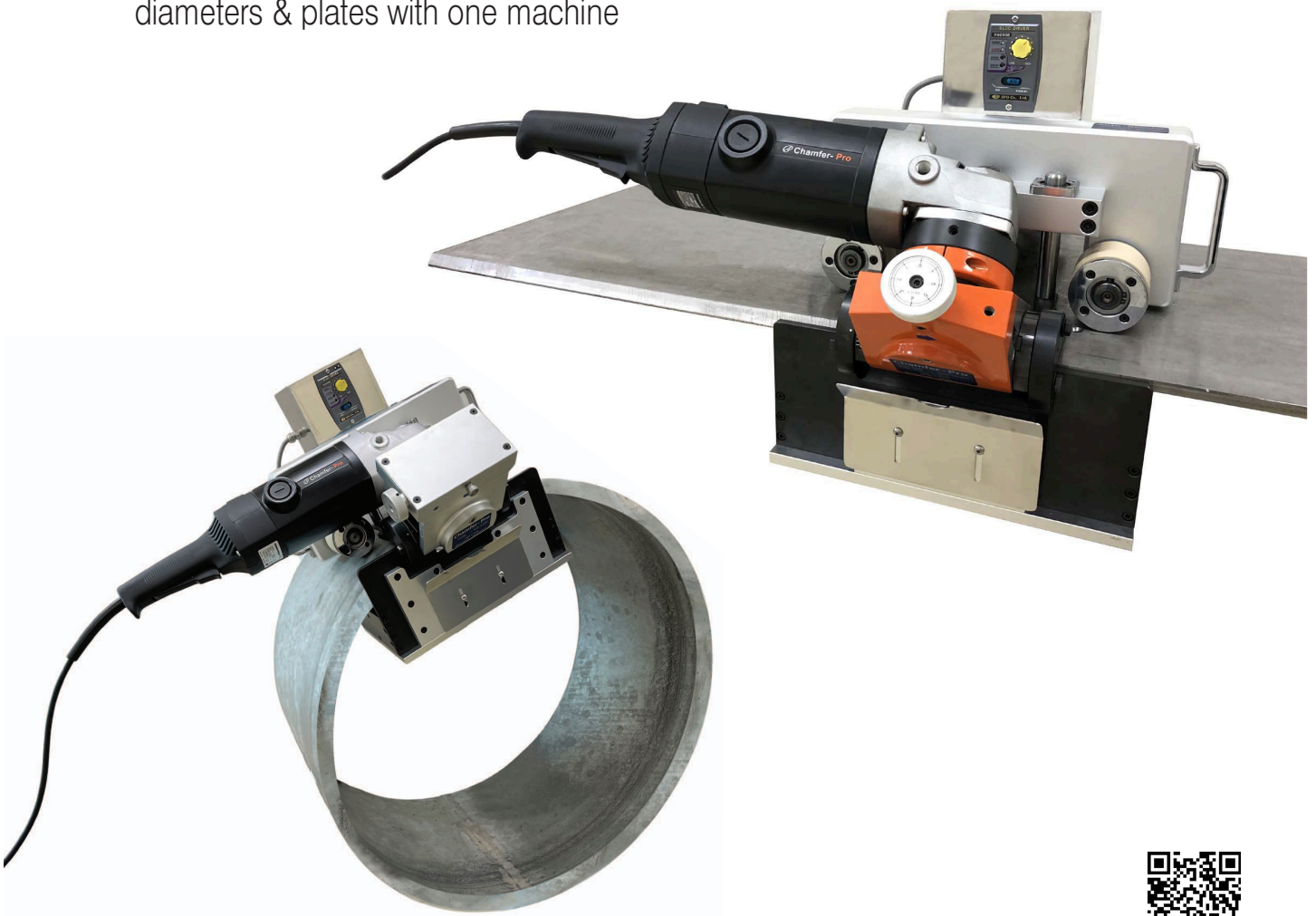


Portable Beveler



Automatic AP1020-00 Automatic AP1040-00 Pipe & Plate Beveling Machine

- Easy & fast set-up (Approx. 3minutes)
- Applicable to pipes with various diameters & plates with one machine



Video

Specifications	AP1020-00	AP1040-00
Work scope (Diameter)	More than 24"~ Plate	More than 24"~ Plate
Applicable thickness of workpiece	5~40t (different as per the diameter)	10~65t (different as per the diameter)
Maximum diagonal width of beveling	21 mm	42 mm
Maximum wall thickness of beveling (45°)	15 mm	30 mm
Adjustable beveling angle	0~45°	0~45°
Weight (kg)	13.5 + 17.7 + 9.7kg	15.5 + 17.7 + 11.0kg

Automatic AP1020-32 Pipe Beveling Machine

- Easy set-up & One-rotation completion
- Applicable to pipes with various diameters with one machine



Specifications	AP1020-32
Work scope (Diameter)	10" ~ 32"
Applicable thickness of workpiece	less than 20mm
Maximum diagonal width of beveling	21mm
Maximum wall thickness of beveling (45°)	15mm
Adjustable beveling angle	0~45°
Weight (kg)	8.2 + 17.7 + 9.7kg

EASY! EP1020-00

EASY! EP1040-00

Pipe & Plate Beveling Machine

- Easy & fast set-up (Approx. 3minutes)
- Applicable to pipes with various diameters & plates with one machine
- Convenient work with a spinning handle



Video

Specifications	EP1020-00	EP1040-00
Work scope (Diameter)	More than 24"~ Plate	More than 24"~ Plate
Applicable thickness of workpiece	5~40t (different as per the diameter)	10~65t (different as per the diameter)
Maximum diagonal width of beveling	21mm	42mm
Maximum wall thickness of beveling (45°)	15mm	30mm
Adjustable beveling angle	0~45°	0~45°
Weight (kg)	13.5 + 7.3 + 9.7kg	15.5 + 7.3 + 11.0kg

EASY! EP1020-32 Pipe Beveling Machine

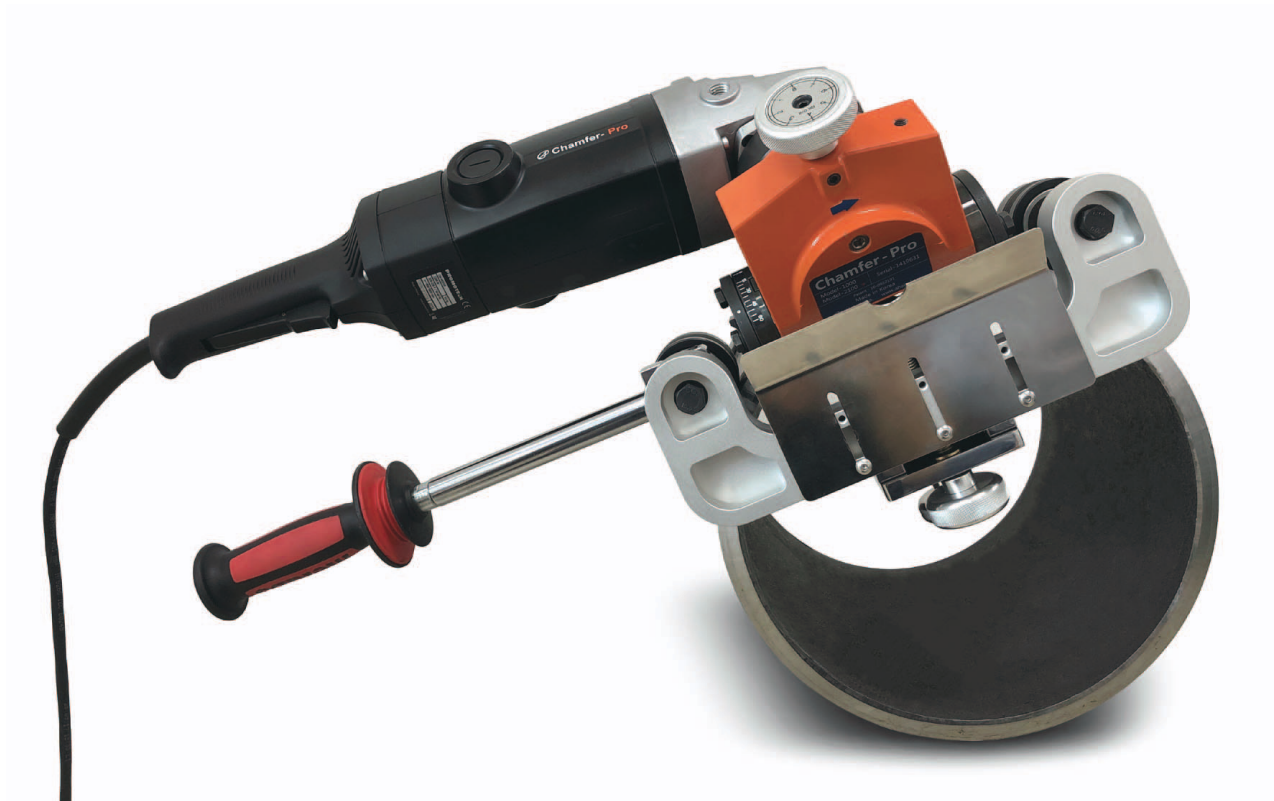
- Easy set-up & One-rotation completion
- Applicable to pipes with various diameters with one machine
- Convenient work with a spinning handle



Specifications	EP1020-32
Work scope (Diameter)	10" ~ 32"
Applicable thickness of workpiece	less than 20mm
Maximum diagonal width of beveling	21mm
Maximum wall thickness of beveling (45°)	15mm
Adjustable beveling angle	0~45°
Weight (kg)	8.2 + 7.3 + 9.7kg

Manual MP0020-26 Pipe Beveling Machine

- Easy set-up & One-rotation completion
- Applicable to pipes with various diameters with one machine



Video

Specifications	MP0020-26
Work scope (Diameter)	6" ~ 26"
Applicable thickness of workpiece	less than 20mm
Maximum diagonal width of beveling	21mm
Maximum wall thickness of beveling (45°)	15mm
Adjustable beveling angle	0~45°
Weight (kg)	8.4 + 9.7kg

Chamfer-Pro CP2100 Portable Beveler

- No vibration & smooth chamfered surface
- Easy adjustment of beveling depth & angle
- Improved cutter ensuing easy change of insert tips
- Built-in speed controller for a motor RPM
- Optimized in beveling various materials (Stainless steel, Carbon steel, etc)
- Compatible with devices for plate & pipe beveling
- One-pass completion



Optional Accessories



Roller Guide for pipe beveling with Chamfer-Pro



Roller Plate to reduce the friction force with workpiece



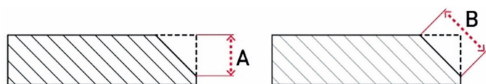
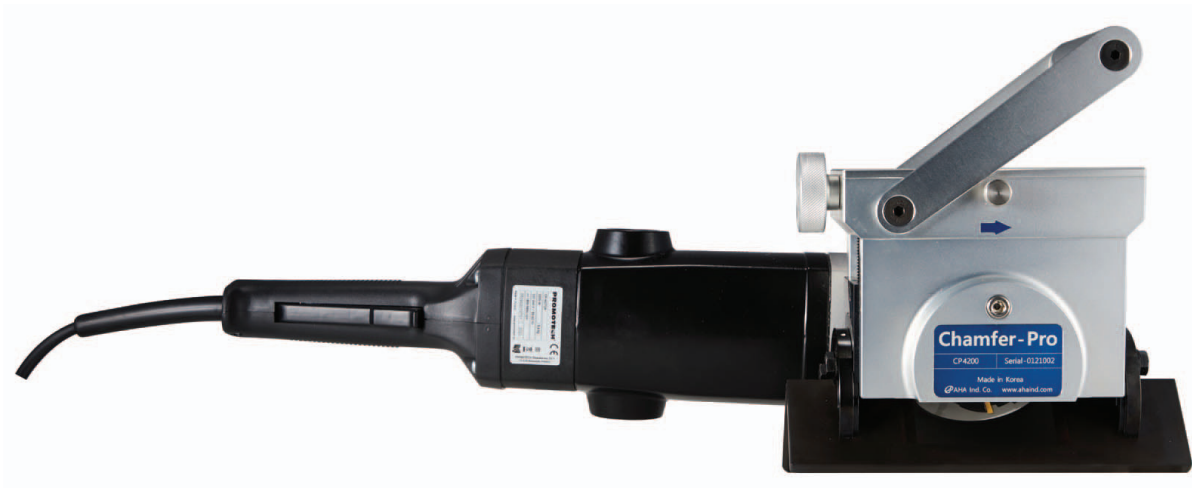
Roller Clamp for bottom-bevel & convenient plate beveling



Specifications	CP2100	CP1000
Maximum diagonal width of beveling (B)	21 mm	10 mm
Maximum wall thickness of beveling (45°, A)	15 mm	7 mm
Adjustable beveling angle	0 ~ 60°	0 ~ 60°
Number of insert tips	12	6
Weight (kg)	11.5kg	11.3kg
Motor (Single Phase)	220V (or 110V) 50~60Hz 2200W	

Chamfer-Pro 4200 Portable Beveler

- Easy to adjust RPM of motor with built-in dial controls depending on the materials
- Easy and simple to adjust beveling depth with one-touch control
- Fine adjustment of beveling depth (adjustable by 0.2mm per click)
- Convenient replacement of insert tips by improved cutter head structure
- Possible to adjust beveling angles (from 0° to 60°)
- Capable of beveling outside diameters of pipes (more than 6") with the optional Roller Guide or Pipe Beveling Devices.



Specifications	CP4200
Maximum diagonal width of beveling (B)	42 mm
Maximum wall thickness of beveling (45°, A)	30 mm
Adjustable beveling angle	0 ~ 60°
Number of insert tips	24 (4×6)
Weight (kg)	13.5kg
Motor (Single Phase)	220V (or 110V) 50~60Hz 2200W



**Masterpieces are created
by the best tools.**

 **AHA INDUSTRIAL CO.**

T. +82-10-4473-1022

F. +82-42-935-7602

E. aha.overseas@gmail.com

H. www.ahaind.com