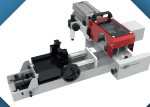


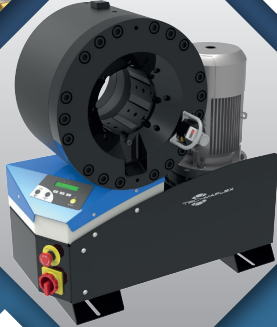
QUALITY



INDUSTRIAL
HYDRAULIC
RELIABILITY

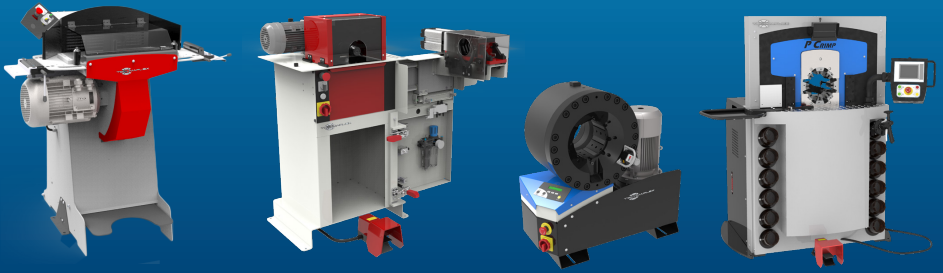


INTEGRATED SOLUTIONS



ASSEMBLY MACHINES





INTRODUCTION

From being founded in 1987, Techmaflex has become known for the quality and reliability of its benchtop equipment and crimping solutions. Today, Techmaflex is a leader in Europe on benchtop crimping and its supporting equipment range. Techmaflex has grown globally with an established equipment range for portable equipment, benchtop equipment, OEM level and Industrial hose applications. Techmaflex has worked closely with a hose and fitting manufacturer to ensure the equipment meets the toughest demands of the hose industry. This alliance has allowed Techmaflex to design machines perfectly suited for hose assemblers in all industries.

Now established with offices in North America, Asia, Russia, and manufacturing in Europe, Techmaflex has established a global network to support our customers with prompt service and support for all equipment.

Techmaflex continues to innovate in order to serve the expanding market with reliable, hard working equipment and unbeatable service. When you decide on your next line of equipment, look for the "Original Techmaflex" Stamp to ensure you have the best so you can make the best.

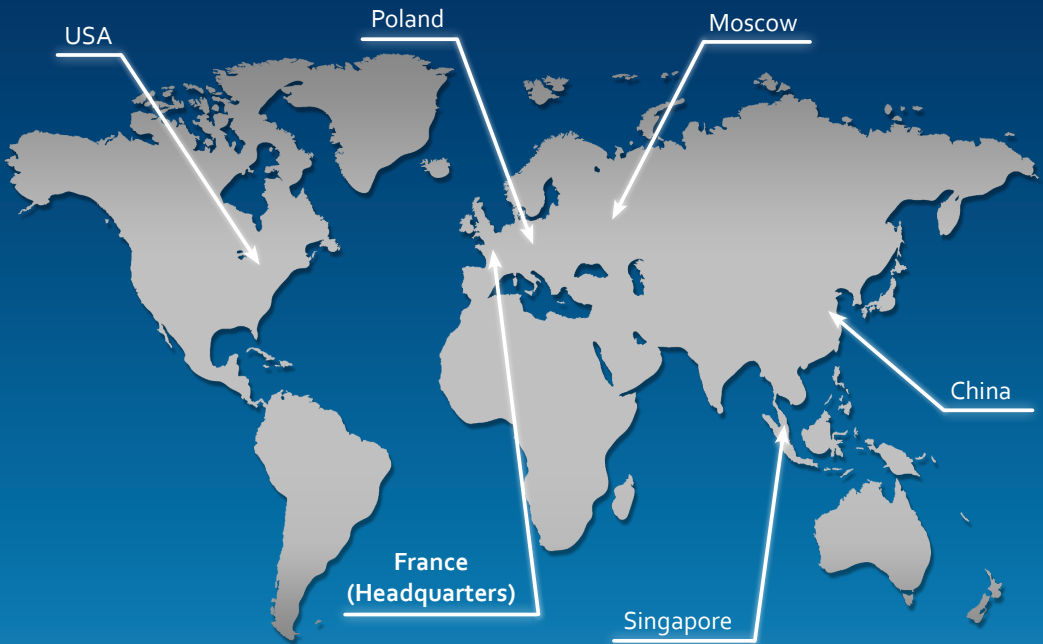
All of Techmaflex's assembly machines undergo a rigorous product development process and are subject to extensive testing in both laboratory and field environments.

The following index offers a guideline to aid selection of the proper machine with reference to the applications and performance requested.

Special machines (not included in this catalogue) are available upon request, as well as original spare parts.

CONTENTS

Cutting Machines.....	1
Skiving Machines.....	9
Insert Pushing Machines.....	14
Marking Machines.....	15
Complimentary Products.....	16
Crimping Machines.....	18
Test Benches.....	44
Industrial Machines.....	46



FIELD SERVICE & MOBILE WORKSHOP 12V/24V

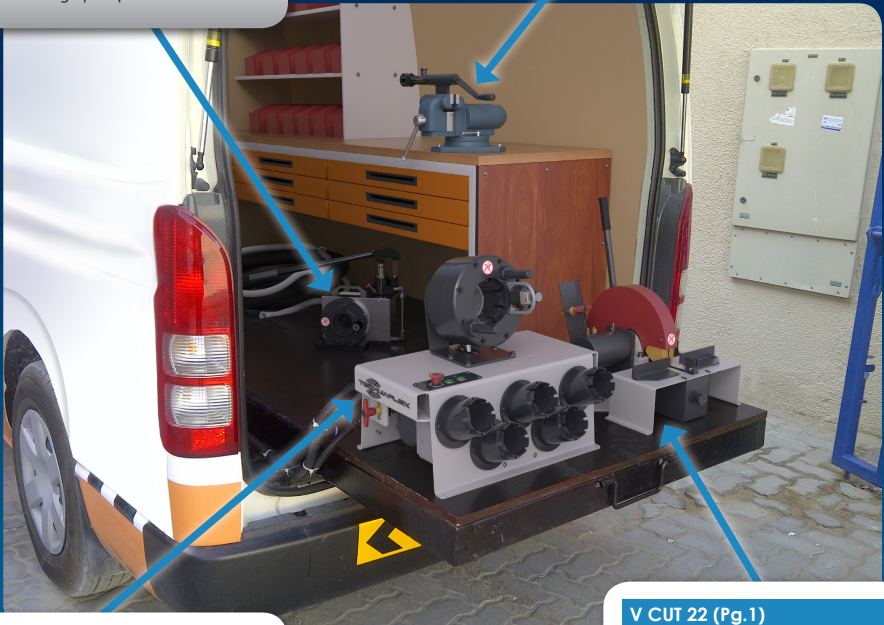
A compact and robust line up to 2", perfect for on-site repair. The hand crimper, H Crimp 80, offers accessibility to all sites. A complete 12V line delivers hose assembly quality equal to the one obtained in a workshop.

H CRIMP 80 (Pg.21)

- Capacity: 1" 2 WB
- Compact
- Lightweight
- Easy to use
- Balanced design
- Dual stage pump

H SKIVE (Pg.9)

- Capacity: 2"
- Economic
- Simple
- Compact
- Robust
- Plugin skive system



V CRIMP 137 (Pg.30)

- Capacity: 1 ¼" WS
- Robust and compact design
- Lightweight
- High crimping speed
- Suitable also for 90° elbow fittings
- Cylinder protection
- Remote head mounting option possible

V CUT 22 (Pg.1)

- Capacity: 1 ¼"
- Smooth bending system
- 90° cut
- Clean cut
- Scalloped blade
- Dust collector included
- Multiple voltage options

EXPERT SERVICE LINE

A result of our collaboration with OEM assemblers and hose manufacturers, our expert workshop combines power, reliability, speed, openness and comfort. Techmaflex is now the most innovative manufacturer in machines dedicated to OEM, providing (for instance) the Safe Crimp System which guarantees a constant control of hose assemblies.

P CUT 90 (Pg.7)

- Capacity: 3" 6WS
- Very powerful
- Heavy duty for difficult cuts
- Hydraulic bending
- Brake motor
- Electronic soft start

P SKIVE 205 (Pg.11)

- Capacity: 3"
- Plug'n skive system
- Large dust collector
- Robust & easily adjustable knife for quick and easy changeover
- Suitable for high volume production
- 2-way rotation



S PUSH 1500 (Pg.15)

- Capacity: a II hydraulic hoses from 3/4" up to 2" Interlock
- Compact
- Sturdy
- Powerful
- Hydro pneumatic power pack

P CRIMP 480 (Pg.37)

- Capacity: 6" WS
- High crimp force
- Large opening
- Safe Crimp System (SCS) control
- Wide family of dies for industrial hoses
- Long master dies
- Robust
- Low noise level
- Easy die set-up with ergonomic gun

XXL WORKSHOP

A workshop developed on a complete range of Industrial crimpers combining power, openness, ergonomics and solutions for handling large diameters. This workshop increases your potential of opportunities. It allows you to prospect many and various markets and thus amortize your investment quickly. Our knowledge of the activity constraints led us to offer ergonomic solutions adapted to the handling of large diameters.



XL CRIMP 800 (Pg.38)

- Capacity: 4" 4WS / 3" 6WS / 8" Industrial
- Designed for heavy duty large bore hydraulic hoses
- High power and speed
- Ergonomically designed for large bore hoses
- Safe Crimp System (SCS) for maximum reliability during the crimping process
- Large opening up to 8"
- Long master dies
- Very high crimping force

CRIMPING MACHINES EVO RANGE

PG. 21 - 27

Techmaflex is always on the lookout for ways to improve both the efficiency and the quality of new and existing production operations.

As a market leader in assembly machines, we wanted to offer new crimping machines to improve the operator's comfort, giving more flexibility when assembling hoses. This led to the creation of the new EVO crimping machines.

These machines combine the robustness required for harsh environments with the reliability needed for busy workshops. Their compact and ergonomic design, along with the ease of set up and maintenance, make them suitable for a variety of applications.

This extensive range is highly adaptable, with various options available allowing users to customise their machine according to their specific needs.



- Extensive range for both industrial and hydraulic hoses.

- 137, 240, 350 and 420 tonnes variants
- From 3/16 up to 4" hose diameter
- 4 kW or 5,5 kW motor for 3Ph



- SC panel - Smart Control panel.
Daily counter.
Semi-automatic opening.



Bluetooth connection

- SCE panel - electronic micrometer with the ability to save up to 25 configuration
- Caliper connected and numerical display of the crimping range on SCE
- SCS panel - Safe Crimp System



- Compact and ergonomic design
- Easy set up

- Various options available depending on our customers' needs and workshops



- Robust
- Ease of maintenance (foam pads dust collector)

- Compatibility with all tensions (different frequencies)

S CUT 22 / V CUT 22

STARTER WORKSHOP BENCHTOP



KEY FEATURES

- Smooth bending system
- 90° cut
- Clean cut
- Scalloped blade
- Dust collector included
- Multiple voltage options

STANDARD



Scalloped Blade

Dust Collector

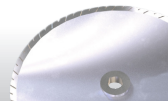
TECHNICAL SPECIFICATIONS

CAPACITY	DIMENSIONS
2wb: 1¼" max.	630 x 485 x 650 mm
4ws: 1¼" max.	(25 x 19 x 26")
ROTATION SPEED	PACKAGING
3000 rpm	800 x 600 x 830 mm
SCALLOPED BLADE DIAMETER	(31 x 24 x 33")
254 mm (10") included	NET WEIGHT
MAX HOSE OD.	42 kg (93 lb)
50 mm (1.969")	GROSS WEIGHT
MOTOR	42 kg (93 lb)
2.2 kW	TECHNICAL FEATURES
VOLTAGES	Dimensions van type machine:
220/240 V, 3Ph, 50 Hz	488 x 630 x 650 mm
380/415 V, 3Ph, 50 Hz	(19.2 x 24.8 x 25.6");
208/240 V, 3Ph, 60 Hz	38 kg (84 lb)
380/415 V, 3Ph, 60 Hz	
12/24 V also available upon request	

OPTIONAL



Battery & Charger



Slotted Blade

S CUT 30 E

STARTER & PROFESSIONAL WORKSHOP
BENCHTOP CUTTING MACHINE, OPTIONAL SKIVING

CUTTING
MACHINES
2



KEY FEATURES

- Compact design
- Easy and safe to use
- Versatile, scalloped blade for high performance and efficient cutting with minimal smoke
- Electronic brake
- Skiving module can be ordered as optional and integrated on this machine

STANDARD



Scalloped Blade



Dust Collector

TECHNICAL SPECIFICATIONS

CAPACITY	VOLTAGES
2wb: 2" max.	220/240 V, 3Ph, 50 Hz
4ws: 2" max.	380/415 V, 3Ph, 50 Hz
6ws: 1¾" max.	208/240 V, 3Ph, 60 Hz
Industrial: 2" max.	380/415 V, 3Ph, 60 Hz
ROTATION SPEED	DIMENSIONS
3000 rpm	835 x 545 x 640 mm
SCALLOPED BLADE DIAMETER	(33 x 21 x 25")
300 mm (11.8")	PACKAGING
MAX HOSE OD.	1170 x 770 x 1100 mm
85 mm (3.346")	(46 x 30 x 43")
MOTOR	NET WEIGHT
2.2 kW	75 kg (165 lb)
	GROSS WEIGHT
	90 kg (198 lb)

OPTIONAL



Cutting Rail

S CUT 30 L

STARTER & PROFESSIONAL WORKSHOP STAND TYPE CUTTING MACHINE



KEY FEATURES

- Compact design
- Easy and safe to use
- Scalloped blade for clean cut
- High performance, efficient cutting with minimal smoke
- Ergonomic, easy to clean
- Integrated dust collector

STANDARD



Smoke Suction Connector



2 Dust Collectors



Scalloped Blade

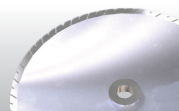
TECHNICAL SPECIFICATIONS

CAPACITY	VOLTAGES
2wb: 2" max.	220/240 V, 3Ph, 50 Hz
4ws: 2" max.	380/415 V, 3Ph, 50 Hz
6ws: 1¾" max.	208/240 V, 3Ph, 60 Hz
Industrial: 2"	380/415 V, 3Ph, 60 Hz
ROTATION SPEED	DIMENSIONS
3000 rpm	765 x 500 x 1150 mm
SCALLOPED BLADE DIAMETER	(30 x 20 x 45")
254 mm (10")	PACKAGING
MAX HOSE OD.	800 x 600 x 1200 mm
85 mm (3.34")	(32 x 24 x 47")
MOTOR	NET WEIGHT
3.0 kW	92 kg (203 lb)
	GROSS WEIGHT
	120 kg (265 lb)

OPTIONAL



Cutting rail



Slotted blade

S DUO 30

STARTER & PROFESSIONAL WORKSHOP
BENCHTOP, INTEGRATED CUTTING & SKIVING

CUTTING
MACHINES
4



KEY FEATURES

- Compact design
- Two operations in one machine
- Easy and safe to use
- Versatile, scalloped blade for high performance and efficient cutting with minimal smoke
- Dust free skive operation (drawers for dust collection)
- Electronic brake

STANDARD



Scalloped Blade



2 Dust Collectors

TECHNICAL SPECIFICATIONS

CAPACITY

- 2wb: 2" max.
- 4ws: 2" max.
- 6ws: 1 3/4" max.
- Industrial: 2" max.

VOLTAGES

- 220/240 V, 3Ph, 50 Hz
- 380/415 V, 3Ph, 50 Hz
- 208/240 V, 3Ph, 60 Hz
- 380/415 V, 3Ph, 60 Hz

ROTATION SPEED (CUT)

3000 rpm

DIMENSIONS

835 x 545 x 640 mm
(33 x 21 x 25")

ROTATION SPEED (SKIVE)

200 rpm

PACKAGING

1170 x 770 x 1100 mm
46 x 30 x 43"

SCALLOPED BLADE DIAMETER

300 mm (11.8")

MAX HOSE OD.

85 mm (3.34")

NET WEIGHT

85 kg (187 lb)

MOTOR

2.2 kW

GROSS WEIGHT

100 kg (220 lb)

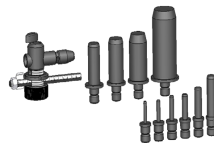
TECHNICAL FEATURES

Skiving tools for External Skiving (ESE) and for Internal Skiving (IS) to be ordered separately

OPTIONAL



Cutting Rail



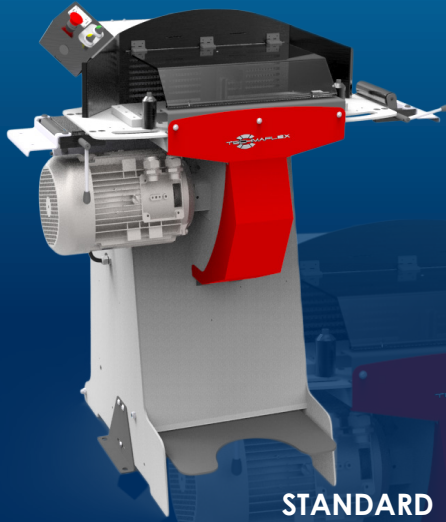
Tool Kit ESE



Tool Kit IS

S CUT 55/P

FULL SERVICE WORKSHOP, STARTER PRODUCTION UNITS
STAND TYPE CUTTING MACHINE



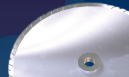
KEY FEATURES

- Versatile, slotted blade for high performance smoke free cutting
- Ergonomic and functional design
- Double foot pedal system
- Safety cover and feeding guides for hose (easy and fast cutting operation)
- Digital counter for maintenance assistance
- Adjustable speed for cutting on pneumatic version

STANDARD



Control Panel



Slotted Blade



Feeding Guide



Dust Collector

TECHNICAL SPECIFICATIONS

CAPACITY

- 2wb: 2" max.
- 4ws: 2" max.
- 6ws: 2" max.
- Industrial: 2"

ROTATION SPEED

3000 rpm

SLOTTED BLADE DIAMETER

400 mm (15.7")

MAX HOSE OD.

80 mm (3.15")

MOTOR

7.5 kW

VOLTAGES

- 220/240 V, 3Ph, 50 Hz
- 380/415 V, 3Ph, 50 Hz
- 208/240 V, 3Ph, 60 Hz
- 380/415 V, 3Ph, 60 Hz

DIMENSIONS

1140 x 1000 x 1280 mm
(45 x 39 x 50")

PACKAGING

1600 x 1200 x 1600 mm
(63 x 47 x 63")

NET WEIGHT

240 kg (529 lb)

GROSS WEIGHT

280 kg (617 lb)

TECHNICAL FEATURES

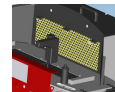
Diameter of the suction connection: 150 mm (6")

Options: Pneumatic bending system, scalloped blade

OPTIONAL



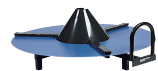
Cutting Rail



Smoke Suction



DVC



DV 32



Decoiler



Smoke Extractor

S CUT 75/P

EXPERT SERVICE LINE
STAND TYPE CUTTING MACHINE

CUTTING
MACHINES
6



Pneumatic Version



Manual Version



Slotted Blade

KEY FEATURES

- Very powerful
- Heavy duty for difficult cuts
- Resistant for extreme cuts
- New design:
 - Easy maintenance
 - Efficiency for smoke extraction
- Motor brake (Option)
- Pneumatic option
- Option for industrial hose:
 - Blade 540mm for hoses with External OD max 150mm

STANDARD

OPTIONAL

TECHNICAL SPECIFICATIONS

CAPACITY

- 2wb: 3" max.
- 4ws: 2" max.
- 6ws: 2" max. manual version

ROTATION SPEED

3000 rpm

SLOTTED BLADE DIAMETER

520 mm (20.5") included

MAX HOSE OD.

125 mm (5")*

MOTOR

7,5 kW

VOLTAGES

- 220/240 V, 3Ph, 50 Hz
- 380/415 V, 3Ph, 50 Hz
- 208/240 V, 3Ph, 60 Hz
- 380/415 V, 3Ph, 60 Hz

DIMENSIONS

910 x 820 x 1280 mm
(36 x 32 x 50")

NET WEIGHT

215 kg (474 lb)

TECHNICAL FEATURES

Diameter of suction connection: 130 mm
Electronic soft start.

Optional tools:

- Motor Brake
- Pneumatic Version
- Other Blade on demand

*150mm with blade option 540mm



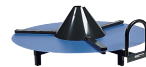
Cutting Rail



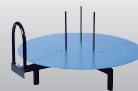
Decoiler



Smoke Extractor



DVC



DV 32

P CUT 90

EXPERT SERVICE LINE
STAND TYPE CUTTING MACHINE



KEY FEATURES

- Very powerful
- Heavy duty for difficult cuts
- Hydraulic bending
- Brake motor
- Electronic soft start
- Smoke suction integrated in cutting table

STANDARD



Slotted Blade



Production Counters



Smoke Suction Connector



CME Electrical Foot Switch

TECHNICAL SPECIFICATIONS

CAPACITY

- 2wb: 3½" max.
- 4ws: 3½" max.
- 6ws: 3" max.

ROTATION SPEED

3000 rpm

SLOTTED BLADE DIAMETER

520 mm (20.5") included

MAX HOSE OD.

125 mm (5")

MOTOR

9.0 kW

TECHNICAL FEATURES

Diameter of suction connection: 110 mm (4.33")
Standard tool: Hydraulic bending, brake motor

VOLTAGES

- 220/240 V, 3Ph, 50 Hz
- 380/415 V, 3Ph, 50 Hz
- 208/240 V, 3Ph, 60 Hz
- 380/415 V, 3Ph, 60 Hz

DIMENSIONS

1000 x 1060 x 1350 mm
(39 x 42 x 53")

NET WEIGHT

260 kg (573 lb)

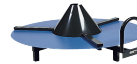
OPTIONAL



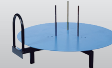
Cutting Rail



Decoiler



DVC



DV 32



Smoke Extractor

SMOKE EXTRACTOR 1200

PROFESSIONAL WORKSHOP



KEY FEATURES

- High flow power
- Stable working pressure
- 4 wheels on machine for easy installation
- Filtering surface: 9 m²
- Filtration efficiency: 99,5 (corresponding to the H12 class)
- Respect of the Norm EN1822
- HEPA filter (High Efficiency Particle Arrester)
- Metallic pre-filter: G2 class
- Acrylic pre-filter: G4 class

TECHNICAL SPECIFICATIONS

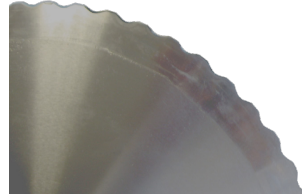
WORKING FLOW	NOISE LEVEL
1200m ³ /H	<75 dB A
WORKING PRESSURE	MOTOR
630 Pa	1.1 kW
MOTOR FAN FLOW	VOLTAGES
2500 m ³ /H	220/240 V, 1Ph, 50Hz
MOTOR FAN PRESSURE	
1400 Pa	
IP CLASS	DIMENSIONS
55	1210 x 720 x 830 mm
FILTER SIZE	
287X592	
NUMBER OF FILTER	NET WEIGHT
4	55 kg

ACCESSORIES AND TOOLS

CUTTING DISCS

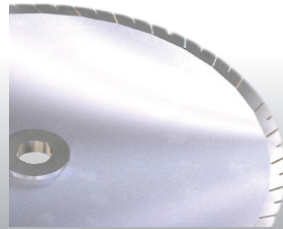
SCALLOPED BLADE TYPE

The scalloped blade is suitable for all hose types. It is able to reach a high quality of cutting surface and is the standard on 254 and 300 mm blades.



SLOTTED BLADE TYPE

The slotted blade is recommended for cutting standard and heavy duty hoses. It is ideal for continuous service, as the blade profile has been optimised to maintain a low temperature on the cutting edge. This blade provides an extended operational life of up to 2 times that of the previous blade, and is the standard on 400 and 520 mm blades. It is optional on diameter 254 mm.



BRAKE MOTOR

The brake motor is a device which stops the disc immediately when the stop button is pushed.

PNEUMATIC BENDING

Available on S CUT 55 and S CUT 75.

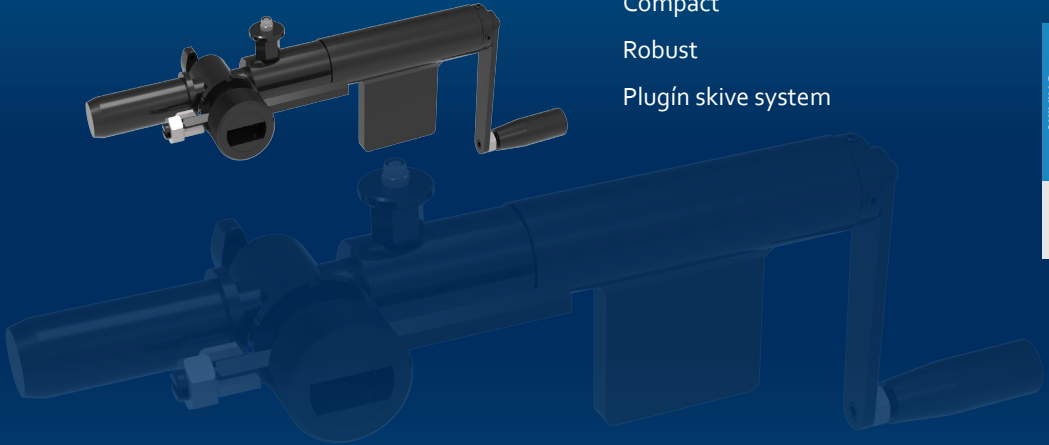
Pneumatic bending facilitates cutting, as the operator does not have to force the hose on the blade. The pneumatic system, activated by a foot switch, offers hands free operation. This is the same principle for the hydraulic bending on P CUT 90.

H SKIVE

FIELD SERVICE & MOBILE WORKSHOP
MANUAL, PORTABLE SKIVING TOOL

KEY FEATURES

- Portable, lightweight
- Economic
- Simple
- Compact
- Robust
- Plug-in skive system



TECHNICAL SPECIFICATIONS

CAPACITY

2wb: 2" max.

4ws: 2" max.

DIMENSIONS

413 x 52 x 224 mm
(16 x 2 x 9")

NET WEIGHT

3 kg (7 lb)

TECHNICAL FEATURES

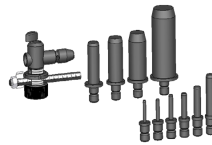
Tool selection:

- External Skiving Kit (ESE)
including 10 mandrels
(6-8-10-13-16-19-25-32-38-50)

- Internal Skiving Kit (IS)
including 7 mandrels (13-16-19-25-32-38-50)

Internal skiving tools can also be ordered per diameter

OPTIONAL



Tool Kit ESE



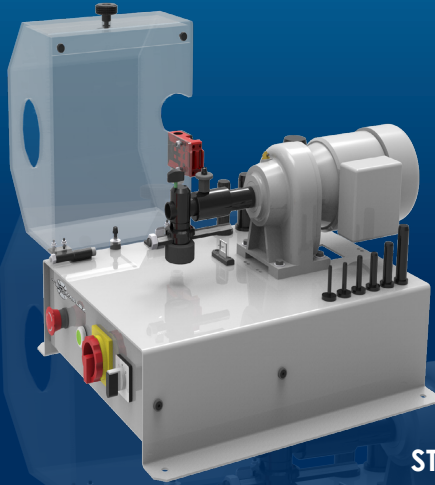
Tool Kit IS

S SKIVE 100

SMALL SERVICE WORKSHOP
BENCHTOP SKIVING

KEY FEATURES

- Plug'n skive system
- Compact & stable
- Safety switch on the cover
- Good visibility
- Tool storage included
- Foot pedal drive with emergency stop
- 2-way rotation



STANDARD



CME Electrical Foot Switch

TECHNICAL SPECIFICATIONS

CAPACITY

2wb: 2" max.

4ws: 2" max.

ROTATION SPEED

100 rpm

MOTOR

0.25 kW

VOLTAGES

220/240 V, 1Ph, 50 Hz

380/415 V, 3Ph, 50 Hz

220/240 V, 1Ph, 60 Hz

380/415 V, 3Ph, 60 Hz

DIMENSIONS

500 x 660 x 360 mm

(19 x 26 x 14")

PACKAGING

800 x 600 x 700 mm

(31 x 24 x 28")

NET WEIGHT

45 kg (99 lb)

GROSS WEIGHT

55 kg (121 lb)

TECHNICAL FEATURES

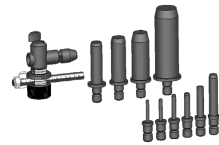
Tools available (to be ordered separately)

ESE, IS, ESP₁, ESP₂

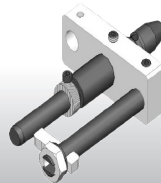
OPTIONAL



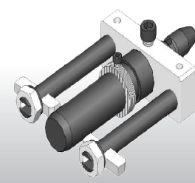
Tool Kit IS



Tool Kit ESE



Tool Kit ESP 1



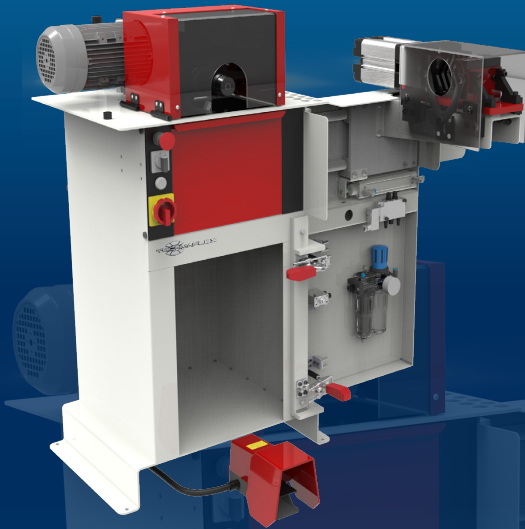
Tool Kit ESP 2

P SKIVE 205

STARTER & PROFESSIONAL WORKSHOP STAND TYPE CUTTING MACHINE

KEY FEATURES

- Plug'n skive system
- Large dust collector
- Robust & easily adjustable knife for quick and easy changeover
- Suitable for high volume production
- 2-way rotation



Model shown: OEM version with Pneumatic Clamping system option

TECHNICAL SPECIFICATIONS

CAPACITY

- 2wb: 2" max.
- 4ws: 2" max.
- 6ws: 3" max.

ROTATION SPEED

205 rpm

MOTOR

0.9 kW

VOLTAGES

- 220/240 V, 3Ph, 50 Hz
- 380/415 V, 3Ph, 50 Hz
- 208/240 V, 3Ph, 60 Hz
- 380/415 V, 3Ph, 60 Hz

DIMENSIONS

675 x 550 x 1130 mm
(27 x 22 x 44")

PACKAGING

800 x 600 x 1200 mm
(32 x 24 x 47")

100 kg (220 lb)

GROSS WEIGHT

160 kg (353 lb)

TECHNICAL FEATURES

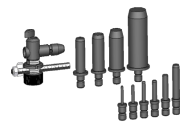
Options available: speed regulator, hose clamping system (limited to distribution workshop using sizes under 2")

Tools available (to be ordered separately):
ESA, IS, ESP1, ESP2

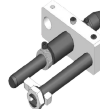
OPTIONAL



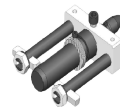
Tool Kit IS



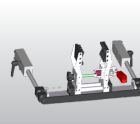
Tool Kit ESA



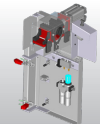
Tool Kit ESP 1



Tool Kit ESP 2



Manual Hose Clamping System



Pneumatic Hose Clamping System



Speed Regulator

ACCESSORIES AND TOOLS

EXTERNAL SKIVING TOOLS

Depending on the machine and on customer needs, Techmaflex offers 3 types of external skiving tools:

ESE (EXTERNAL SKIVING ECONOMIC)

For H Skive, S SKive 100 and S Duo 30

The ESE kit includes 10 mandrels: $\frac{1}{4}$ " , $\frac{5}{16}$ " , $\frac{3}{8}$ " , $\frac{1}{2}$ " , $\frac{5}{8}$ " , $\frac{3}{4}$ " , 1" , $1\frac{1}{4}$ " , $1\frac{1}{2}$ " , 2"

ESA (EXTERNAL SKIVING ADJUSTABLE)

For P Skive 205

The ESA kit includes 11 mandrels: $\frac{3}{16}$ " , $\frac{1}{4}$ " , $\frac{5}{16}$ " , $\frac{3}{8}$ " , $\frac{1}{2}$ " , $\frac{5}{8}$ " , $\frac{3}{4}$ " , 1" , $1\frac{1}{4}$ " , $1\frac{1}{2}$ " , 2"

ESA mandrels are also available in $2\frac{1}{2}$ " and 3"

ESP (EXTERNAL SKIVING PRODUCTION)

For S Skive 100 and P Skive 205

ESP tools are individual 'skiving heads' intended to be pre-set to the right depth and length for greater productivity. They are recommended for batch skiving operations and a second knife can be added for abrasion resistant covers.

ESP is available in: $\frac{3}{16}$ " , $\frac{1}{4}$ " , $\frac{5}{16}$ " , $\frac{3}{8}$ " , $\frac{1}{2}$ " , $\frac{5}{8}$ " , $\frac{3}{4}$ " , 1" , $1\frac{1}{4}$ " , $1\frac{1}{2}$ " , 2" , $2\frac{1}{2}$ " and 3"

INTERNAL SKIVING TOOLS

IS (INTERNAL SKIVING)

For all machines

The IS kit includes 7 mandrels: $\frac{1}{2}$ " , $\frac{5}{8}$ " , $\frac{3}{4}$ " , 1" , $1\frac{1}{4}$ " , $1\frac{1}{2}$ " , 2"

They are also available in $\frac{5}{8}$ " , $2\frac{1}{2}$ " and 3"

The ring is heat treated to resist the abrasion of the hose wires.

Optional venturi system with IS tool.

ACCESSORIES AND TOOLS

HOSE CLAMPING SYSTEM

Recommended for skiving hoses over 2" (DN 50)

PLUG N'SKIVE SYSTEM

All Techmaflex skiving machines are equipped with the Plug'n Skive System which allows the quick and easy insertion of tools.

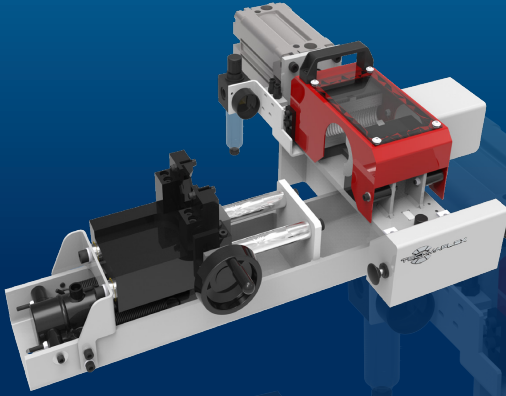
With the Plug n'Skive System no tools are needed to insert the skiving mandrel, simply push the mandrel into the locking system to unlock it, lift a knob and pull out the tool.

S PUSH 1500

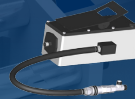
EXPERT SERVICE LINE
BENCHTOP COUPLING INSERTER

KEY FEATURES

- Compact
- Sturdy
- Powerful



STANDARD



Hydro-pneumatic Pump

TECHNICAL SPECIFICATIONS

CAPACITY

- 2wb: 2" max.
- 4ws: 2" max.
- 6ws: 2" max.

DIMENSIONS

750 x 660 x 300 mm
(30 x 26 x 12")

NET WEIGHT

70 kg (154 lb)

POWER SUPPLY

Compressed air (7 bar)

TECHNICAL FEATURES

Optional tool: for small bore 1/4", 3/8", 1/2" shell

S PUSH 2000

EXPERT SERVICE LINE
BENCHTOP COUPLING INSERTER

KEY FEATURES

- Compact
- Sturdy
- Powerful hydraulic cylinder
- Insert centring device
- Joystick operated clamping and insertion



TECHNICAL SPECIFICATIONS

CAPACITY

38 mm min
170 mm OD Hose

DIMENSIONS

800 x 500 x 900 mm
(31 x 20 x 35")

INSERTION SPEED*

28 mm/s

VOLTAGES

380/415 V, 3Ph, 50 Hz

INSERTION STROKE

300 mm

MAXIMUM FLANGE

250 mm

INSERTION FORCE

2,000 N

POWER*

1.5 kW

CLAMPING LENGTH

200 mm

NET WEIGHT

150 kg (330 lb)

*Electrical version only

OPTIONAL



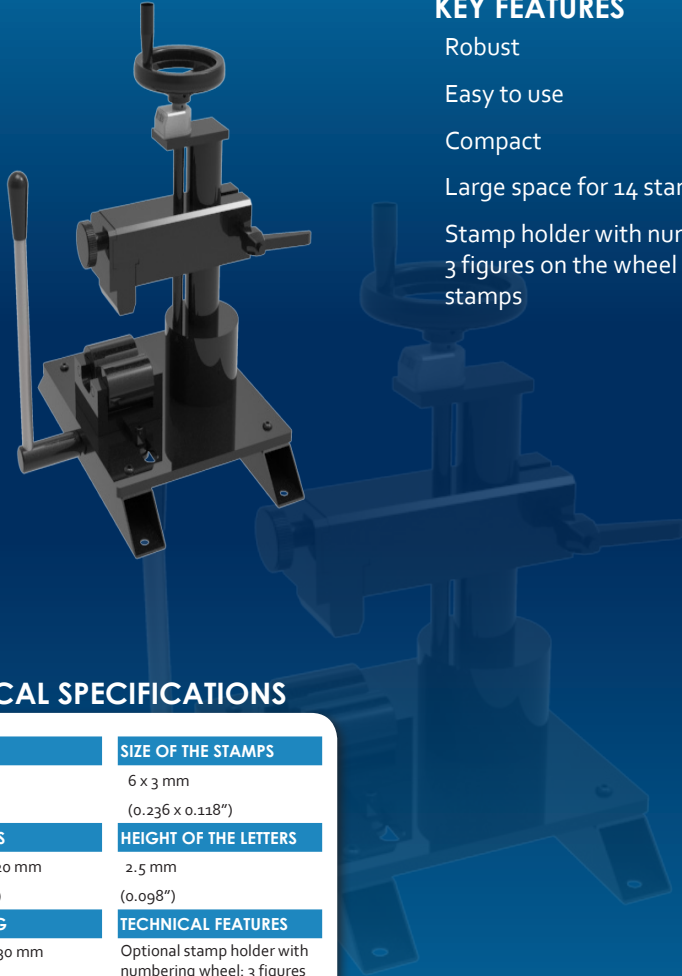
Hydraulic manual version

S MARK 50

AFTER MARKET SERVICE
BENCHTOP, FERRULE MARKING

KEY FEATURES

- Robust
- Easy to use
- Compact
- Large space for 14 stamps
- Stamp holder with numbering wheel; 3 figures on the wheel + 1 groove for stamps



TECHNICAL SPECIFICATIONS

CAPACITY	SIZE OF THE STAMPS
2wb: 4" max.	6 x 3 mm
4ws: 4" max.	(0.236 x 0.118")
DIMENSIONS	HEIGHT OF THE LETTERS
390 x 360 x 520 mm (15 x 14 x 20")	2.5 mm (0.098")
PACKAGING	TECHNICAL FEATURES
800 x 600 x 830 mm (31 x 24 x 33")	Optional stamp holder with numbering wheel: 3 figures on the wheel and one groove for 10 stamps
NET WEIGHT	STAMP BOX
34 kg (75 lb)	Includes stamp box of 100 stamps & 20 blanks
GROSS WEIGHT	
50 kg (110 lb)	
STANDARD STAMP HOLDER	
2 x 14 stamps	

S CLEAN 50

CK 50



TECHNICAL SPECIFICATIONS

NUMBER OF NOZZLES

10 to suit hose ID

COMPRESSED AIR

7 bar

MINIMUM INTERNAL DIAMETER OF HOSE

6 mm

MAXIMUM INTERNAL DIAMETER

51 mm

TECHNICAL FEATURES

Includes 575 pellets & projectile catcher

HRD 07

HOSES CAN BE STORED ON THE HOSE DISPENSER



TECHNICAL SPECIFICATIONS

MAXIMUM NUMBER OF COILS 7

MAXIMUM WEIGHT/COIL

80 kg

MINIMUM INTERNAL DIAMETER

300 mm

MAXIMUM EXTERNAL DIAMETER

850 mm

MAXIMUM HEIGHT

200 mm

DIMENSIONS

1180 x 1180 x 2115 mm (100 kg)

PACKAGING

1200 x 1200 x 720 mm (135 kg)

DV 32 - DVC - OEM DECOILER

DV 32



DVC



OEM



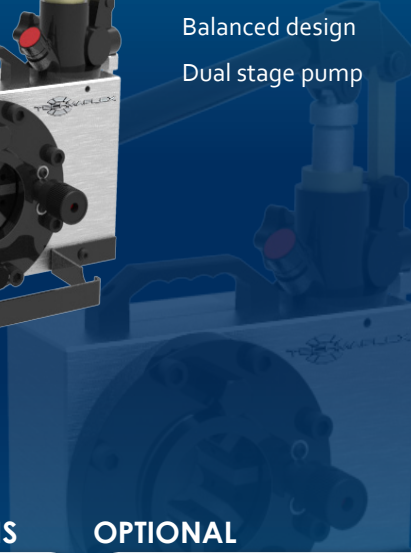
The hose decoiler is highly adaptable, suitable for a hose reel or a coil up to 100 kgs. It is stable and equipped with a hose guide system and a manual break, offering increased safety and efficiency.

H CRIMP 80

FIELD SERVICE & MOBILE WORKSHOP
HAND PUMP, PORTABLE

KEY FEATURES

- Compact
- Lightweight
- Easy to use
- Balanced design
- Dual stage pump



TECHNICAL SPECIFICATIONS

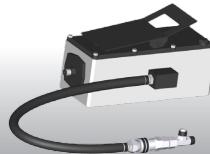
CAPACITY*	DIMENSIONS
2wb: 1" max.	330 x 250 x 400 mm
4ws: 1/2" max.	(13 x 10 x 16")
CRIMP RANGE	PACKAGING
6 - 43 mm (0.236 - 1.693")	800 x 600 x 830 mm
CRIMP FORCE	(31 x 24 x 33")
80 t	NET WEIGHT
OPENING WITH DIES	28 kg (62 lb)
+20 mm (+0.787")	GROSS WEIGHT
COMPLETE OPENING	41 kg (90 lb)
59 mm (2.323")	TECHNICAL FEATURES
MASTER DIE LENGTH	Hand pump: 5000 psi
56 mm (2.205")	(double speed)
STANDARD DIES	
15, 18, 21, 24, 27, 30, 39**	

*Indicative capacities depending on hose and fitting type
** Master-die is used as die set N°39

OPTIONAL



Maintenance Kits



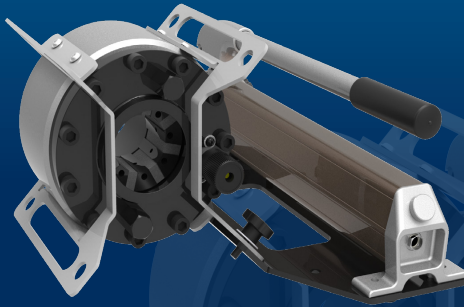
Hydro-pneumatic
Pump

H CRIMP 110

FIELD SERVICE & MOBILE WORKSHOP
HAND PUMP, PORTABLE

KEY FEATURES

- Flexible
- Portable
- Robust (protected narrow head)
- Multi-positioning (with removable plate)



TECHNICAL SPECIFICATIONS

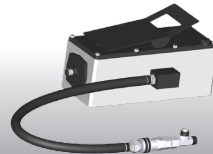
CAPACITY*	STANDARD DIES
2wb: 1" max.	15, 18, 21, 24, 27, 30
4ws: 1" max.	DIMENSIONS
CRIMP RANGE	220 x 222 x 240 mm
6 - 43 mm (0.236 - 1.693")	(7 x 9 x 10")
CRIMP FORCE	PACKAGING
110 t	800 x 600 x 830 mm
OPENING WITH DIES	(31 x 24 x 33")
+20 mm (+0.787")	NET WEIGHT
COMPLETE OPENING	28 kg (62 lb)
59 mm (2.323")	WEIGHT (HEAD ONLY)
MASTER DIE LENGTH	21 kg (46 lbs)
60 mm (2.362")	

*Indicative capacities depending on hose and fitting type

OPTIONAL



Maintenance Kits



Hydro-pneumatic Pump

H CRIMP 137

FIELD SERVICE & MOBILE WORKSHOP
HAND PUMP, PORTABLE

KEY FEATURES

- High capacity
- Narrow head
- Audio-visual signal
- 350 bar technology more robust & reliable than 700 bar
- Large opening



20

CRIMPING MACHINES

TECHNICAL SPECIFICATIONS

CAPACITY*

2wb/4ws: 1" 3/4 max.
Industrial: 1" 1/2 max.

CRIMP RANGE

4 - 70 mm (0.157 - 2.756")

CRIMP FORCE

137 t

OPENING WITH DIES

+28 mm (+1.102")

COMPLETE OPENING

100 mm (3.937")

MASTER DIE LENGTH

75 mm (2.362")

STANDARD DIES

15, 18, 21, 24, 27, 30, 33, 36, 39, 42, 45, 48, 51 and Refrifest dies 14, 18, 21

DIMENSIONS

480 x 250 x 340 mm
(19 x 10 x 13")

PACKAGING

800 x 600 x 830 mm

NET WEIGHT

55 kg (121 lb)

GROSS WEIGHT

75 kg (165 lb)

*Indicative capacities depending on hose and fitting type

OPTIONAL



Maintenance Kit



Quick Change Gun



Aluminium Quick Change Gun



Die Storage Panel



Hydro-pneumatic Pump



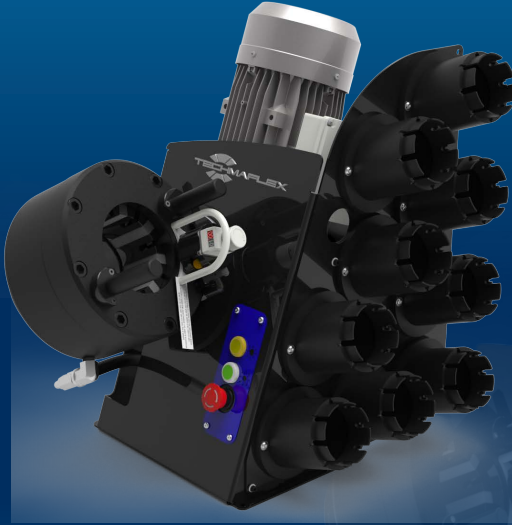
Marking Dies



Die Sets for Brake & Air Conditioning Hoses

S CRIMP 137 EVO R

MAINTENANCE WORKSHOP VERTICAL BENCHTOP



KEY FEATURES

- Ergonomically positioned adjustable head
- Axis of the head situated perpendicular to the operator
- Compact
- Optional quick change tool for dies
- Range of standard dies available

TECHNICAL SPECIFICATIONS

CAPACITY*	MOTOR
2wb/4ws: 1" ¼ max. Industrial: 1" 1/2 max.	1.5 kW (110V) 2.2 kW (230V)
CRIMP RANGE	VOLTAGES
4 - 70 mm (0.157 - 2.756")	110 V, 1Ph, 60 Hz 220/240 V, 1 Ph, 50 Hz 380/415V, 3 Ph + N, 50 Hz +12/24
CRIMP FORCE	DIMENSIONS
137 t	360 x 530 x 620 mm (14 x 21 x 25")
OPENING WITH DIES	NET WEIGHT
+28 mm (+1.102")	85 kg (196 lb)
COMPLETE OPENING	GROSS WEIGHT
100 mm (3.937")	89 kg (187 lb)
MASTER DIE LENGTH	
75 mm (2.953")	
STANDARD DIES	
15, 18, 21, 24, 27, 30, 33, 36, 39, 42, 45, 48, 51	
NOISE LEVEL	
70 dB A	

*Indicative capacities depending on hose and fitting type

OPTIONAL



Maintenance Kit



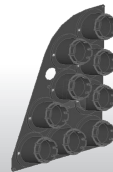
Die Storage Panel



Die Storage Table



Quick Change Gun



Aluminium Quick Change Gun

Die Storage Panel EVO R

S CRIMP 137 EVO

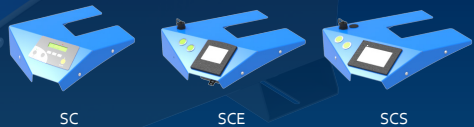
ASSEMBLING FOR FIELD REPAIR BENCHTOP CRIMP MACHINE



KEY FEATURES

- Crimp force of up to 137 tonnes for hoses up to 1 1/4"
- Easy to use and robust
- Extensive range of dies to suit crimping of hydraulic hoses
- Easy to set up and maintain
- Fast and reliable
- Digital micrometer
- Model shown equipped with SC control panel

CONTROL OPTIONS AVAILABLE ON REQUEST



TECHNICAL SPECIFICATIONS

CAPACITY*	NOISE LEVEL
2wb/4ws: 1" 1/4 max. Industrial: 1" 1/2 max.	70 dB A
CRIMP RANGE	MOTOR
4 - 70 mm (0.157 - 2.756")	4.0 kW
CRIMP FORCE	VOLTAGES
137 t	220/240 V, 3Ph, 50 Hz 380/415 V, 3Ph, 50 Hz 208/240 V, 3Ph, 60 Hz 380/415 V, 3Ph, 60 Hz
OPENING WITH DIES	OTHER VOLTAGES AVAILABLE ON REQUEST
+28 mm (+1.102")	
COMPLETE OPENING	DIMENSIONS
100 mm (3.937")	765 x 400 x 650 mm (30 x 16 x 26")
MASTER DIE LENGTH	NET WEIGHT
75 mm (2.953")	160 kg (353 lb)
STANDARD DIES	
15, 18, 21, 24, 27, 30, 33, 36, 39, 42, 45, 48, 51	

*Indicative capacities depending on hose and fitting type

OPTIONAL

- Maintenance Kit
- Electrical Footswitch
- Die Storage Panel
- Die Storage Table
- Die storage Table EVO
- Quick Change Gun
- Aluminium Quick Change Gun
- Die Sets for Brake & Air Conditioning Hoses
- Marking Dies
- Die Storage Panel EVO

S CRIMP 240 EVO

PROFESSIONAL WORKSHOP
BENCHTOP



KEY FEATURES

- Crimp force of up to 240 tonnes for hoses up to 2"
- Easy to use and robust
- Radial die movement
- High crimping force
- Extensive range of dies to suit crimping of hydraulic hoses
- Easy set up and maintenance
- Fast and reliable
- Model shown equipped with SCE control panel

CONTROL OPTIONS AVAILABLE ON REQUEST



SC

SCE

SCS

TECHNICAL SPECIFICATIONS

CAPACITY*

- 2wb: 2" max.
- 4ws: 2" max.
- 6ws: 1" ³/₄ max.

CRIMP RANGE

4 - 76 mm (0.157 - 2.992")

CRIMP FORCE

240 t

OPENING WITH DIES

+38 mm (+1.496")

COMPLETE OPENING

118 mm (4.645")

MASTER DIE LENGTH

100 mm (3.937")

STANDARD DIES

- 15, 18, 21, 24, 27, 30, 33, 36, 39, 42, 45, 48, 51, 57, 62, 66, 70

*Indicative capacities depending on hose and fitting type

NOISE LEVEL

<70 dB A

MOTOR

4.0 kW

VOLTAGES

220/240 V, 3Ph, 50 Hz

380/415 V, 3Ph, 50 Hz

208/240 V, 3Ph, 60 Hz

380/415 V, 3Ph, 60 Hz

Other voltages available on request

DIMENSIONS

765 x 400 x 650 mm

(30 x 16 x 26")

NET WEIGHT

165 kg (364 lb)

OPTIONAL



Maintenance Kit



Electrical Footswitch



Die Storage Panel



Die Storage Table



Die Storage Table EVO



Quick Change Gun



Aluminium Quick Change Gun



Mechanical Backstop



Die Sets for Brake & Air Conditioning Hoses



Marking Dies



Die Storage Panel EVO

S CRIMP 350 EVO / S CRIMP 350 L

FULL SERVICE WORKSHOP
BENCHTOP; VERY HIGH CRIMP FORCE



KEY FEATURES

Crimp force of up to 350 tonnes for hoses up to 3"

Easy to use and robust

Automatic maintenance alerts

Groove for 90° long drop fittings

Also available as S CRIMP 350 L with 4.0 kW motor

Model shown equipped with SCS control panel

CONTROL OPTIONS AVAILABLE ON REQUEST



TECHNICAL SPECIFICATIONS

CAPACITY*	NOISE LEVEL
2wb: 3" max.	<70 dB A
Textile / Suction Hose: 4" max.	MOTOR
4ws: 2" max.	5.5 kW / 4 kW
6ws: 2" max.	VOLTAGES
CRIMP RANGE	220/240 V, 3Ph, 50 Hz
4 - 130 mm (0.157 - 5.118")	380/415 V, 3Ph, 50 Hz
CRIMP FORCE	208/240 V, 3Ph, 60 Hz
350 t	380/415 V, 3Ph, 60 Hz
OPENING WITH DIES	DIMENSIONS
+54 mm (+2.125")	765 x 400 x 750 mm
COMPLETE OPENING	(30 x 16 x 30")
180 mm (7.086")	NET WEIGHT
MASTER DIE LENGTH	262 kg (578 lb)
115 mm (4.523")	TECHNICAL FEATURES
STANDARD DIES	-Automatic maintenance alerts
15, 18, 21, 24, 27, 30, 33, 36,	-Cylinder protection against dust - durable design
39, 42, 45, 48, 51, 57, 62,	-Also available as S CRIMP 350 EVO L with 4.0 kW Motor
66, 70, 73, 76	

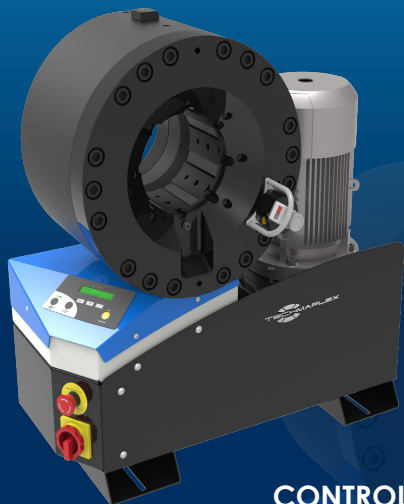
*Indicative capacities depending on hose and fitting type

OPTIONAL



S CRIMP 420 EVO

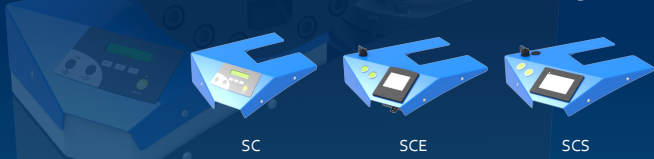
ASSEMBLING FOR FIELD REPAIR BENCHTOP CRIMP MACHINE



KEY FEATURES

- High crimping force of 420 tonnes
- Robust design for transport and operation in harsh environments
- Protected cylinders for trouble-free operation in high dust environments
- Large opening suitable for large bore hoses
- Easy maintenance due to foam pads and dust collector
- Model shown equipped with SC control panel

CONTROL OPTIONS AVAILABLE ON REQUEST



SC

SCE

SCS

TECHNICAL SPECIFICATIONS

CAPACITY*

6ws: 3" max.
Industrial: 4" max.

CRIMP RANGE

4 - 130 mm (0.157 - 5.118")

CRIMP FORCE

420 t
220/240 V, 3Ph, 50 Hz
380/415 V, 3Ph, 50 Hz
208/240 V, 3Ph, 60 Hz
380/415 V, 3Ph, 60 Hz

OPENING WITH DIES

+48 mm (+1.9 inch)

COMPLETE OPENING

178 mm (7.0 inch)

MASTER DIE LENGTH

120 mm (4.724 inch)

STANDARD DIES

15, 18, 21, 24, 27, 30, 33, 36,
39, 42, 45, 48, 51, 57, 62, 66,
70, 73, 76

NOISE LEVEL

<70 dB A

MOTOR

5.5 kW

VOLTAGES

220/240 V, 3Ph, 50 Hz
380/415 V, 3Ph, 50 Hz
208/240 V, 3Ph, 60 Hz
380/415 V, 3Ph, 60 Hz

DIMENSIONS

765 x 500 x 800 mm
(30 x 20 x 32")

PACKAGING

745 x 1150 x 945 mm
(29 x 45 x 37")

NET WEIGHT

395 kg (871 lb)

*Indicative capacities depending on hose and fitting type

OPTIONAL



Maintenance Kit



Electrical Footswitch



Die Storage Panel



Die Storage Table

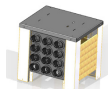


Table with racks EVO



Quick Change Gun



Aluminium Quick Change Gun



Die Sets for Brake & Air Conditioning Hoses



Marking Dies



Die Storage Panel EVO

S CRIMP 450

ASSEMBLING FOR FIELD REPAIR
BENCHTOP CRIMP MACHINE

KEY FEATURES

- High crimp force (450 tonnes)
- Large opening
- Wide family of dies for industrial hoses
- Long master dies
- Robust - designed for harsh environments
- Easy die set-up with ergonomic gun
- Metallic guard for the set stop



TECHNICAL SPECIFICATIONS

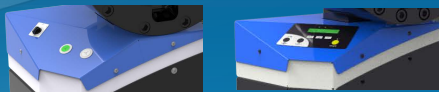
CAPACITY*	NOISE LEVEL
6ws: 3" max.	<65 dB A
Industrial: 4" max.	MOTOR
CRIMP RANGE	5,5 kW
4 - 130 mm (0.157 - 5.118")	VOLTAGES
CRIMP FORCE	220/240 V, 3Ph, 50 Hz
450 t	380/415 V, 3Ph, 50 Hz
OPENING WITH DIES	208/240 V, 3Ph, 60 Hz
+70 mm (+2.755")	380/415 V, 3Ph, 60 Hz
COMPLETE OPENING	DIMENSIONS
197 mm (7.755")	830 x 775 x 1450 mm
MASTER DIE LENGHT	(33 x 31 x 57")
140 mm (5.512")	PACKAGING
STANDARD DIES	1120 x 1020 x 1770 mm
15, 18, 21, 24, 27, 30, 33, 36, 39, 42, 45, 48, 51, 57, 62, 66, 70, 73, 76	(44 x 40 x 70")
	NET WEIGHT
	720 kg (1587 lb)

*Indicative capacities depending on hose and fitting type

OPTIONAL



Standard version button control or SC



V CRIMP 137

FIELD SERVICE & MOBILE WORKSHOP
MOBILE VAN



KEY FEATURES

- Robust and compact design
- Lightweight
- High crimping speed
- Suitable also for 90° elbow fittings
- Cylinder protection
- Remote head mounting option possible

TECHNICAL SPECIFICATIONS

CAPACITY*

2wb: 1¼" max.
4ws: 1¾" max.

CRIMP RANGE

4 - 70 mm (0.157 - 2.756")

CRIMP FORCE

137 t

OPENING WITH DIES

+28 mm (+1.102")

COMPLETE OPENING

100 mm (3.937")

MASTER DIE LENGTH

75 mm (2.952")

STANDARD DIES

15, 18, 21, 24, 27, 30, 33, 36,
39, 42, 45, 48, 51

NOISE LEVEL

72 dB A

MOTOR

2.0 kW

VOLTAGES

12 V
24 V

DIMENSIONS

650 x 550 x 610 mm
(26 x 22 x 24")

PACKAGING

800 x 600 x 830 mm
(31 x 24 x 33")

NET WEIGHT

103 kg (227 lb)

GROSS WEIGHT

120 kg (265 lb)

*Indicative capacities depending on hose and fitting type

OPTIONAL



Maintenance Kit



Quick Change Gun



Aluminium Quick Change Gun



Die Storage Panel



Marking Dies



Die Sets for Brake & Air Conditioning Hoses



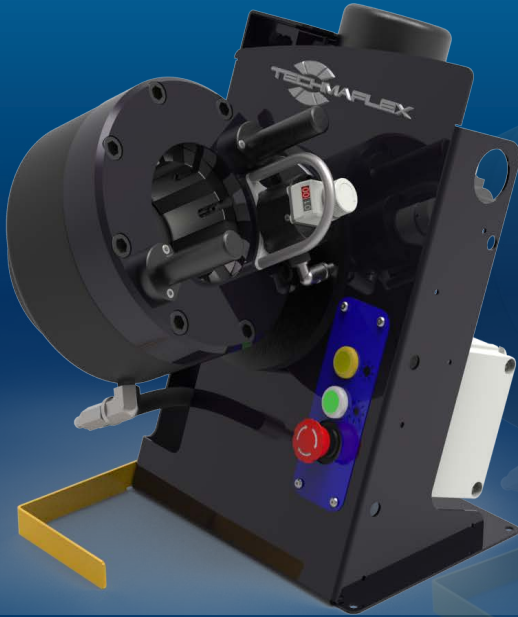
Battery & Charger

V CRIMP 137 EVO R

FIELD SERVICE & MOBILE WORKSHOP
MOBILE VAN

KEY FEATURES

- Swivel head for an ergonomic position
- Head axis perpendicular to the operator
- Compact and lightweight
- Quick change tool for dies
- Available die sets



CRIMPING MACHINES

28

TECHNICAL SPECIFICATIONS

CAPACITY*	NOISE LEVEL
2wb: 1¾" max.	72 dBA
4ws: 1¾" max.	MOTOR
CRIMP RANGE	2.0 kW
4 - 70 mm (0.157 - 2.756")	VOLTAGES
CRIMP FORCE	12 V
137 t	24 V
OPENING WITH DIES	DIMENSIONS
+28 mm (+1.102")	650 x 550 x 610 mm
COMPLETE OPENING	(26 x 22 x 24")
100 mm (3.937")	PACKAGING
MASTER DIE LENGHT	800 x 600 x 830 mm
75 mm (2.952")	(31 x 24 x 33")
STANDARD DIES	NET WEIGHT
15, 18, 21, 24, 27, 30, 33, 36, 39, 42, 45, 48, 51	103 kg (227 lb)
	GROSS WEIGHT
	120 kg (265 lb)

*Indicative capacities depending on hose and fitting type

OPTIONAL



Maintenance kit



Quick change gun



Aluminium Quick Change Gun



Die Storage Panel



Die Storage Panel EVO



Marking Dies



Die Sets for Brake & Air Conditioning Hoses



Battery & Charger

V CRIMP 137 L

FIELD SERVICE & MOBILE WORKSHOP
MOBILE VAN



KEY FEATURES

- Robust and compact design
- Lightweight
- High crimping speed
- Suitable also for 90° elbow fittings
- Cylinder protection

TECHNICAL SPECIFICATIONS

CAPACITY*	MOTOR
2wb: 1¼" max.	2.0 kW
4ws: 1¼" max.	VOLTAGES
CRIMP RANGE	12 V
4 - 70 mm (0.157 - 2.756")	24 V
CRIMP FORCE	DIMENSIONS
137 t	250 x 320 x 300 mm
OPENING WITH DIES	(10 x 13 x 12")
+28 mm (+1.102")	PACKAGING
COMPLETE OPENING	800 x 600 x 830 mm
100 mm (3.937")	(31 x 24 x 33")
MASTER DIE LENGTH	NET WEIGHT
75 mm (2.952")	86 kg (190 lb)
STANDARD DIES	GROSS WEIGHT
15, 18, 21, 24, 27, 30, 33, 36, 39, 42, 45, 48, 51	102 kg (225 lb)
NOISE LEVEL	TECHNICAL FEATURES
72 dB A	Dimensions of power pack: 440 x 320 x 320 mm (17 x 13 x 13")
*Indicative capacities depending on hose and fitting type	

OPTIONAL



Maintenance Kit



Quick Change Gun



Aluminium Quick Change Gun



Die Storage Panel



Marking Dies



Die Sets for Brake & Air Conditioning Hoses



Front Die Storage



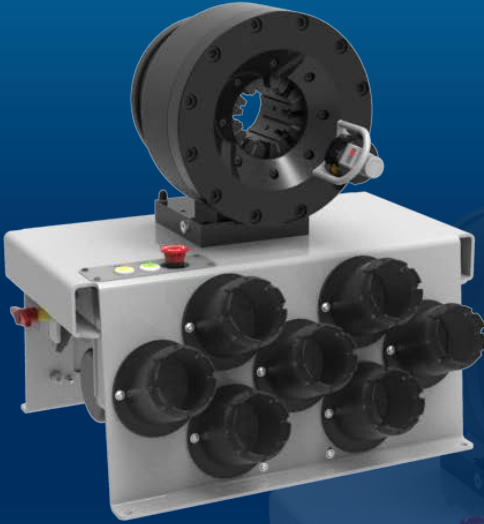
Battery & Charger

V CRIMP 240

FIELD SERVICE & MOBILE WORKSHOP
MOBILE VAN

KEY FEATURES

- Robust design
- Ergonomic micrometer
- High crimping speed
- Radial movement of the dies
- Cylinder protection
- Remote head mounting option possible



TECHNICAL SPECIFICATIONS

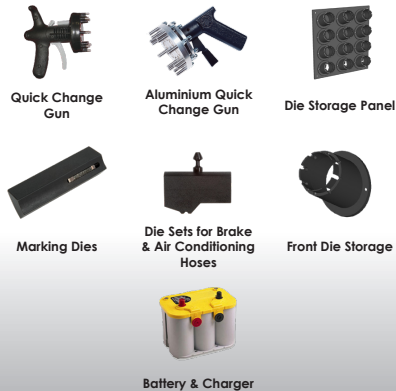
CAPACITY*	MOTOR
2wb: 2" max.	2.0 kW
4ws: 2" max.	VOLTAGES
6ws: 1" max.	12 V
CRIMP RANGE	24 V
4 - 76 mm (0.157 - 2.992")	220/240 V, 3Ph, 50 Hz
CRIMP FORCE	380/415 V, 3Ph, 50 Hz
240 t	208/240 V, 3Ph, 60 Hz
OPENING WITH DIES	380/415 V, 3Ph, 60 Hz
+38 mm (+1.496")	DIMENSIONS
COMPLETE OPENING	650 x 550 x 670 mm
118 mm (4.646")	(26 x 22 x 26")
MASTER DIE LENGTH	PACKAGING
100 mm (3.937")	800 x 600 x 830 mm
STANDARD DIES	(31 x 24 x 33")
15, 18, 21, 24, 27, 30, 33, 36, 39, 42, 45, 48, 51, 57, 62, 66, 70	NET WEIGHT
NOISE LEVEL	118 kg (260 lb)
72 dB A	GROSS WEIGHT
	180 kg (397 lb)

*Indicative capacities depending on hose and fitting type

OPTIONAL



Maintenance Kit



Quick Change Gun

Aluminium Quick Change Gun

Die Storage Panel

Marking Dies

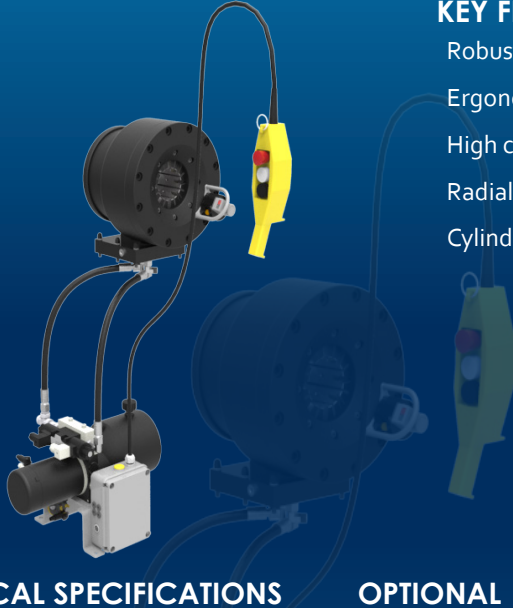
Die Sets for Brake & Air Conditioning Hoses

Front Die Storage

Battery & Charger

V CRIMP 240 L

FIELD SERVICE & MOBILE WORKSHOP
MOBILE VAN



KEY FEATURES

- Robust design
- Ergonomic micrometer
- High crimping speed
- Radial movement of the dies
- Cylinder protection

TECHNICAL SPECIFICATIONS

CAPACITY*

- 2wb: 2" max.
- 4ws: 2" max.
- 6ws: 1" max.

CRIMP RANGE

4 - 76 mm (0.157 - 2.992")

CRIMP FORCE

240 t

OPENING WITH DIES

+38 mm (+1.496")

COMPLETE OPENING

118 mm (4.646")

MASTER DIE LENGTH

100 mm (3.937")

STANDARD DIES

15, 18, 21, 24, 27, 30, 33, 36, 39, 42, 45, 48, 51, 57, 62, 66, 70

NOISE LEVEL

72 dB A

TECHNICAL FEATURES

Dimensions of power pack:
440 x 320 x 320 mm (17 x 13 x 13")

*Indicative capacities depending on hose and fitting type

MOTOR

2.0 kW

VOLTAGES

- 12 V
- 24 V
- 220/240 V, 3Ph, 50 Hz
- 380/415 V, 3Ph, 50 Hz
- 208/240 V, 3Ph, 60 Hz
- 380/415 V, 3Ph, 60 Hz

DIMENSIONS

320 x 360 x 350 mm
(13 x 13.5 x 14")

PACKAGING

800 x 600 x 830 mm

NET WEIGHT

130 kg (287 lb)

GROSS WEIGHT

180 kg (397 lb)

OPTIONAL



Maintenance Kit



Quick Change Gun



Aluminium Quick Change Gun



Die Storage Panel



Marking Dies



Die Sets for Brake & Air Conditioning Hoses



Front Die Storage



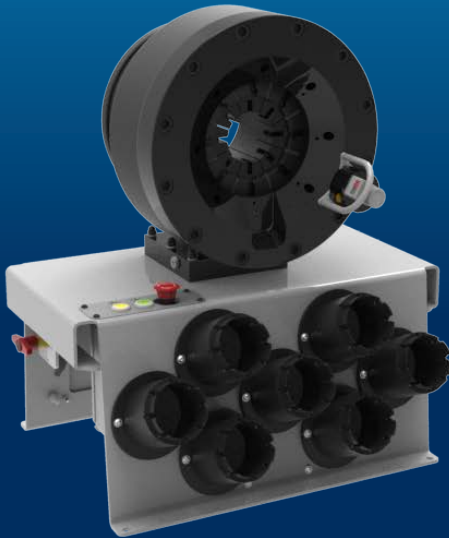
Battery & Charger



Ergonomic Micrometer

V CRIMP 350

FIELD SERVICE & MOBILE / CONTAINER WORKSHOP
MOBILE VAN



KEY FEATURES

- Robust design
- Large opening
- High crimping force
- Ergonomic micrometer
- High crimping speed
- Radial movement of the dies
- Cylinder protection
- Remote head mounting option possible

TECHNICAL SPECIFICATIONS

CAPACITY*	MOTOR
2wb: 3" max.	2.0 kW
4ws: 2" max.	VOLTAGES
6ws: 2" max.	12 V
Textile / Suction Hose: 4"	24 V
CRIMP RANGE	220/240 V, 3Ph, 50 Hz
4 - 130 mm (0.157 - 5.118")	380/415 V, 3Ph, 50 Hz
CRIMP FORCE	208/240 V, 3Ph, 60 Hz
350 t	380/415 V, 3Ph, 60 Hz
OPENING WITH DIES	DIMENSIONS
+54 mm (+2.125")	650 x 550 x 750 mm
COMPLETE OPENING	(26 x 22 x 30")
180 mm (7.086")	PACKAGING
MASTER DIE LENGTH	800 x 600 x 830 mm
115 mm (4.528")	(31 x 24 x 33")
STANDARD DIES	NET WEIGHT
15, 18, 21, 24, 27, 30, 33, 36, 39, 42, 45, 48, 51, 57, 62, 66, 70, 73, 76	210 kg (463 lb)
NOISE LEVEL	GROSS WEIGHT
<65 dB A	260 kg (573 lb)
	SAFETY REMARK
	Possible limitations in case of double elbow fittings

*Indicative capacities depending on hose and fitting type

OPTIONAL



Maintenance Kit



Quick Change Gun



Aluminium Quick Change Gun



Die Storage Panel



Marking Dies



Die Sets for Brake & Air Conditioning Hoses



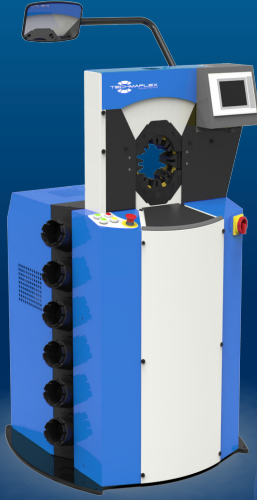
Front Die Storage



Battery & Charger

P CRIMP 140

ASSEMBLING FOR MASS PRODUCTION
STAND TYPE CRIMP MACHINE, SCS SYSTEM



KEY FEATURES

- Safe Crimp System (SCS) control
- Large production capacity (small/medium bore)
- Low noise level
- Precise
- Robust
- Easy die set-up with ergonomic gun

TECHNICAL SPECIFICATIONS

CAPACITY*	NOISE LEVEL
2wb: 1¼" max.	<69 dB A
4ws: 1¾" max.	MOTOR
CRIMP RANGE	5,5 kW
4 - 70 mm (0.157 - 2.756")	VOLTAGES
CRIMP FORCE	220/240 V, 3Ph, 50 Hz
140 t	380/415 V, 3Ph, 50 Hz
OPENING WITH DIES	208/240 V, 3Ph, 60 Hz
+45 mm (+1.772")	DIMENSIONS
COMPLETE OPENING	890 x 810 x 1390 mm
125 mm (4.921")	(35 x 32 x 55")
MASTER DIE LENGTH	PACKAGING
80 mm (3.150")	1120 x 1020 x 1770 mm
STANDARD DIES	(44 x 40 x 70")
15, 18, 21, 24, 27, 30, 33, 36, 39, 42, 45, 48	NET WEIGHT
	675 kg (1488 lb)

*Indicative capacities depending on hose and fitting type

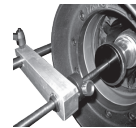
OPTIONAL



Aluminium Quick Change Gun



Electrical Footswitch



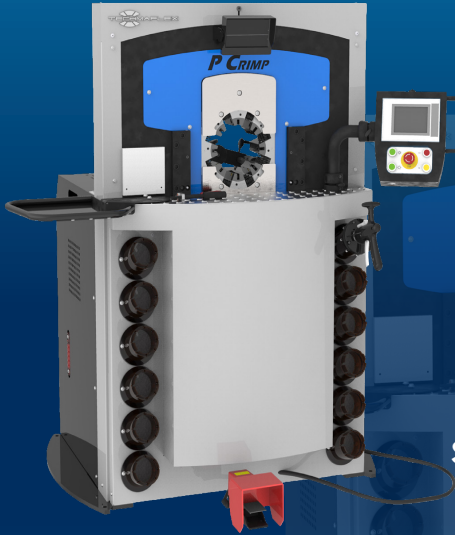
Mechanical Backstop



Back View Camera

P CRIMP 320

ASSEMBLING FOR MASS PRODUCTION
STAND TYPE CRIMP MACHINE, SCS SYSTEM



KEY FEATURES

- High crimp force
- Large opening
- Safe Crimp System (SCS) control
- Wide family of dies for industrial hoses
- Robust structure
- Fast and ergonomic
- Low noise level
- Easy die-set up with ergonomic gun

STANDARD



Quick Change Gun

SCS Safe Crimp System

Mirror

Electrical Footswitch

Die Storage

TECHNICAL SPECIFICATIONS

CAPACITY*	NOISE LEVEL
2wb: 3" max.	<65 dB A
4ws: 2" max.	MOTOR
6ws: 2" max.	5.5 kW / 7.5 kW (Fast Version)
Textile & Suction Hose: 4" max.	VOLTAGES
CRIMP RANGE	220/240 V, 3Ph, 50 Hz
4 - 130 mm (0.157 - 5.118")	380/415 V, 3Ph, 50 Hz
CRIMP FORCE	208/240 V, 3Ph, 60 Hz
320 t	380/415 V, 3Ph, 60 Hz
OPENING WITH DIES	DIMENSIONS
+80 mm (+3.149")	1240 x 995 x 1615 mm
COMPLETE OPENING	(49 x 39 x 64")
207 mm (8.149")	PACKAGING
MASTER DIE LENGTH	1400 x 1100 x 1960 mm
100 mm (3.937")	(55 x 43 x 77")
STANDARD DIES	NET WEIGHT
15, 18, 21, 24, 27, 30, 33, 36, 39, 42, 45, 48, 51, 57, 62, 66, 70, 73, 76	2000 kg (4409 lb)
GROSS WEIGHT	2300 kg (5071 lb)

*Indicative capacities depending on hose and fitting type

OPTIONAL



Die Storage Panel

Marking Dies

Back View Camera

Aluminium Quick Change Gun

Mechanical Backstop

Side Table & Pushing Panel

Die Sets for Brake & Air Conditioning Hoses

Automatic Central Greasing System

P CRIMP 480

ASSEMBLING FOR MASS PRODUCTION
STAND TYPE CRIMP MACHINE, SCS SYSTEM



KEY FEATURES

- High crimp force
- Large opening
- Safe Crimp System (SCS) control
- Wide family of dies for industrial hoses
- Long master dies
- Robust
- Low noise level
- Easy die set-up with ergonomic gun

STANDARD



Quick Change Gun

SCS Safe Crimp System

Mirror

Electrical Footswitch

Die Storage

TECHNICAL SPECIFICATIONS

CAPACITY*	NOISE LEVEL
6ws: 3" max. Textile & Suction Hose: 4" max.	<65 dB A
CRIMP RANGE	MOTOR
4 - 160 mm (0.157 - 6.299")	5,5 kW
CRIMP FORCE	VOLTAGES
480 t	220/240 V, 3Ph, 50 Hz 380/415 V, 3Ph, 50 Hz
OPENING WITH DIES	208/240 V, 3Ph, 60 Hz 380/415 V, 3Ph, 60 Hz
+85 mm (+3.346")	DIMENSIONS
COMPLETE OPENING	1300 x 900 x 1700 mm (51 x 35 x 67")
212 mm (8.346")	PACKAGING
MASTER DIE LENGTH	1400 x 1100 x 1960 mm (55 x 43 x 77")
125 mm (4.921")	NET WEIGHT
STANDARD DIES	2200 kg (4850 lb)
15, 18, 21, 24, 27, 30, 33, 36, 39, 42, 45, 48, 51, 57, 62, 66, 70, 73, 76	GROSS WEIGHT
	2430 kg (5357 lb)

*Indicative capacities depending on hose and fitting type

OPTIONAL



Die Storage Panel

Marking Dies

Back View Camera

Aluminium Quick Change Gun

Mechanical Backstop

Side Table & Pushing Panel

Die Sets for Brake & Air Conditioning Hoses

Automatic Central Greasing System

XL CRIMP 800

ASSEMBLING FOR LARGE BORE HOSES
STAND TYPE CRIMP MACHINE, SCS CONTROL



KEY FEATURES

- Designed for heavy duty large bore hydraulic hoses
- High power and speed
- Ergonomically designed for large bore hoses
- Safe Crimp System (SCS) for maximum reliability during the crimping process
- Large opening up to 8"
- Long master dies
- Very high crimping force

STANDARD



Electrical Footswitch



Hose Support



SCS Safe Crimp System

OPTIONAL



Quick Change Gun



Die Storage Panel



Back View Camera

TECHNICAL SPECIFICATIONS

CAPACITY*	MOTOR
4WS: 4" max.	7.5 kW
6WS: 3" max.	VOLTAGES
Industrial: 6"	380/415 V, 3Ph, 50 Hz
CRIMP RANGE	DIMENSIONS
4 - 230 mm (0.157 - 9.055")	1400 x 1400 x 2060 mm
CRIMP FORCE	(55 x 55 x 81")
800 t	NET WEIGHT
OPENING WITH DIES	4300 kg (9480 lb)
+100 mm (+3.937")	GROSS WEIGHT
COMPLETE OPENING	5000 kg (11023 lb)
347 mm (13.661")	TECHNICAL FEATURES
MASTER DIE LENGTH	-Machine platform equipped with rollers to support the hose at working height (1100 mm) in order to handle large bore hoses more easily
180 mm (7.087")	-Supplied as standard:
NOISE LEVEL	Intermediate dies 250/130
< 70 dB A	

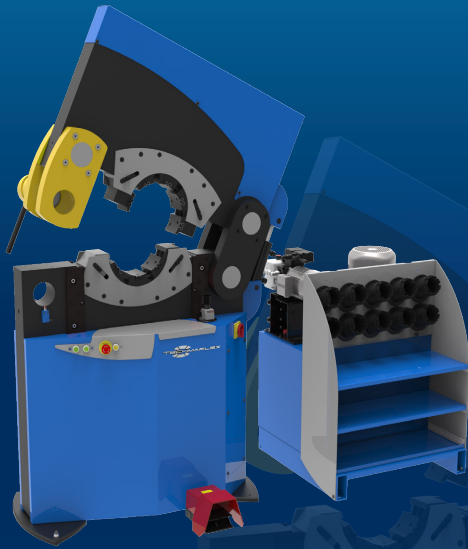
*Indicative capacities depending on hose and fitting type

XL CRIMP 320

PESO 320
XXL WORKSHOP

KEY FEATURES

- Unique on market
- Lateral opening
- No limit on end connection diameter
- Easy to use
- Separated power pack
- Integrated safety system



TECHNICAL SPECIFICATIONS

CAPACITY*	VOLTAGES
Industrial: 6"	230 V, 3 Ph
CRIMP RANGE	400 V, 3 Ph
4 - 230 mm (0.157 - 9.055")	MACHINE DIMENSIONS
CRIMP FORCE	1265 x 680 x 1800 mm
320 t	(50 x 27 x 71")
OPENING WITH DIES	POWER PACK DIMENSIONS
+55 mm (+2.165")	890 x 800 x 1050 mm
COMPLETE OPENING	(35 x 31 x 41")
260 mm (10.236")	MACHINE WEIGHT
LATERAL OPENING	1700 kg (3748 lb)
247 mm (9.724")	POWER PACK WEIGHT
MASTER DIE LENGTH	400 kg (882 lb)
125 mm (4.921")	TECHNICAL FEATURES
MOTOR	-Die sizes available upon request
5.5 kW	

*Indicative capacities depending on hose and fitting type

STANDARD



XL CRIMP 400

PE 280
XXL WORKSHOP

KEY FEATURES

- High crimping force
- Ergonomic operation
- Economic solution
- Large opening
- Robust
- Easy set up
- Versatile
- Adjustable crimping working position



STANDARD



Remote Control



Ergonomic Micrometer

TECHNICAL SPECIFICATIONS

CAPACITY*	MOTOR
Industrial: 6"	5,5 kW
CRIMP RANGE	VOLTAGES
4 - 210 mm (0.157 - 8.268")	230 V, 3 Ph
CRIMP FORCE	400 V, 3 Ph
400 t	DIMENSIONS
OPENING WITH DIES	1100 x 900 x 1550 mm
+50 mm (+1.969")	(43 x 35 x 61")
COMPLETE OPENING	WEIGHT
285 mm (11.221")	750 kg (165 lbs)
MASTER DIE LENGTH	TECHNICAL FEATURES
150 mm (5.906")	-Die sizes available upon request

OPTIONAL



Electrical Footswitch

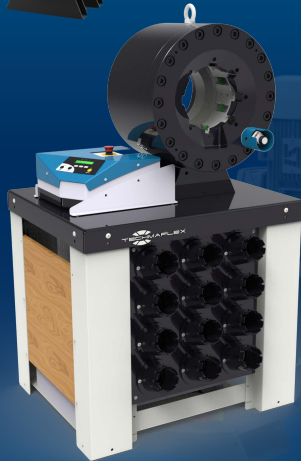
*Indicative capacities depending on hose and fitting type

S CRIMP 450-200/P

XXL WORKSHOP
ASSEMBLING FOR LARGE BORE HOSES



Version with remote head



Production version with "silent" central unit

KEY FEATURES

- High crimping force (450 tonnes)
- Large opening
- Large range of dies for industrial hoses
- Long master dies
- Robust & Ergonomic
- Easy die set-up with ergonomic gun
- Metallic guard for the set stop
- Remote head for more use flexibility in the workshop
- Production option:

- "silent" central unit with 50L tank
- Table with racks EVO
- 3 control panels available

TECHNICAL SPECIFICATIONS

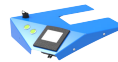
CAPACITY*	MOTOR
Industrial: 4" & 6"	5,5 kW
CRIMP RANGE	VOLTAGES
4 - 180 mm (0.157 - 7.087")	220/240 V, 3Ph, 50 Hz
CRIMP FORCE	380/415 V, 3Ph, 50 Hz
450 t	208/240 V, 3Ph, 60 Hz
OPENING WITH DIES	380/415 V, 3Ph, 60 Hz
+70 mm (+2.755")	DIMENSIONS
MASTER DIE OPENING**	830 x 775 x 1450 mm
270 mm (9.055")	(33 x 31 x 57")
MASTER DIE LENGHT	PACKAGING
125 mm (4.921")	1120 x 1020 x 1770 mm
STANDARD DIES	(44 x 40 x 70")
15, 18, 21, 24, 27, 30, 33, 36, 39, 42, 45, 48, 51, 57, 62, 66, 70, 73, 76. Dies up to 180 mm available on request	NET WEIGHT
* Indicative capacities depending on hose and fitting type	450 kg
** Full passage 230mm	750 kg (pro version)

OPTIONAL

Control options available on request



SC



SCE



SCS



Die Storage Panel



Table with racks EVO



Ergonomic Gun



Aluminium Quick Change Gun



Marking dies



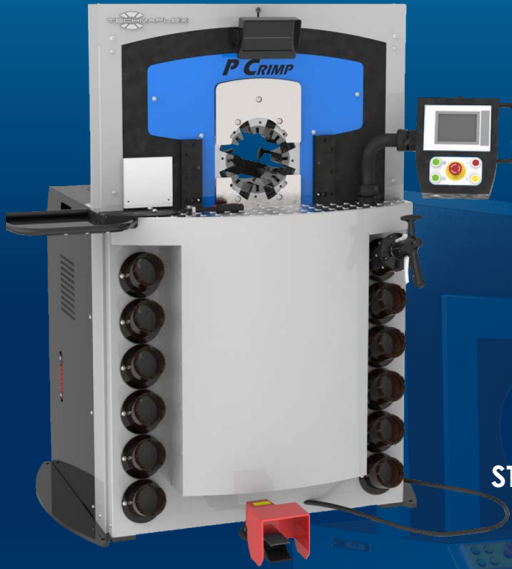
Die sets for Brake & Air Conditioning Hoses



Electrical Footswitch

XL CRIMP 450

8" HOSE CRIMPER



KEY FEATURES

- High crimping force
- Large opening for hoses up to 8" with #150 flanges
- Bottom master die is fixed for ease of crimping large hoses
- Diameter adjustment is controlled by a numerical vernier and pressure gauge (no electronics)
- Possibility to install eccentric and/or deported dies

STANDARD

SCS Safe Crimp System

TECHNICAL SPECIFICATIONS

CAPACITY*	COMPLETE OPENING
Industrial: 8"	350 mm (13.779")
MAX CRIMPING DIAMETER	MAXIMUM DIE LENGTH
300 mm (11.811") (with special dies)	140 mm (5.512")
CRIMP FORCE	GROSS WEIGHT
450t	2900 kg (6393 lb)
OPENING WITH DIES	TECHNICAL FEATURES
+ 130mm (4.921")	-Die sizes available upon request

OPTIONAL



Aluminium Quick Change Gun



Quick Change Gun



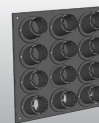
Electrical Footswitch



Mirror



Back View Camera



Die Storage Panel

*Indicative capacities depending on hose and fitting type

XL CRIMP 550/XL CRIMP 550-16

XXL WORKSHOP



KEY FEATURES

- Very large opening
- Fixed bottom die
- Long dies available
- High crimping force
- Symmetric machine
- Low working height
- Ergonomic
- Safe Crimp System (SCS)
- Step crimping capability with SCS

STANDARD



SCS Safe Crimp System



Die Storage

TECHNICAL SPECIFICATIONS

	XL CRIMP 550	XL CRIMP 550-16
CAPACITY*	Industrial: 12"	Industrial: 16"
CRIMP FORCE	550 t	550 t
COMPLETE OPENING	490 mm (19.291")	660 mm (25.984")
OPENING WITH DIES	+130 mm (+5.118")	+160 mm (6.299")
MASTER DIE LENGTH	200 mm (7.874")	200 mm (7.874")
MOTOR	5.5 kW	5.5 kW
VOLTAGES	230 V, 3 Ph 400 V, 4 Ph	230 V, 3 Ph 400 V, 4 Ph
MACHINE DIMENSIONS	1300 x 1050 x 2230 mm (35 x 41 x 88")	1450 x 1100 x 2300 mm (57 x 43 x 91")
POWER PACK DIMENSIONS	800 x 790 x 1650 mm (31 x 31 x 65")	800 x 790 x 1650 mm (31 x 31 x 65")
MACHINE WEIGHT	4000 kg (8818 lb)	4300 kg (9480 lb)
POWER PACK WEIGHT	500 kg (1102 lb)	500 kg (1102 lb)
TECHNICAL FEATURES	Die sizes available upon request	

*Indicative capacities depending on hose and fitting type

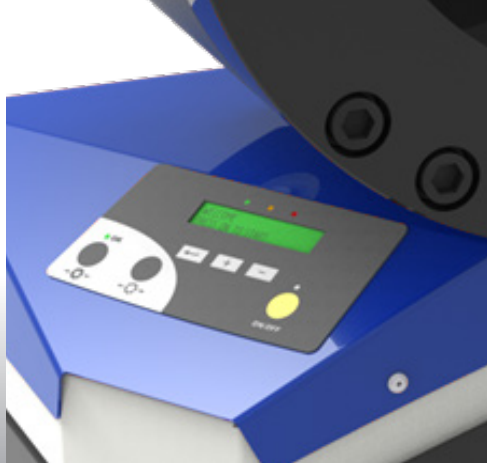
ACCESSORIES AND TOOLS

SAFE CRIMP (SC) SMART CONTROL PANEL

A basic smart control panel, which includes maintenance functions essential for keeping the machine in good condition.

Maintenance functions include:

- **2 Counters:** 1 daily counter and 1 machine cycle counter
- **3 LED Indicator Lights:** 1 for daily maintenance, 1 for advanced maintenance and 1 for expert maintenance
- **Semi-automatic function:** The semi-automatic opening is ideal for serial assemblies as it can be adjusted specifically to allow the fitting to pass through the dies with minimal clearance, saving energy by reducing the cycle time.



SAFE CRIMP ELECTRICAL PANEL (SCE)

A modern touch screen with electronic buttons, which includes maintenance functions essential for keeping the machine in good condition.

Maintenance functions include:

- **Functions of the Safe Crimp Panel**
- **Electronic micrometer** with the ability to save up to 25 configurations and automatic die selection
- **Caliper option** for automatic correction of the crimping diameter



ACCESSORIES AND TOOLS

SAFE CRIMP SYSTEM



Benefits of Safe Crimp System control for hose assembly activity:

- Friendly and easy setting of crimping parameters including:
 - √ Pre-set of crimp Ø calibration to compensate ferrule elastic rebound
 - √ Reminder of dies to be used
 - √ Easy automatic opening setting
- Storage of recurrent and customised crimp recipes: favourite crimp assemblies:
 - √ Short cuts for faster setting
 - √ No crimp Ø re-adjusting
 - √ Possibility to download your customised recipes by USB port and save on separate computer (CSV file)
- Production counter for batch quantity control:
 - √ Quality monitoring by: Automatic crimp Ø check (Only available on 7" screen)
 - √ Continuous crimp pressure measurement (Option on 4.5" screen)
 - √ Crimping pressure and count control for mistake proofing assembly (Option 4.5" screen)
- Operator identification (Log in / log out)
- Maintenance Warnings



S TEST BENCH 2000 L

TEST BENCH, PROOF PRESSURE & CERTIFY
STAND TYPE MACHINE

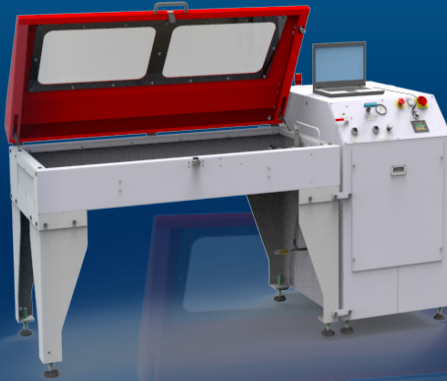
KEY FEATURES

Easy to use and robust

Safe: Steel Compartment, polycarbonate transparent window and metal mesh

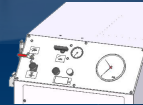
Large testing area for up to 6 hoses

Variable pressure up to 2000 bar



Model shown L (small tank)

STANDARD



Power Unit M



Power Unit E

TECHNICAL SPECIFICATIONS

INDICATIVE CAPACITY

1200 mm (48")

HOSE CONNECTION

6 maximum

AIR CONSUMPTION

1000 l/min

OPENING/CLOSING TIME

10-14 seconds

MAX PRESSURE

2000 bar (29000 psi)

INNER TANK CAPACITY

1700 x 790 x 200 mm
(67 x 31 x 8")

DIMENSIONS (PANEL)

700 x 1200 x 1220 mm
(28 x 47 x 48")

PACKAGING (TANK)

1600 x 1200 x 1280 mm
(63 x 47 x 50")

PACKAGING (PANEL)

1000 x 1200 x 1280 mm
(39 x 47 x 50")

NET WEIGHT

430 kg (948 lb)

GROSS WEIGHT

500 kg (1102 lb)

TECHNICAL FEATURES

-Minimum compressed air input 8,5 bar (123 psi)

FEATURES AND OPTIONS

DISPLAY FEATURES

- M** Gauge measurement display
- E** Numerical measurement display with USB connection for computer report and light

FURTHER OPTIONS

- Autonomous filling pump
- Air blowing system for both models

S TEST BENCH 2000 XL

TEST BENCH, PROOF PRESSURE & CERTIFY
STAND TYPE MACHINE



Model shown XL ISD

KEY FEATURES

- Easy to use and robust
- Safe: Steel Compartment, polycarbonate transparent window and metal mesh
- Large testing area for up to 6 hoses
- Pallet loading with a forklift
- Variable pressure up to 2000 bar

TECHNICAL SPECIFICATIONS

INDICATIVE CAPACITY

1200 mm (48")

HOSE CONNECTION

6 maximum

AIR CONSUMPTION

1000 l/min

OPENING/CLOSING TIME

10-14 seconds

MAX PRESSURE

2000 bar (29000 psi)

INNER TANK CAPACITY

1400 x 900 x 600 mm
(55 x 35 x 24")

DIMENSIONS (PANEL)

700 x 1200 x 1220 mm
(28 x 47 x 48")

PACKAGING (TANK)

1600 x 1200 x 1280 mm
(63 x 47 x 50")

PACKAGING (PANEL)

1000 x 1200 x 1280 mm
(39 x 47 x 50")

WEIGHT

600 kg (1323 lb)

NET WEIGHT

500 kg (1102 lb)

TECHNICAL FEATURES

- Minimum compressed air input 8.5 bar (123 psi)
- Minimum test pressure 250 bar (3626 psi), with low pressure option 50 bar (725 psi) (only for XL ISD)

FEATURES AND OPTIONS

STANDARD OPTIONS

XL ISD:

- Light included
- Touch screen panel
- Printer

XL E:

- Light included
- Numerical measurement display with USB connection for computer report.

FURTHER OPTIONS

- Autonomous filling pump
- Air blowing system for both models
- Low pressure pump only for XL ISD

TUBE APPLICATIONS



POSSIBLE APPLICATIONS

ECO VERSION - after-market manufacturers

PRO VERSION - OEM manufacturers



Tube stacking



Tube reduction before drawing



Assembling



Geometrical deformation



Calibration



Insulator



Cement Rods

Activities:

Greenhouse, scaffolding, urban furniture, playground equipment, hand rails, mechanical construction, furniture, etc.

AVAILABLE OPTIONS



Mechanical Set Stop*



Crimp Heads



Special Hydraulic Power Pack



Oil Cooling System



Foot Pedal



Central Greasing System



Computer**

*Accuracy and repeatability optimized

**Pressure and diameters controls, data storage to save recipes, assembly by step, alert maintenance

AUTOMOTIVE APPLICATIONS



POSSIBLE APPLICATIONS



Air Spring



Part calibration - shock absorbers, pulleys



A/C, brake hoses, control cables



Automotive pipe



Airbag inflators

AVAILABLE OPTIONS



Mechanical Set Stop



Crimp Heads



Special Hydraulic Power Pack



Foot Pedal



Central Greasing System



Oil Cooling System



Computer**

*Accuracy and repeatability optimized

**Pressure and diameters controls, data storage to save recipes, assembly by step, alert maintenance



www.techmaflex.com

© Copyright 2019 Techmaflex. All rights reserved.
All product names are either trademarks or registered trademarks of
Techmaflex unless otherwise stated.

Представитель в России:
ООО «ПО ИП»
Тел: +7 (812)602-77-08
E-mail: info@poip.ru
www.poip.ru

