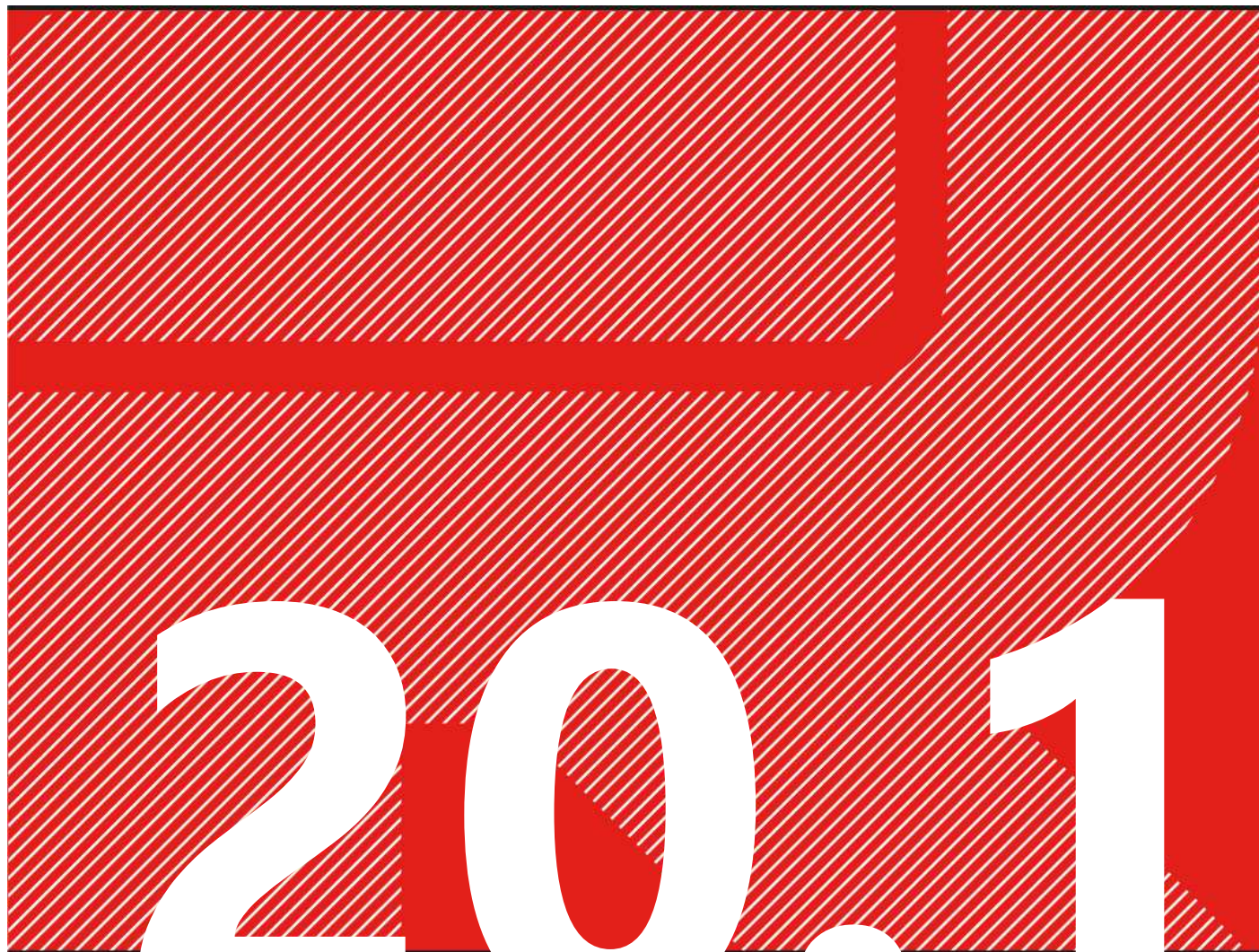


Rinaldi

MACHINES FOR PROFILES FOR ALUMINIUM, STEEL AND PVC



PRICE LIST

20.1 - EN

in force from june 2020

Представитель в России:

ООО «ПО ИП»

Тел: +7 (812)602-77-08

E-mail: info@poip.ru

www.poip.ru

Contacts and Service

The service is guaranteed every working day from Monday to Friday by contacting:

Morning from 08:30 to 12:30
Afternoon from 14:00 to 18:00

Phone: +39 059 775100

e-mail: info@rinaldisrl.com
e-mail:assistenza@rinaldisrl.com

Contact person : Massimo Rinaldi

Terms of service during the period of 12 months Warranty (Italy)

The warranty period of the product starts with the date of delivery; if not otherwise noted on the product page includes telephone, mail and assistance is included. Repair or replacement of defective parts at RINALDI'S HEADQUARTER is also included; shipping costs of machinery and / or spare parts are NOT INCLUDED. Customers can have the option of having a technician at their location by paying the costs indicated in following table.

Terms of Service outside the warranty period (Italy)

After the period of warranty an hotline (email) is available free of charge. Repair and / or replacement of parts broken / defective, shipping of equipment and / or supplies will be charged. The customer will have the option of having a technician at his location by paying the cost indicated in following table.

Cost table (Italy)

Distance in kilometers from the seat Rinaldi,Vignola(MO) at the customer site

0<050 050<100 100< 150 150<200 200<250 250<300 300<350 350<400 400<450 450<500

Cost of DC	€ 75,00	€ 125,00	€ 210,00	€ 260,00	€ 320,00	€ 370,00	€ 490,00	€ 620,00	€ 670,00	€ 830,00
Cost of TR	€ 130,00	€ 230,00	€ 360,00	€ 430,00	€ 570,00	€ 670,00	€ 780,00	€ 890,00	€ 990,00	€ 1150,00

Cost ogno now working external € 60,00

Cost ogno now working internal € 50,00

Parts

The demand for spare parts must be sent with the data necessary to the identification of machinery, detectable on the plate, such as machine model, serial number and year of manufacture; specifying the required component and quality. The supply of parts includes a payment anticipated or on delivery.

END MILLING

INT 30 - 30F	1
INT 30M	3
INT 32 - INT 32A	5
INT 32S - INT 32AS	7
INT 35 - INT 35S	9

END MILLING BEAD

BABY	11
------	----

COPY ROUTERS

PAN 22	13
PAN 26	15
PAN 31	17
PAN 31C	19
PAN 36	21
PAN 40 - PAN 40I	23
PAN 38I	25
PAN 38 - PAN 38LI	27

DRILLING MACHINES

FOR 16	29
FOR 18P	31
FOR 22D - FOR 23D - FOR 33D	33

DRILLING MACHINE FOR HINGES

MUL 46R	35
---------	----

SINGLE HEAD SAWING MACHINES

TMA 42 - TMA 42A	37
TMA 60A	39
TMF 55A	41
RIF 35	43
TMA 60A + ALIMENTATORE - TMA 60E + ALIMENTATORE	45

DOUBLE HEAD SAWING MACHINES

TDF 55P	47
TDF 55R	49
TDF 55E	51

CNC MACHINES

CDL 33Q	53
---------	----

PUNCHING MACHINES

PNEUFOR	55
PNEUFOR 12	57

ROTOFILE MACHINE

LIMA 25	59
---------	----

ROLLING BENCHES

RIS 22 - RIS 44 - RIS 66	61
RIS 20M - RIS 40M	63
RIS 17V - RIS 40V - RIS 60V	65
RIS 36E	67
RIS 70E	69

SWARF EXHAUSTERS

ASP 15 - ASP 22 - ASP 40	71
--------------------------	----

LOGISTICS

BAS 24	73
PRO 4	75

SUPPLIES	77
SALES CONDITIONS	79

INT 30

end milling machine

INT 30F

Rinaldi



code 500251

€ 3.300.00

code 500252

€ 3.800.00

▶ 20.1 - EN

DESCRIPTION

Horizontal end milling machine with manual feed. Performs milling at 90 ° and only on the version "30F" with variable angle from -45° to +45°. Quick tool change protection of the working area.

FEATURES

Worktop of ground steel
Forward movement on linear guides and recirculating ball bearings
Motor brake
Horizontal and vertical pneumatic clamps with low pressure device
Length stop at six positions
Pneumatic lubrication system with emulsionated oil
Tool repository
Chips conveyor side of

INT 30**INT 30F****Rinaldi**

TECHNICAL DATAS	Power supply treephase Treephase motor power Spindle speed Stroke axis X Clamp capacity (bxh) Maximum cutter diameter Milling angle (model 30) Milling angle (model 30F) Weight	380/400-50/60 1.1 2850 320 200x120 160 90 -45...+45 110	Volt - Hz kW r.p.m. mm mm mm ° ° kg
STANDARD EQUIPEMENT	Service spanners Use and maintenance manual and ce marking Cutter sleeve cutters Ø27/32 L=135 mm (installed) Locking pin on cutter sleeve Quick tool change lever Adjustable leveling feets (installed) Air blow gun for cleaning (installed)		
OPTIONS	Roller conveyor for supporting profiles L=150 mm Customized milling cutters set Consumables	603013	€ 146,00 ask quotation see page 77
POWER SUPPLIES	Power supply treephase 220/240V-50/60Hz Power supply singlephase 220/240V - 50/60Hz	603020 603021	€ 67,00 € 140,00
PACKAGING	Pallet, shrink wrapping and protective oil (1000x600x1400h mm - 120 kg) Pallet, carboard and protective oil (1000x600x1450h mm - 130 kg) Protection with bag VCI	301892 602000	€ 57,00 € 108,00
SERVICES	Training at Rinaldi head office Installation, start up and training at customer's premises by staff		included
WARRANTY (standard warranty 12 months)	Included of: Telephone, fax and email assistance Repair or replacemento of defective parts at Rinaldi head office Delivery charges for machine or spare parts under guarantee period Traveling expenses of techincian during warranty period		includede included excluded excluded
<p>This price list supersedes all previous price lists. Technical data and prices can eventually vary without any notice. The prices herein indicated have to be considered vat free and ex works our warehouse if is not expressly specified.</p>			
Pag. 02 ► 20.1 - EN			

INT 30M

end milling machine

Rinaldi



code 500029

€ 4.190.00

► 20.1 - EN

DESCRIPTION

Horizontal end milling machine with manual feed. Performs milling at 90 ° and with variable angle from -45 ° to + 45 °. Scratch-proof work. Guarding of work zone with ample internal visibility.

FEATURES

- Worktop of steel with nickel treatment
- Forward movement on linear guides and recirculating ball bearings
- Motor brake
- Horizontal and vertical pneumatic clamps with low pressure device
- Length stop at six positions
- Pneumatic lubrication system with emulsionated oil
- Tool repository
- Chips conveyor

TECHNICAL DATAS	Power supplies threephase Threephase motor power Spindle speed Stroke axis X Clamp capacity (bxh) Maximum cutter diameter Milling angle Weight	380/400-50/60 1.1 2850 300 200x120 160 -45...+45 125	Volt - Hz kW r.p.m. mm mm ° kg
STANDARD EQUIPEMENT	Service spanners Use and maintenance manual and ce marking Cutter sleeve Ø27 / 32 L=135 mm (installed) Locking pin on cutter sleeve Adjustable leveling feets (installed) Air gun for cleaning (mounted)		
OPTIONS	Roller conveyor for supporting profiles L=150 mm Groups cutters design Consumables	603013	€ 146,00 ask quotation see page 77
SUPPLIES	Power supply treephase 220/240V - 50/60Hz Power supply singlephase 220/240V - 50/60Hz	603020 603021	€ 67,00 € 140,00
PACKAGING	Pallet, shrink wrapping and protective oil (1000x600x1400h mm - 130 kg) Pallet, carboard and protective oil (1000x600x1450h mm - 145 kg) Protection with bags VCI	301892 602000	€ 57,00 € 108,00 ask quotation
SERVICES	Training at Rinaldi head office		included ask quotation
WARRANTY (standard warranty 12 months)	Included of: Telephone, fax and email assistance Repair or replacemento of defective parts at Rinaldi head office Delivery charges for machine or spare parts under guarantee period Traveling expenses of techincian during warranty period		included included excluded
This price list supersedes all previous price lists. Technical data and prices can eventually vary without any notice. The prices herein indicated have to be considered vat free and ex works our warehouse if is not expressly specified.			
<p style="text-align: center;">Pag. 04 ► 20.1 - EN</p>			

INT 32

end milling machine

INT 32A**Rinaldi****code 500032**

€ 5.260.00

code 500033

€ 6.220.00

▶ **20.1 - EN****DESCRIPTION**

Horizontal end milling machine with manual feed or semiautomatic in the "32A". The 'high-speed spindle improves the quality of machining on painted profiles and at intermediate angles. Performs milling at 90 ° and with variable angle from -45 ° to + 45 °. Quick tool change with pneumatic control. Scratch-proof working area. Protection of the working zone with wide internal visibility.

FEATURES

- Worktop ground steel with nickel treatment
- Forward movement on linear guides and recirculating ball bearings
- Brake motor
- Horizontal and vertical pneumatic clamps with low pressure device
- Length stop at six positions
- Pneumatic lubrication system with emulsionated oil
- Tool repository
- Air cleaning system
- Chips conveyor
- Plug for swarf exhauster
- Rolling bench L=500 mm
- Locking system piece without approaching stroke
- Speed adjustment progress Oleopneumatic (32A version)

INT 32**INT 32A****Rinaldi**

TECHNICAL	Power supplies threephase Threephase motor power Spindle speed Stroke axis X Clamping capacity (bxh) Maximum cutter diameter Milling angle	380/400-50/60 1.5 6000 320 200x120 180 -45 ... +45	Volt - Hz kW r.p.m. mm mm mm °
STANDARD EQUIPEMET	Service spanners Use and maintenance manual and ce marking Cutter sleeve Ø27 / 32 L=160 mm (installed) Locking pin on cutter sleeve Extractor fan connection Ø70 mm Adjustable leveling feets (installed) Air gun for cleaning (installed)		
OPTIONS	Cutter heads Swarf exhauster model ASP 15 Consumables		ask quotation see page 71 see page 77
SUPPLIES	Power supply threephase 220/240V - 50/60Hz Power supply singlephase 220/240V - 50/60Hz	603020 603021	€ 67,00 € 140,00
PACKAGING	Pallet, shrink wrapping and protective oil (1250X700X1400h mm 185-195kg) Pallet, carboard and protective oil (1250x700x1450h mm 205-215kg)	301898 602001	€ 90,00 € 159,00
SERVICES	Training at Rinaldi head office		included ask quotation
WARRANTY (standard warranty 12 months)	Included of: Telephone, fax and email assistance Repair or replacemento of defective parts at Rinaldi head office Delivery charges for machine or spare parts under guarantee period Traveling expenses of techincian during warranty period		included included excluded
<small>This price list supersedes all previous price lists. Technical data and prices can eventually vary without any notice. The prices herein indicated have to be considered vat free and ex works our warehouse if is not expressly specified.</small>			
Pag. 06 ► 20.1 - EN			

INT 32S

end milling machine

INT 32AS**Rinaldi**

code 50036

€ 6.660.00

code 50034

€ 7.680.00

▶ 20.1 - EN

DESCRIPTION

Horizontal end milling machine with manual feed or semiautomatic in the "32AS". The 'high-speed spindle improves the quality of machining on painted profiles and at intermediate angles. Performs milling at 90 ° and with variable angle from -45 ° to + 45 °. Quick tool change with pneumatic control. Scratch-proof work. Protection of the working area with wide internal visibility.

FEATURES

- Worktop ground steel with nickel treatment
- Forward movement on linear guides and recirculating ball bearings
- Motor brake
- Horizontal and vertical pneumatic clamps with low pressure device
- Length stop at six positions
- Pneumatic lubrication system with emulsionated oil
- Tool repository
- Air cleaning system
- Chips conveyor
- Plug for swarf exhauster
- Rolling bench L=500 mm
- Locking system piece without approaching stroke
- Speed adjustment progress Oleopneumatic (32A version)

INT 32S**INT 32AS****Rinaldi**

TECHNICAL DATAS	Power supply threephase Power threephase motor Spindle speed Stroke axis X Clamping capacity (bxh) Maximum blade diameter Milling angle Weight (model 32S-32AS)	380/400-50/60 1.5 6000 320 200 x120 180 -45...+45 220 -230	Volt - Hz kW r.p.m. mm mm mm ° kg
STANDARD EQUIPEMENT	Service spanners Use and maintenance manual and ce marking Cutter sleeve Ø27/32 L=160 mm (installed) Locking pin on cutter sleeve Extractor fan connection Ø70 mm Sound proof tunnel L=1100 Adjustable leveling feets (installed) Air gun for cleaning (installed)		
OPTIONS	Cutter heads Swarf exhauster model ASP 15 Consumables		ask quotation see page 71 see page 77
SUPPLIES	Power supply threephase 220/240V-50/60Hz Power supply singlephase 220/240V-50/60Hz	603020	€ 67,00 € 140,00
PACKAGING	Pallet, shrink wrapping and protective oil(1250x1000x1450h mm 230-240kg) Pallet, carboard and protective oil (1250x1000x1400h mm 255-265kg)	301894 602003	€ 115,00 € 210,00
SERVICES	Training at Rinaldi head office Installation,start up and training at customer's premises by staff		included
WARRANTY (standard warranty 12 months)	Included of: Telephone, fax and email assistance Repair or replacemento of defective parts at Rinaldi head office Delevery charges for machine or spare parts under guarantee period Traveling expenses of techincian during warranty period		included included excluded

This price list supersedes all previous price lists. Technical data and prices can eventually vary without any notice. The prices herein indicated have to be considered vat free and ex works our warehouse if is not expressly specified.

INT 35

end milling machine

INT 35S**Rinaldi**

code 500039

€ 9.135.00

code 500041

€ 11.290.00

▶ 20.1 - EN

DESCRIPTION

Horizontal end milling machine with manual feed or automatic. The 'high-speed spindle improves the quality of machining on painted profiles and at intermediate angles. Performs milling at 90 ° and with variable angle from -45 ° to + 45 °. Quick tool change with pneumatic control. Scratch-proof work. Protection of the working zone with wide ample internal visibility Work area soundproofed and fully faired. The self-tilting indexing stop cancels contact between the stop and the workpiece during switchover. The version "35S" includes a tunnel soundproof pneumatic control (only milling at 90 °) which reduces the noise emitted at approximately 75 dB.

FEATURES

- Worktop ground steel with nickel treatment
- Forward movement on linear guides and recirculating ball bearings
- Depth stop auto-tilting
- Inverter-driven motor
- Horizontal and vertical pneumatic vise with dispositivo low pressure
- Depth stop turret 6 adjustable positions
- Tool lubrication pulse (neat oil)
- Speed adjustment progress Oleopneumatic
- Tool magazine
- Air gun blast for cleaning clamp
- Raccoglio shavings drawer pull
- Connection for swarf exhauster
- Profile support roller conveyor L=500 mm
- Locking system piece without approaching stroke
- Digital display LED display speed rotation tool
- Tunnel soundproof L = 1100 mm with foot door milling units (version 35S)

TECHNICAL DATAS	Power supply threephase Power threephase motor Spindle speed Stroke axis X Clamping capacity (bxh) Maximum cutter diameter Milling angle	380/400-50/60 2.2 4000...7000 350 240x120 200 -45...+45	Volt - Hz kW r.p.m. mm mm mm °
STANDARD EQUIPEMENT	Service spanners Use and maintenance manual and ce marking Cutter sleeve Ø27/32 L=160 mm (installed) Locking pin on cutter sleeve Extractor fan connection Ø70 mm Adjustable leveling feets (installed) Air gun for cleaning (installed)		
OPTIONS	Cutter heads Swarf exhauster model ASP 15 Consumables		ask quotation see page 71 see page 77
SUPPLIES	Power supply threephase 220/240V - 50/60Hz Tunnel L=2000 + rolling bench (35S) Tunnel L=3000 + rolling bench (35S)	603022 400750 400751	€ 280,00 € 1050,00 € 2100,00
PACKAGING	Pallet, shrink wrapping and protective oil (1250x700x1400h mm - 265 kg)(35) Pallet, carboard and protective oil(1250x700x1450h mm - 285 kg)(35) Pallet, shrink wrapping and protective oil (1250x1000x1400h mm - 305 kg) (35S) Pallet, carboard and protective oil(1250x1000x1450h mm - 325 kg) (35S) Protection with bags VCI	301898 602001 301894 302003	€ 90,00 € 159,00 € 115,00 € 210,00
SERVICES	Training at Rinaldi head office Installation,start up and training at customer's premises by staff		included
WARRANTY (standard warranty 12 months)	Included of: Telephone, fax and email assistance Repair or replacemento of defective parts at Rinaldi head office Delivery charges for machine or spare parts under guarantee period Traveling expenses oof techincian during warranty period		included included excluded

This price list supersedes all previous price lists. Technical data and prices can eventually vary without any notice. The prices herein indicated have to be considered vat free and ex works our warehouse if is not expressly specified.

BABY

end milling machine for rounded glazing bead

Rinaldi



rounded 45°

€ 1.525,00

rounded 90°

€ 1.575,00

frame 90°

€ 1.650,00

▶ 20.1 - EN

DESCRIPTION

Horizontal end milling machine with manual feed, ideal for manufacture of rounded glazing beads. The machine can cut the needed section for snapping in glazing beads, cut an angle of 45° or 90° on the shutter. The machine is tested for the customer's required set. Full protection of the working area.

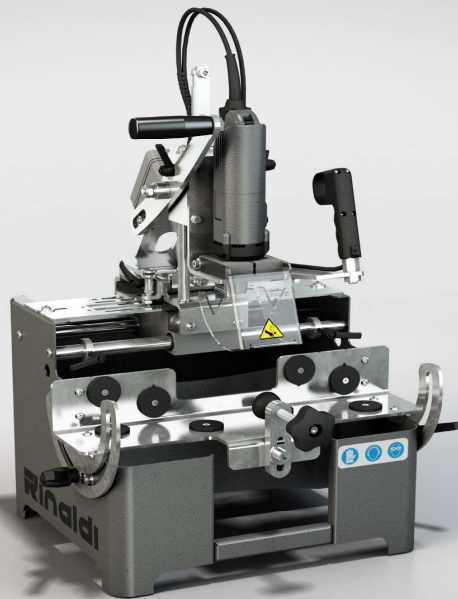
FEATURES

- Advancing movement on bars and ball bushings
- Vertical vice with pneumatic release
- Counterprofile PVC
- Adjustable depth stop

TECHNICAL DATAS	Power supplies treephase Power motor treephase Spindle speed Stroke axis X Maximum cutter diameter Weight	380/400-50/60 0.5 2850 140 100 25	Volt - Hz kW r.p.m. mm mm kg
STANDARD EQUIPEMET	Service spanners Use and maintenance manual and ce marking Oil spraytool lubrication 0,4 litre (neat oil) Milling cutters (installed) Counterprofile (installed) Air gun cleaning (installed)		
OPTIONS	Spray-mist lubrication system (oil emulsion) Millin cutters for different series/drawing Counterprofile for different series/drawing Consumables	400385	€ 158,00 ask quotation ask quotation see page 77
SUPPLIES	Power supply treephase 220/240V - 50/60Hz Power supply singlephase 220/240V - 50/60Hz	603020 603021	€ 67,00 € 140,00
PACKGING	Cardborad and protective oil (410X410X540h mm - 29 kg)	301908	included
SERVICES	Training at Rinaldi head office Installation,start-up training at customer's premises by staff		included ask quotation
WARRANTY (standard warranty 12 months)	Included of: Telephone, fax and email assistance Repair or replacemento of defective parts at Rinaldi head office Delivery charges for machine or spare parts under guarantee period Traveling expenses of techincian during warranty period		included included excluded
<p><small>This price list supersedes all previous price lists. Technical data and prices can eventually vary without any notice. The prices herein indicated have to be considered vat free and ex works our warehouse if is not expressly specified.</small></p>			
<p>Pag. 12 ► 20.1 - EN</p>			

PAN 22
copy router

Rinaldi



code 500293
€ 1.945,00

► 20.1 - EN

DESCRIPTION

Copy router manually controlled and portable, translation movement head with two levers. The system of rotation of the clamp allows to quickly turn the piece of 90 °and any all intermediate angle without unlocking the piece. This device speeds up and allows a more precise machining to be carried out on two sides of the piece. Two feelers manually operated.

FEATURES

Forward movement on guides and recirculating ball bearings
High quality engine "made in Germany"
1 horizontal manual clamp
2 adjustable length stop
Adjustable mechanical stops

TECHNICAL DATAS	Power supply singlephase Power motor Spindle speed X-Y- Z axis stroke Clamping capacity (bxh) Maximum cutter diameter Diameter probe tips	220/240-50/60 0.85 29000 220 -100 -120 110 x110 5 5	Volt - Hz kW r.p.m. mm mm mm
STANDARD EQUIPEMENT	Service spanners Use and maintenance manual and ce marking HSS MILLING CUTTER Ø5 L=68 mm Collet •8 mm Nut Lenght stops support L= 1000 mm Standard template (installed) Adjustable supports (installed)		
OPTIONS	Mask without figures Excludable lenght stop Support rod jokes L= 1000 mm Customized template Consumables	203360 400056 200326	€ 32,00 € 29,00 € 30,00 ask quotation see page 77
SUPPLIES	Carboard and protective oil(600x500x650h mm - 40 kg) Protection with VCI bag	602058	€ 38,00 included
SERVICES	Training at Rinaldi head office Installation,start-up and training at customer's premises by staff	included ask quotation	
WARRANT (standard warranty 12 months)	Included of: Telephone, fax and email assistance Repair or replacemento of defective parts at Rinaldi head office Delivery charges for machine or spare parts under guarantee period Traveling expenses of techincian during warranty period	included included excluded	

This price list supersedes all previous price lists. Technical data and prices can eventually vary without any notice. The prices herein indicated have to be considered vat free and ex works our warehouse if is not expressly specified.

PAN 26
copy router

Rinaldi



code 500242
€ 3.300,00

▶ 20.1 - EN

DESCRIPTION

Pantograph manually controlled, translation movement of the head with indirect lever. Possibility to perform work without turning the piece. Probe manually operated.

FEATURES

- Forward movement on guides and recirculating ball bearings
- Motor protection circuit breaker
- 2 Pneumatic clamps equipped with low pressure device
- Adjustable depth stop
- Adjustable stops on metric lines
- Spray lubrication device
- Feeler with 3 different diameters

<p>TECHNICAL DATAS</p>	<p>Power supply threephase Power motor threephase Spindle speed X-Y-Z axis stroke Clamping capacity (bxh) Maximum cutter sleeve Diameter probe tips Weight</p>	<p>380/400-50/60 0.75 12000 260-120-130 150x200 10 6-8-10 110</p>	<p>Volt - Hz kW r.p.m. mm mm mm mm kg</p>
<p>STANDARD EQUIPEMENT</p>	<p>Service spanners Use and maintenance manual and ce marking HSS MILLING CUTTER Ø6 L=68 mm HSS MILLING CUTTER Ø8 L=80 mm ER collet16 Ø8...7 mm Hexagonal ring nut ER16 Supporting rods for depth stops L=1000 mm 2 Excludable stops Standard template (installed) Adjustable leveling feets (installed) Air gun for cleaning (installed)</p>		
<p>OPTIONS</p>	<p>Rolling conveyor for supporting profilesL=600 mm Rolling conveyor for supporting profiles L=1200 mm Customized template Excludable stops Supporting rods for depth stops L=1000 mm Copy template with shapes on drawing Consumables</p>	<p>603012 603011 203361 400056 200326</p>	<p>€ 184,00 € 393,00 € 38,00 € 29,00 € 30,00 ask quotation see page 77</p>
<p>SUPPLIES</p>	<p>Power supply threephase 220/240V - 50/60Hz Power supply singlephase 220/240V - 50/60Hz</p>	<p>603020 603021</p>	<p>€ 67,00 € 140,00</p>
<p>PACKGING</p>	<p>Pallet, shrink wrapping and protective oil (850x750x1350h mm - 115 kg) Pallet , carboard and protective oil (850x750x1500h mm - 130 kg) Protection with bag VCI</p>	<p>301896 602005</p>	<p>€ 63,00 € 121,00</p>
<p>SERVICES</p>	<p>Training at Rinaldi head office Installation,start-up and training at customer's premises by staff</p>	<p>included</p>	
<p>WARRANT (standard warranty 12 months)</p>	<p>Included of: Telephone, fax and email assistance Repair or replacemento of defective parts at Rinaldi head office Delivery charges for machine or spare parts under guarantee period Traveling expenses of techincian during warranty period</p>	<p>included included excluded</p>	

This price list supersedes all previous price lists. Technical data and prices can eventually vary without any notice. The prices herein indicated have to be considered vat free and ex works our warehouse if is not expressly specified

PAN 31

copy router

Rinaldi



code 500098

€ 4.380.00

▶ 20.1 - EN

DESCRIPTION

Pantograph manually controlled single, translation movement head with indirect lever and large vertical travel. Ability to perform work without turning the piece. Probe manually operated.

FEATURES

- Movement axes of bars and bushings Ball
- 2 horizontal pneumatic clamps with low pressure device
- Depth stop turret with 6 adjustable positions
- Without referring to the longitudinal and transverse rods metric
- Tool lubrication pneumatic mist (emulsified oil)
- Probe tip in axis with the tool to 3 diameters

TECHNICAL DATAS	Power supplies treephase Power motor treephase Spindle speed X-Y -Z axis stroke Clamping capacity (bxh) Maximum cutter diameter Diameter probe tips Weight	380/400-50/60 0.75 12000 310-120-175 175x230 10 5-8-10 125	Volt - Hz kW r.p.m. mm mm mm kg
STANDARD EQUIPEMENT	Service spanners Use and maintenance manual and ce marking HSS milling cutter Ø6 L=68 mm HSS milling cutter Ø8 L=80 mm ER16 collet Ø8...7 mm Hexagonal nut ER16 2 supporting rods for depth stops L=1000 mm 4 Excludable stops Standard template (installed) Adjustable leveling feet (installed) Air gun for cleaning (installed)		
OPTIONS	Probe stylus with pneumatic control Rolling conveyor for supporting profiles L=600 mm Rolling conveyor for supporting profiles L=1200 mm Plain template Excludable stops Customized template Consumables	400704 603012 603011 200542 400056	€ 153,00 € 184,00 € 393,00 € 38,00 € 29,00 ask quotation see page 77
SUPPLIES	Power supply treephase 220/240V-50/60Hz Power supply singlephase 220/240V-50/60Hz	603020 603021	€ 67,00 € 140,00
PACKGING	Pallet, shrink wrapping and protective oil (850x750x1400h mm - 130 kg) Pallet , carboard and protective oil (850x750x1400hmm - 145 kg)	301896 602005	€ 63,00 € 121,00
SERVICES	Training at Rinaldi head office Installation,start-up and training at customer's premises by staff		included
WARRANT (standard warrant 12 months)	Include of: Telephone, fax and email assistance Repair or replacemento of defective parts at Rinaldi head office Delivery charges for machine or spare parts under guarantee period Traveling expenses of techincian during warranty period		included included excluded

This price list supersedes all previous price lists. Technical data and prices can eventually vary without any notice. The prices herein indicated have to be considered vat free and ex works our warehouse if is not expressly specified.

PAN 31C

copy router with 3 spindle drilling unit

Rinaldi



code 50011

€ 6.850.00

► 20.1 - EN

DESCRIPTION

Pantograph manually controlled single, translation movement head with indirect lever and large vertical travel. Equipped with a drilling unit 3 tips for working Cremonese avanzamneto to semiautomatic processing of PVC reinforced steel. Possibility of going through machining without turning the piece. Probe manually operated.

FEATURES

- Movement axes on bars and bushings Ball
- 2 Horizontal pneumatic clamps with low pressure device
- Adjustable depth stop
- Without referring to the longitudinal and transverse rods metric
- Tool lubrication pneumatic mist (emulsified oil)
- Probe tip in axis with the tool 3 diametrii
- Speed adjustment progress drilling units Oleopneumatic
- Catch profondità drilling unit
- Digital indicator center height

TECHNICAL DATAS	Power supplies treephase Power motor treephase Spindle speed X-Y-Z axis stroke Clamping capacity (b x h) Maximum cutter diameter Diameter probe tips Power motor tips treephase Spindle speed tips Wheelbase tips Center height adjustable Weight	380/400-50/60 0.75 12000 310-120-175 175x230 10 5-8-10 1.1 900 21.5 15...65 185	Volt - Hz kW r.p.m. mm mm mm kW r.p.m. mm mm kg
STANDARD EQUIPEMENT	Service spanners Use and maintenance manual and ce marking HSS milling cutter Ø5 L= 68 mm HSS milling cutter Ø10 L= 95 mm ER16 collet Ø10...9 mm Hexagonal nut ER16 2 Supporting rods for depth stops L=1000 mm 4 Excludable stops Agjustable leveling feets (installed) Standard template (installed) Air gun for cleaning (installed) 3 Tips Cremonese holes (excluded)		see page 77
OPTIONS	Probe stylus with pneumatic control Rolling conveyor for supporting profiles L= 600 mm Rolling conveyor for supporting profiles L=12000 mm Copy template without shapes Excludable stop Copy template with shapes on drawing Consumables	400704 603012 603011 200542 400056	€ 146,00 € 184,00 € 393,00 € 38,00 € 29,00 ask quotation see page 77
SUPPLIES	Power supply treephase 220/240V-50/60Hz Power supply singlephase 220/240V-50/60 Hz	603023 603034	€ 140,00 € 280,00
PACKAGING	Pallet, shrink wrapping and protective oil (1050x1050x1400h mm - 210 kg) Pallet , cardboard and protective oil (1050x1050x1650h mm - 220 kg) Protection with bag VCI	301905 602007	€ 115,00 € 222,00 ask quotation
SERVICES	Training at Rinaldi head office Installation, start-up and training at customer's premises by staff		included
WARRANTY (standard warranty 12 months)	Included of: Telephone, fax and email assistance Repair or replacement of defective parts at Rinaldi head office Delivery charges for machine or spare parts under guarantee period Traveling expenses of technician during guarantee period		included included excluded

This price list supersedes all previous price lists. Technical data and prices can eventually vary without any notice. The prices herein indicated have to be considered vat free and ex works our warehouse if is not expressly specified

PAN 36

copy router

Rinaldi



code 500101

€ 7.550.00

► 20.1 - EN

DESCRIPTION Pantograph manually controlled single, pneumatic locking movement of descent and head traversing through indirect lever. The system of rotation of the clamp allows to quickly turn the piece of 90 ° without releasing the clamps. This device makes it faster and more accurate processing to be carried out on two sides of the piece. By making you work through machining up to 4 faces without lead by the piece. The pneumatic stylus with 6 memories, adjustable, allows fast and accurate machine.

FEATURES

- Movement axes on bars and bushings Ball
- Morse 2 horizontal pneumatic clamps with low pressure device
- Unlocking descent comado tire on grip
- Without referring to the longitudinal and transverse rods metric
- Adjustable depth stop
- Tool lubrication pneumatic mist (emulsified oil)
- Probe tip axis with tool to 3 diameters
- Spindle locking push button for tool change
- Vise jaws PVC adjustable without use of keys
- Probe traverse pneumatic

TECHNICAL DATAS	Power supplies treephase Power motor treephase 2 Spindle speed X-Y-Z axis stroke Clamping capacity(bxh) Tilting clamp table Maximum cutter diameter Diameter probe tips	380/400-50/60 0.35/0.45 6000/12000 360 -120-175 200x200 0/90 10 5- 8-10	Volt - Hz kW r.p.m. mm mm ° mm mm
STANDARD EQUIPEMENT	Service spanners Use and maintenance manual and ce marking HSS milling cutter Ø5 L= 68 mm HSS milling cutter Ø10 L= 95 mm ER16 collet Ø10...9 mm Hexagonal nut ER 16 2 Supporting rods for depth stops L=1500 mm 4 Excludable stops Mask with figures for the lock (installed) Standard template (installed) Jaw central processing short profiles (installed) 2 Rolling conveyor for supporting profiles L=500 mm Adjustable leveling feets (installed) Air gun for cleaning (installed)		
OPTIONS	Copy template without shapes Excludable stops Lubrification tool pulse (neat oil) Customized Copy template Consumables	200543 400056 400526	€ 38,00 € 29,00 € 812,00 ask quotation see page 77
SUPPLIES	Power supply treephase 220/240V-50/60Hz	603023	€ 140,00
PACKAGING	Pallet,shrink wrapping and protective oil (1050x1050x1550h mm - 200 kg) Pallet , cardboard and protective oil (1050x1050x1650h mm - 225 kg)	301905 602007	€ 115,00 € 222,00
SERVICES	Training at Rinaldi head office Installation,start-up and training at customer's premises by staff		included
WARRANTY (standadr warranty 12 months)	Included of: Telephone , fax and email assistance Repair or replacemento of defective parts at Rinaldi head office Delivery charges for machine or spare parts under guarantee period Traveling expenses of techincian during warranty period		included included excluded

This price list supersedes all previous price lists. Technical data and prices can eventually vary without any notice. The prices herein indicated have to be considered vat free and ex works our warehouse if is not expressly specified.

PAN 40

copy router

PAN 40I

Rinaldi



code 500111

€ 10.080.00

code 500119

€ 11.320.00

▶ **20.1 - EN**

DESCRIPTION

Pantograph manually controlled single, with semiautomatic lowering device for rapid approach and skipping chambers. Ability to cut steel up to 3 mm with standard equipment; in the "40I" with specific accessory also stainless steel up to 2 mm. Spindle speed adjustable in the "40I" with electronic inverter for improved quality machining and tool life. Ability to run through machining of aluminum without turning the workpiece. Worktop scratchproof. Probe pneumatic control on handle.

FEATURES

- Movements down on bars and bushings Ball
- Translational movement of guides and recirculating ball bearings
- Morse 2 horizontal and 2 vertical clamps with low pressure device
- Depth stop pneumatic and mechanic
- Fermi longitudinal and transverse refer to auctions metrics
- Tool lubrication by pneumatic mist (emulsified oil)
- Stylus tip in axis with the tool to 3 diameters
- Descending movement controlled by buttons on the handles
- Spindle locking push button for tool change
- Jaw vertically adjustable in height without use of keys
- Oleopneumatic speed adjustment
- Speed adjustment progress down Oleopneumatic
- Spindle motor 2 speed (model 40)
- Spindle motor driven by an inverter (model 40I)
- Display Digital LED speed display rotation tool (model 40I)

PAN 40**PAN 40I****Rinaldi**

TECHNICAL DATAS	Power supplies treephase Power motor treephase (model 40) 2 Spindle speed (model 40) Power motor treephase (model 40I) Spindle speed adjustable (model 40I) X-Y-Z axis stroke Clamping capacity (b x h) Maximum cutter diameter Diameter probe tips Weight	380/400-50/60 0.35/0.55 3500/12000 1.1 1000...12000 400-150-200 200x240 12 5-8-10 350	Volt - Hz kW r.p.m. kW r.p.m. mm mm mm mm kg
STANDARD EQUIPEMENT	Service spanners Use and maintainance manual and ce marking HSS milling cutter Ø5 L= 68 mm HSS milling cutter Ø10 L= 95 mm ER20 collet Ø6...5, Ø8...7 e Ø10...9 mm Hexagonal nut ER20 2 Supporting rods for depth stops L=1000 mm 4 Excludable stops 2 Rolling conveyor for supporting profiles L=800 mm Mask with figures for the lock (installed) Adjustable leveling feets (installed) Air gun for cleaning (installed)		
OPTIONS	Copy template without shapes Lubrification tool pulse(neat oil) Tool cooling -10 ° for machining stainless steel (model 40I) Excludable stops Customized Copy template Consumables	200537 400526 603025	€ 38,00 € 812,00 € 1.815,00 € 29,00 ask quotation see page 77
SUPPLIES	Power supply treephase 220/240V-50/60Hz (model 40) Power supply treephase 220/240V-50/60Hz(model 40I)	603021 603022	€ 140,00 € 280,00
PACKAGING	Pallet, shrink wrapping and protective oil (1050x1050x1500h mm - 375 kg) Pallet , cardboard and protective oil (1050x1050x1650h mm - 385 kg) Protection with plenty VCI	301905 602007	€ 115,00 € 222,00
SERVICES	Training at Rinaldi head office Training at the customer site (duration 4 hours)		included
WARRANTY (standard warranty 12 months)	Included of: Telephone, fax and email assistance Repair or replacemento of defective parts at Rinaldi head office Delivery charges for machine or spare parts under guarantee period Traveling expenses of techincian during warranty period		included included excluded
<p>This price list supersedes all previous price lists. Technical data and prices can eventually vary without any notice. The prices herein indicated have to be considered vat free and ex works our warehouse if is not expressly specified.</p>			
Pag. 24 ▶ 20.1 - EN			

PAN 38I

copy router

Rinaldi



code 500112

€ 13.870.00

► 20.1 - EN

DESCRIPTION

Pantograph manually controlled single, pneumatic locking head down and translation movement through indirect lever. Ability to cut steel up to 3 mm with standard equipment; with specific accessory stainless steel up to 2 mm. Spindle rotation speed adjustable with electronic variator to improve the quality of milling and the tool life. Probe with 6 adjustable memories allows fast and accurate machine. The system of rotation of the clamp (patented) allows you to work 4 faces of the profile without unlocking the clamps. The rotation movement from 0 ° to 180 ° maintains the same axis; Figure produced on the first face at 0 ° is at the same height of the one reproduced on the opposite face at 180 °. This system allows to increase the processing speed and accuracy, use utensils length of less, eliminating through machining thus reduce vibration and noise. Front protection zone work pneumatic.

FEATURES

- Movement down on bars and bushings Ball
- Translational movement of guides and recirculating ball bearings
- Morse 2 horizontal and 2 vertical clamps with low pressure device
- Depth stop regolibile
- Fermi longitudinal and transverse refer on auctions metrics
- Tool lubrication pneumatic mist (emulsified oil)
- Stylus tip in axis with the tool to 3 diameters
- Unlocking down head with pneumatic control
- Spindle locking push button for tool change
- Vise jaws pvc adjustable using keys
- Display Digital LED speed display rotation tool
- Spindle motor driven by an inverter
- Probe traverse pneumatic

TECHNICAL DATAS	Power supplies treephase Power motor treephase Spindle speed adjustable X-Y-Z axis stroke Clamping capacity (bxh) Maximum cutter diameter Diameter probe tips Weight	380/400-50/60 1.1 1000...12000 360-150-140 150x100 12 5-8-10 400	Volt - Hz kW r.p.m. mm mm mm mm kg
STANDARD EQUIPEMENT	Service spanners Use and maintenance manual and ce marking HSS milling cutter Ø5 L= 68 mm HSS milling cutter Ø10 L= 95 mm ER20 collet Ø6...5, Ø8...7 e Ø10...9 mm Hexagonal nut ER 20 4 Excludable stops 2 Rolling conveyor for supporting profiles L=500 mm Central jaw for working short profiles (installed) 2 Supporting rods for depth stops L=1500 mm Mask with figures standard Mask with figures for the lock (installed) Adjustable leveling feets (installed) Air gun for cleaning (installed)		
OPTIONS	Copy template without shapes Lubrication tool pulse (neat oil) Tool cooling -10° for machining stainless steel Excludable stops Copy template with shapes on drawing Consumables	200537 400526 603025 400056	€ 38,00 € 812,00 €1.815,00 € 29,00 ask quotation see page 77
SUPPLIES	Power supply treephase 220/240V-50/60Hz	603022	€ 280,00
PACKAGING	Pallet, shrink wrapping and protective oil (1300x1000x1400h mm - 425 kg) Pallet , cardboard and protective oil (1300x1000x1450h mm - 435 kg) Protection with plenty VCI	301890 602009	€ 121,00 € 235,00
SERVICES	Training at Rinaldi head office Training at the customer site (duration 4 hours)		included
WARRANTY (standard warranty 12 months)	Included of: Telephone, fax and email assistance Repair or replacemento of defective parts at Rinaldi head office Delivery charges for machine or spare parts under guarantee period Traveling expenses of techincian during warranty period		included included excluded

This price list supersedes all previous price lists. Technical data and prices can eventually vary without any notice. The prices herein indicated have to be considered vat free and ex works our warehouse if is not expressly specified.

PAN 38L

copy router

PAN 38LI**Rinaldi**

code 500113

€ 18.420.00

code 500114

€ 20.770.00

▶ 20.1 - EN

DESCRIPTION

Manual single-head pantograph on a base of length 3000 mm, with mobile unit manually and pneumatically locked. Semiautomatic shift down with head device for rapid approach and skipping chambers. Quick tool change with pneumatic control (optional). Possibility to work steel up to 2 mm with standard equipment; with specific accessory stainless steel up to 1.5 mm. Pneumatic stylus with pneumatic traverse to 5 adjustable positions allows fast and accurate machine. The system of rotation of the clamp allows working 3 faces of the profile without unlocking the clamps or performing through machining 4 sides. The rotary movement from 0 ° to 180 ° maintains the same axis; Figure produced on the first face at 0 ° is at the same height of the one reproduced on the opposite face at 180 °. This system allows to increase the processing speed and accuracy, use tools of length less then reduce vibration and noise. Protection front work area controlled tire.

FEATURES

- Down head movement and carriage of bars and bushings Ball
- Translational movement of the head guides and recirculating ball bearings
- Morse 4 horizontal and vertical clamps with low pressure device
- Depth stop tire
- Fermi longitudinal and transverse refer on auctions metrics
- Tool lubrication pneumatic mist (emulsified oil)
- Pure oil lubrication device (neat oil) (model 38LI)
- Stylus tip in axis with the tool to 3 diameters
- Down head movement controlled by buttons on the handles
- Spindle locking push button for tool change
- Vise jaws pvc adjustable using keys
- Adjusting feed speed descent head Oleopneumatic
- Stylus with pneumatic traverse
- Spindle motor 2 speed (model 38L)
- Spindle motor driven by an inverter (model 38LI)
- Display Digital LED speed display rotation tool (model 38LI)

Pag. 27 ▶ 20.1 - EN

PAN 38L

PAN 38LI

Rinaldi

TECHNICAL DATAS	Power supplies treephase Power motor treephase (model 38L) 2 Spindle speed (model 38L) Power motor treephase(model 38LI) Spindle speed adjustable (model 38LI) X-Y-Z axis stroke Clamping capacity (bxh) Tilt the clamp Maximum cutter diameter Diameter probe tips Weight	380/400-50/60 0.35/0.55 3500/1200 1.1 1000...12000 2500 -150-250 140x110 0/90/180 12 5-8-10 680	Volt - Hz kW r.p.m. kW r.p.m. mm mm ° mm mm kg
STANDARD EQUIPEMENT	Service spanners Use and maintenance manual and ce marking HSS milling cutter Ø5 L= 68 mm HSS milling cutter Ø10 L= 95 mm ER20 collet Ø6...5, Ø8...7 mm e Ø10...9 mm Hexagonal nut ER 20 (model 38L) ER20 collet tool holder + hexagonal nut (clamp excluded) (model 38LI) 6 Fermi tank (installed) Mask with figures for the lock Mask with figures for the lock (installed) Figures mask with zipper Mask with figures for cremonese hole spacing 21.5 mm 2 Excludable stops Agjustable leveling feets (installed) Air gun for cleaning (installed)		
OPTIONS	Copy template without shapes Pure oil lubrication device (neat oil) Tool cooling -10° for machining stailless steel (model 38LI) Excludable stops Toolholder + ER20 nut Hex. (clamp excluded)(model 38LI) Tool holder WELDON Ø6 mm (model 38LI) Tool holder WELDON Ø8 mm (model 38LI) Tool holder WELDON Ø10 mm (model 38LI) Fermo wagon Fermo 5 position transverse Copy template with shapes on drawing Consumables	200537 400526 603025 400056 400040 400039 400038 400037 400048 400047	€ 38,00 € 812,00 €1.815,00 € 29,00 € 115,00 € 76,00 € 76,00 € 76,00 € 32,00 € 134,00 ask quotation see page 77
SUPPLIES	Power supply treephase 220/240V-50/60Hz	603022	€ 280,00
PACKAGING	Shrink and protective oil(3300x950x1400h mm - 680 kg)	602005	€ 115,00
SERVICES	Training at Rinaldi head office Training at the customer site (duration 4 hours)		included
WARRANTY (standard warranty 12 months)	Included of: Telephone, fax and email assistance Repair or replacemento of defective parts at Rinaldi head office Develing charges for machine or spare parts under warranty period Traveling expenses of techincian during warranty period		included included excluded

This price list supersedes all previous price lists. Technical data and prices can eventually vary without any notice. The prices herein indicated have to be considered vat free and ex works our warehouse if is not expressly specified.

FOR 16

single-head drilling machine 2 spindles

Rinaldi



code 500187

€ 3.360,00

► 20.1 - EN

DESCRIPTION

Single-head drilling machine, manual feed and 2 spindles with variable interaxis. Adjustable mobile tip handwheel. Clamp base adjustable along the Y axis, with possibility of memorizing 6 positions, fast setup.

FEATURES

Advancing movement on bars and recirculating ball bushings
Horizontal pneumatic clamp with low pressure device
Adjustable depth stop
Tool lubrication by pneumatic mist (emulsified oil)

TECHNICAL DATAS	Power supplies treephase Power motor treephase Spindle speed Z axis stroke Clamping capacity (bxh) Shank diameter tip with plan Wheelbase adjustable spindles	380/400-50/60 0.75 2500 100 120x160 12 28...160	Volt - Hz kW r.p.m. mm mm mm mm
STANDARD EQUIPEMENT	Service spanners Use and maintenance manual and ce marking 2 Punta Ø6 HSS 2 / 11.5 to 90 ° + 0 tang ø12x30 plan 4 Excludable stops Support rod jokes L=1000 mm Adjustable leveling feets (installed) Air gun for cleaning (installed)		
OPTIONS	Right and left roller support profile with support L=1200 mm Excludable stops Drills of different types Consumables	603009 400056	€ 698,00 € 29,00 ask quotation see page 77
SUPPLIES	Power supply treephase 220/240V-50/60Hz	603020	€ 67,00
PACKAGING	Pallet, shrink and protective oil (1000x600x1350h mm - 115 kg) Pallet , cardboard and protective oil (1000x600x1450h mm - 120 kg) Protection with bag VCI	301892 602000	€ 57,00 € 108,00 ask quotation
SERVICES	Training at Rinaldi head office	included	
WARRANTY (standard warranty 12 months)	Included of: Telephone, fax and email assistance Repair or replacemento of defective parts at Rinaldi head office Develing charges for machine or spare parts under guarantee period Traveling expenses of techincian during warranty period	included included excluded	
<small>This price list supersedes all previous price lists. Technical data and prices can eventually vary without any notice. The prices herein indicated have to be considered vat free and ex works our warehouse if is not expressly specified.</small>			
<p align="center">Pag. 30 ► 20.1 - EN</p>			

FOR 18P

single-head drilling machine 2 spindles

Rinaldi



code 500188

€ 4.695.00

▶ 20.1 - EN

DESCRIPTION

Semiautomatic advance of the head with 2 spindles with variable interaxis. Pneumatic movement of the tip cabinet with possibility to store two wheelbases. Device for quick approach for automatically detecting the height profile. The adjustable clamps close crosswise the Y axis, with 6 memory positions assuring a fast set up.

FEATURES

Movement of the tip on bars and bushings Ball
Horizontal pneumatic clamp with low pressure device
Adjustable depth stop
Tool lubrication pneumatic mist (emulsified oil)
Adjustable forward speed hydropneumatic

TECHNICAL DATAS	Power supplies threephase Power motor threephase Spindle speed Z axis stroke Clamping capacity (bxh) Shank diameter tip with plan Wheelbase adjustable spindles	380/400-50/60 1.1 2250 150 120x230 12 25...180	Volt - Hz kW r.p.m. mm mm mm mm
STANDARD EQUIPEMENT	Service spanners Use and maintenance manual and ce marking 2 Punta HSS Ø6/11.5 a 90°+0 L=120 tang Ø12x30 plan 4 Excludable stops Support rod jokes L=1000 mm Adjustable leveling feets (included) Air gun for cleaning (installed)		
OPTIONS	Right and left roller support profile with foot L=1200 mm Excludable stops Drills of different types Consumables	603009 400056	€ 698,00 € 29,00 ask quotation see page 77
SUPPLIES	Power supply threephase 220/240V-50/60Hz	603020	€ 67,00
PACKAGING	Pallet, shrink and protective oil (850x600x1550h mm - 135 kg) Pallet , cardboard and protective oil (850x600x1600h mm - 145 kg) Protection with bag VCI	301902 602004	€ 57,00 € 108,00
SERVICES	Training at Rinaldi head office		included
WARRANTY (standard warranty 12 months)	Included: Telephone, fax and email assistance Repair or replacement of defective parts at Rinaldi head office Delivery charges for machine or spare parts under warranty period Traveling expenses of technician during warranty period		included included excluded excluded
<p>This price list supersedes all previous price lists. Technical data and prices can eventually vary without any notice. The prices herein indicated have to be considered vat free and ex works our warehouse if is not expressly specified.</p>			
Pag. 32 ► 20.1 - EN			

FOR 22D FOR 23D FOR 33D

multiple-head drilling machine with 2 spindles

Rinaldi



code 500184

€ 11.480.00

code 500185

€ 12.750.00

code 500186

€ 17.060.00

▶ 20.1 - EN

DESCRIPTION

Multihead drilling head with pneumatic locking. Each head moves down semiautomatically and can be activated separately. Each head has 2 spindles with variable pneumatic movement of the tip cabinet with possibility to store two wheelbases and device for quick approach, automatically detecting the height of the profile. Adjustable clamps on axis Y, with memory at 6 positions for fast placement. The version "22D" and "23D" have 2 heads and stand length 2000 and 3000 mm respectively, the "33D" has 3 heads and stand length 3000 mm.

On customer demand can be realized units with different number of heads and different legths

FEATURES

Movement on bars and bushings Ball
Horizontal pneumatic clamp with low pressure device
Mechanical depth stops
Tool lubrication pneumatic mist (emulsified oil)
Hydropneumatic adjustable forward speed
Sliding control panel

<p>TECHNICAL DATAS</p>	<p>Power supply threephase Power motor threephase Spindle speed Z axis stroke Clamping capacity (bxh) Shank diameter tip Wheelbase adjustable spindles Length base</p>	<p>380/400-50/60 1.1 2250 150 120x230 12 25...180 2000-3000</p>	<p>Volt - Hz kW r.p.m. mm mm mm mm mm</p>
<p>STANDARD EQUIPEMENT</p>	<p>Service spanners Use and maintenance manual and ce marking 2 Excludable stops 4/6 Punta HSS Ø 6/11.5 a 90°+0 L= 120 tang Ø12x30 plan 2 Supporting rods for depth stops L=1000 mm Adjustable leveling feets (included) Air gun for cleaning (installed)</p>		
<p>OPTIONS</p>	<p>Excludable stops Drills of different types Consumables</p>	<p>400056</p>	<p>€ 29,00 ask quotation see page 77</p>
<p>SUPPLIES</p>	<p>Power supply threephase 220/240V-50/60Hz</p>	<p>603033</p>	<p>€ 209,00</p>
<p>PACKAGING</p>	<p>Shrink and protective oil (2000-3000x900x1450h mm - 400 - 520 - 600 kg) Protection with bag VCI</p>	<p>602005</p>	<p>€ 121,00 ask quotation</p>
<p>SERVICES</p>	<p>Training at Rinaldi head office Installation, start-up and training at customer's premises by staff</p>		<p>included ask quotation</p>
<p>WARRANTY (standard warranty 12 months)</p>	<p>Included: Telephone, fax and email assistance Repair or replacemento of defective parts at Rinaldi head office Delivery charges for machine or spare parts under warranty period Traveling expenses of techincian during warranty period</p>		<p>included included excluded excluded</p>
<p><small>This price list supersedes all previous price lists. Technical data and prices can eventually vary without any notice. The prices herein indicated have to be considered vat free and ex works our warehouse if is not expressly specified.</small></p>			
<p>Pag. 34 ► 20.1 - EN</p>			

MUL 46R

single-head milling machine

Rinaldi



code 500095

€ 4.950.00

▶ 20.1 - EN

DESCRIPTION

Manually drilling-head-down with 6 spindles designed to drill the holes required to mount the hinges of heavy type in one single operation (blocking sash and frame together). The quick-change system speeds up the placement of the tips for the holes of hinges in two wings to be executed both on right and left side. Possibility to vary the spacing of the holes between the door and frame and store 6 different positions.

NOTE: Specify the order code the spacer (see equipment)

FEATURES

Horizontal pneumatic clamp with low pressure device
Clamp base with revolver at 6 positions. Adjustable centering frame.
Adjustable depth stop
Tool lubrication by pneumatic mist (emulsified oil)

TECHNICAL DATAS	Power supplies treephase Power motor treephase Spindle speed Z axis stroke Clamping capacity (bxh) Shank diameter tip with plan Wheelbase adjustable hinge	380/400-50/60 1.1 2400 100 195x140 10 48...110 120	Volt - Hz kW r.p.m. mm mm mm mm
STANDARD EQUIPEMENT	Service spanners Use and maintenance manual and ce marking Spacer front wheelbase drilling to be chosen (installed) Spacer rear wheelbase drilling to be chosen (installed) 4 Excludable stops Supporting rods for depth stops L=1000 mm Adjustable leveling feets(installed) Air gun for cleaning (installed) 6 Tips (excluded)		see accessories see accessories see page 77
OPTIONS	Right and left roller support profile with foot L=1200 mm Excludable stops Spacer front wheelbase drilling 22mm Spacer front wheelbase drilling 22.5mm Spacer front wheelbase drilling 23mm Spacer front wheelbase drilling 22-28-22-28-22mm Spacer front wheelbase drilling 22-27-22-27-22mm Spacer front wheelbase drilling 22.5-28-22.5-28-22.5mm Spacer front wheelbase drilling 34-21-34-21-34mm Spacer front wheelbase drilling 22-20.5-22-20.5-22mm Spacer front wheelbase drilling 23-22-23-22-23mm Spacer front to cernieradiversa (specify distances) Spacer front to rear hinge different (specify distances) Drills of different types Consumables	603009 400056 201549 203032 202493 202481 202892 203031 202926 202478 202492	€ 698,00 € 29,00 € 76,00 € 76,00 € 76,00 € 102,00 € 102,00 € 102,00 € 102,00 € 102,00 € 102,00 ask quotation ask quotation ask quotation see page 77
SUPPLIES	Power supply treephase 220/240V-50/60Hz	603020	€ 67,00
PACKAGING	Pallet, shrink and protective oil (1000x600x1400h mm - 135 kg) Pallet, cardboard and protective oil (1000x600x1450h mm - 140 kg)	301892 602000	€ 57,00 € 108,00
SERVICES	Training at Rinaldi head office Installation, start-up and training at customer's premises by staff		included
WARRANTY (standard warranty 12 months)	Included of: Telephone, fax and email assistance Repair or replacemento of defective parts at Rinaldi head office Delivery charges for machine or spare parts under warranty period Traveling expenses of techincian during guarantee period		included included excluded

This price list supersedes all previous price lists. Technical data and prices can eventually vary without any notice. The prices herein indicated have to be considered vat free and ex works our warehouse if is not expressly specified.

TMA 42 TMA 42A TMA 42AD

miter saw single-head rising

Rinaldi



code 500245

€ 5.230,00

code 500246

€ 5.775,00

code 500320

€ 5.800,00

▶ 20.1 - EN

DESCRIPTION

Cutting off machine with ascending large cutting capacity. Blade manually or semiautomatically moved in the "42A". Adjustable 0 point to increase the cutting capacity; cutting angle of up to 15 ° right and left with three fixed positions -45 °, 0 °, + 45 ° for quick placement. Safe working area by accident prevention side tunnel .

FEATURES

- Worktop ground steel
- Upward movement of the blade and angles of guides and recirculating balls
- Motor protection circuit breaker
- 2 vertical pneumatic clamps with low pressure device
- Tool lubrication by pneumatic mist (emulsified oil)
- Hydropneumatic speed adjustment (version "42A")
- Drawer pull chips
- Provision for connection to pneumatic horizontal
- Provision for connection to roller loading and unloading
- Provision for connection to fume extraction

<p>TECHNICAL DATAS</p>	<p>Power supplies treephase Power motor treephase Speed rotating blade Diameter blade Vertical fence adjustable Tilt adjustable blade Weight (model 42-42A)</p>	<p>380/400-50/60 1.5 3100 420 0...100 -15...+15 230</p>	<p>Volt - Hz kW r.p.m. mm mm ° kg</p>
<p>STANDARD EQUIPEMET</p>	<p>Service spanners Use and maintenance manual and ce marking Blade with carbide teeth HM Ø420 mm (installed) 2 Tunnel accident prevention side L = 800 mm Attack suction mouth Ø70 mm Adjustable leveling feet (installed) Air gun for cleaning (installed)</p>		
<p>OPTIONS</p>	<p>Horizontal pneumatic vice Loading roller: RIS 22-44-66 Unloading roller: RIS 20M-40M-17V-40V-60V-40E-60E Industrial vacuum wheeled model ASP 15 Consumables</p>	<p>400713</p>	<p>€ 286,00 see page 61 see page 63-69 see page 71 see page 77</p>
<p>SUPPLIES</p>	<p>Power supply treephase 220/240V-50/60Hz Power supply singlephase 220/240V-50/60Hz</p>	<p>603020 603021</p>	<p>€ 67,00 € 140,00</p>
<p>PACKAGING</p>	<p>Pallet, shrink and protective oil (800x770x1850h mm - 235 kg) Pallet , cardboard and protective oil (870x770x1800h mm - 250 kg) Protection with bag VCI</p>	<p>602031 602030</p>	<p>€ 63,00 € 115,00</p>
<p>SERVICES</p>	<p>Training at Rinaldi head office Installation, start-up and training at customer's premises by staff</p>		<p>included</p>
<p>WARRANTY (standard warranty 12 months)</p>	<p>Included of: Telephone, fax and email assistance Repair or replacement of defective parts at Rinaldi head office Delivery charges for machine or spare parts under warranty period Traveling expenses of technician during warranty period</p>		<p>included included excluded</p>

This price list supersedes all previous price lists. Technical data and prices can eventually vary without any notice. The prices herein indicated have to be considered vat free and ex works our warehouse if is not expressly specified.

TMA 60A TMA 60AC

miter saw single-head rising

Rinaldi



code 500296

€ 14.020,00

codice 500323

€ 15.230,00

▶ 20.1 - EN

DESCRIPTION

Cutting off machine with ascending large cutting capacity with semiautomatic blade advancement. Vertical fence adjustable in two positions to increase the capacity of cutting; cutting angle of up to 15 ° right and left with three fixed positions -45 °, 0 °, + 45 ° for quick placement. Cutting area guard, with lateral tunnel accident prevention. The "60AC" version provides the opening / closing pneumatic protection.

FEATURES

- Steel worktop
- Upward movement of the blade and on guides with recirculating balls
- Morse 2 horizontal and 2 vertical clamps with low pressure device
- Adjusting cylinder pressure horizontal and vertical clamps
- Tool lubrication pneumatic mist (emulsified oil)
- Adjust forward speed hydropneumatic
- Provision for connection to roller loading and unloading
- Provision rear for connection to chip extraction mouth Ø 100 mm
- Motor protection switch with the thermal magnetic
- Blade with chip removal and preparation conveyed bottom connection
- Suction nozzle chips Ø 100 mm

TECHNICAL DATAS	Power supplies treephase Power motor treephase Speed rotating blade Diameter blade Adjustable vertical fence Tilt adjustable blade Weight	380/400-50/60 5.5 2850 600 0/180 -15...+15 500	Volt - Hz kW r.p.m. mm mm ° kg
STANDARD EQUIPEMENT	Service spanners Use and maintenance manual and ce marking Blade with carbide teeth HM Ø600 mm (installed) Adjustable leveling feets (installed) Air gun for cleaning (installed) 2 Safety side tunnel L=500 mm		
OPTIONS	Tool lubrication by pulses (pure oil) Electronic blade tilt display Loading roller: RIS 22-44-66 Unloading roller: RIS 20M-40M-17V-40V-60V-40E-60E Industrial vacuum wheeled model ASP 22 - ASP 40 Consumables	400965 400901	€ 1.125,00 € 790,00 see page 61 see page 63-69 see page 71 see page 77
SUPPLIES	Power supply treephase 220/240V-50/60Hz	303198	€ 67,00
PACKAGING	Pallet, shrink and protective oil (1450x1350x1800h mm - 550 kg) Protection with bag VCI	602036	€ 121,00 ask quotation
SERVIZI	Training at Rinaldi head office Installation, start-up and training at customer's premises by staff		included ask quotation
WARRANTY (standard warranty 12 months)	Included of: Telephone, fax and email assistance Repair or replacement of defective parts at Rinaldi head office Delivery charges for machine or spare parts under warranty period Traveling expenses of techincian during warranty period		included included excluded
<p>This price list supersedes all previous price lists. Technical data and prices can eventually vary without any notice. The prices herein indicated have to be considered vat free and ex works our warehouse if is not expressly specified.</p>			
Pag. 40 ► 20.1 - EN			

TMF 55A

miter saw single-head rising

Rinaldi



code 500320

€ 13.330.00

▶ 20.1 - EN

DESCRIPTION

Single head sawing machine with a large cutting capacity with semiautomatic blade advancement. Tilting head with electronic control by servomotor with three quick buttons -45 ° 90 ° + 45 ° angles of cut, contact and left up to 20 ° with positioning electronic. Cutting area guard pneumatically controlled.

FEATURES

- Worktop ground steel
- Forward movement of the blade guides and recirculating ball bearings
- Rotational movement of the blade with pair of tapered bearings
- Start cutting cycle with two-handed safety device
- 2 horizontal pneumatic clamps with low pressure device
- Tool lubrication penumatica in mist (emulsified oil)
- Speed adjustment progress Oleopneumatic
- Drawer pull chips
- Provision for connection to chip extraction mouth Ø100 mm
- Digital display LED display tilt head

TECHNICAL DATAS	Power supplies treephase Power motor treephase Speed rotating Diameter blade Tilt adjustable blade Weight	380/400-50/60 2.2 2850 550 -20...+20 500	Volt - Hz kW r.p.m. mm ° kg
STANDARD EQUIPEMENT	Service spanners Use and maintenance manual and ce marking Blade with carbide teeth HM Ø550 mm (installed) Adjustable leveling feets (installed) Air gun for cleaning (installed)		
OPTIONS	Vertical pneumatic vise Tool lubrication pneumatic pulse (neat oil) Loading roller: RIS 22-44-66 Unloading roller: RIS 20M-40M-17V-40V-60V-40E-60E Industrial vacuum wheeled model ASP 15 Consumables	400701 400526	€ 390,00 € 812,00 see page 61 see page 63-69 see page 71 see page 77
SUPPLIES	Power supply treephase 220/240V-50/60Hz	603020	€ 67,00
PACKAGING	Pallet, shrink and protective oil (1600x800x1600h mm - 530 kg) Protection with bag VCI	602024	€ 155,00 ask quotation
SERVICES	Training at Rinaldi head office Training at the customer site (duration 4 hours)		included € 445,00+TR
WARRANTY (standard warranty 12 months)	Included of: Telephone, fax and email assistance Repair or replacemento of defective parts at Rinaldi head office Delivery charges for machine or spare parts under warranty period Traveling expenses of techincian during warranty period		included included excluded
This price list supersedes all previous price lists. Technical data and prices can eventually vary without any notice. The prices herein indicated have to be considered vat free and ex works our warehouse if is not expressly specified.			
Pag. 42 ► 20.1 - EN			

RIF 35

Trimming machine

Rinaldi



code 500332

€ 3.100,00

▶ 20.1 - EN

DESCRIPTION

Trimming machine designed for trimming aluminum and PVC profiles. Adjusting the blade rise and full blade protection, with internal visibility, place the highest level of safety for the operator. It is equipped with a pneumatic lubrication of blade with system by micro-fog. The wide working surface of steel is treated with electrolytically ground steel smooth and rustproof.

FEATURES

- Motor protection circuit breaker
- Brake motor with operating time < 7 sec
- Direct blade motor without transmission
- 4 passes gaskets

TECNICAL DATAS	Power supplies threephase Power motor threephase Speed rotation Max. blade height Diameter blade Weight	380/400-50/60 1.5 2850 100 350 150	Volt-Hz kW giri/min. mm mm kg
STANDARD EQUIPEMENT	Service spanners Use e maintenance manual and ce marking Blade Ø350 d. 30 S.3,4 Z=96 (installed) Adjustable leveling feets (installed)		
OPTIONS	Rolling conveyor for supporting profiles L=1200mm	603069	€ 385,00
PACKAGING	Pallet, shrink wrapping and protective oil (1250x700x1400h mm 175 kg) Pallet, carboard and protective oil (1250x700x1250h mm 165 kg)	301898 602001	€ 90,00 € 159,00
WARRANTY (standard warranty 12 months)	Included of: Telephone, fax and email assistance Repair or replacemento of defective parts at Rinaldi head office Delivery charges for machine or spare parts under warranty period Traveling expenses of techincian during warranty period	included included excluded excluded	
This price list supersedes all previous price lists. Technical data and prices can eventually vary without any notice. The prices herein indicated have to be considered vat free and ex works our warehouse if is not expressly specified.			
<p style="text-align: center;">Pag. 44 ► 20.1 - EN</p>			

**TMA60A +
ALIMENTATORE**

**TMA60E+
ALIMENTATORE**

Cutting line with ascending single-head cutting-off machine

Rinaldi



code 500329

€ 45.000,00

code 500326

€ 55.000,00

▶ 20.1 - EN

DESCRIPTION

Fully automatic cutting line . Adjustable 0 point to increase the cutting capacity; manually adjusted rotation on the version "60A" and automatic on "60E". Safety side protection tunnels . The bar feeder is automatic and managed by a servomotor and position detecting by magnetic. LCD display and input of the cutting list by keyboard, USB stick or RJ45 (optional). Maximum length of the bar is 7000 mm.

FEATURES

- Steel worktop
- Blade stroke on linear guides and recirculating ball runner blocks
- 2 horizontal and 2 vertical pneumatic clamps with low pressure device
- Adjustable clamps pressure
- Spray lubrication device
- Hydropneumatic feed speed adjustment
- Predisposition for loading and unloading benches connections
- Predisposition for swarf exhauster Ø100 mm
- Motor protection with magnetothermal switch
- Blade with conveyed chip evacuation and lower connection predisposition
- Swarf suction mouth Ø100 mm
- Reference stop transmission on rack with inclined teeth
- Steel rollers coated on bearings
- Cutting list storage
- Cutting lists imported from USB or RJ45 (optional)
- Predisposition for bar code reader

TMA60A+

ALIMENTATORE

TMA60E+

ALIMENTATORE

Rinaldi

TECNICAL DATAS	Three phase power supply Three-phase motor power Blade rotation speed Blade diameter Adjustable 0 POINT Adjustable blade inclination Bar positioning accuracy Weight	380/400-50/60 5.5 2850 600 0...180 -15...+15 +/- 0.1 1000	Volt - Hz kW giri/min. mm mm ° mm kg
STANDARD EQUIPEMENT	Service key envelope Use and maintenance manual with CE declaration Blade with HM teeth Ø600 mm (mounted) 2 side accident prevention tunnels L = 500 mm Adjustable leveling feet (mounted) Air blow gun for cleaning (mounted)		
OPTIONS	Pulse tool lubrication 2 nozzles (pure oil) Electric blade inclination display ("60A" version) Loading roller conveyor: RIS 22-44-66 Unloading roller conveyor: RIS 20M-40M-17V-40V-60V-70E Wheeled industrial vacuum cleaner version ASP 22 - ASP 40 Consumables	400965 400901	€ 1.125,00 € 790,00 see page 61 see page 63-69 see page 71 see page 77
SUPPLIES	Three-phase 220/240V-50/60Hz power supply	303198	€ 67,00
PACKAGING	Pallet, shrink wrap and protective oil (1450x1350x1800h mm - 550 kg) Protection with VCI bag	602036	€ 395,00 ask quotation
SERVIZI	Training at Rinaldi headquarters Installation, start-up and customer training		including ask quotation
GARANZIA (durata 12 mesi)	Including: Telephone, email and fax support Repair or replacement of defective parts at Rinaldi headquarters Shipping costs for machinery or spare parts during the warranty period Technical travel expenses during the warranty period		including including excluded
<p>This price list supersedes all previous price lists. Technical data and prices can eventually vary without any notice. The prices herein indicated have to be considered vat free and ex works our warehouse if is not expressly specified.</p>			
Pag. 46 ► 20.1 - IT			

TDF 55P

double-head cut-off machine

Rinaldi



code 500586 4 m
€ 40.250.00

code 500287 T.U. 5 m
€ 42.050.00

▶ 20.1 - EN

DESCRIPTION

Twin-front miter saw with semiautomatic movement of the mobile head managed by numerical control, tilt heads externally by pneumatic control with two fixed positions 90 ° and 45 °; all inclinations up to 22.5 ° made by mechanical stop. Oleopneumatic blade feed with inclination of 15 °. Front fairing with chip tray; protected cutting area, ascending, pneumatic control. Foldable profile support roller conveyor connected to the moving . Available in two cutting lengths useful: TU 4 m or T.U. 5 m.

FEATURES

- Movement head on slideways and recirculating ball bearings
- Blade feed rails and recirculating ball bearings
- Motorization moving head with numerical control brushless motor
- Measuring system moving head with encoder on the brushless motor
- Transmission moving head with rack and pinion tilted teeth
- Start cutting cycle with two-handed safety device
- 2 horizontal and 2 vertical clamps with low pressure device
- Tool lubrication pneumatic mist (emulsified oil)
- Adjusting speed of the blade Oleopneumatic
- Control with graphic display 240 x 128 and keyboard
- Predisposition to connect chip extraction mouth Ø100 mm
- Predisposition autostart vacuum mod. ASP 22
- Predisposition for printer labels
- Movable Control panel
- USB 2.0 port on the control panel and ethernet RJ45 socket
- CNC with ARM microprocessor
- Wide VGA display (800 x 480) color 7" - touch screen
- Managing cutting lists loaded from USB or Ethernet RJ45
- Software GUI easy touch screen
- Run single cut
- Running cutting undersized, beyond measure, popped and wedge
- Running cutting step and incremental
- Execution of macro programs
- 2 Drawers collect shavings

TECHNICAL DATAS	Power supply threephase Power motor blade threephase Speed rotating blade Diameter blade Speed placement head Cutting helpful (according model) Minimum denomination 45°-90° / 22.5° Tilt adjustable head outside Weight (T.U.4 m - T.U. 5 m)	380/400-50/60 2.2 2850 550 25 4000 -5000 200 / 300 90...22.5 1750-1900	Volt - Hz kW r.p.m. mm m/min. mm mm ° kg
STANDARD EQUIPEMENT	Service spanners Use and maintenance manual and ce marking 2 Blade with carbide teeth HM Ø550 mm (installed) Adjustable leveling feet (installed) Air gun for cleanig (installed)		
OPTIONS	Electronic gauge height profiles Central roller retractable controlled pneumatic Central roller controlled manually Label printer with the program and support Tool lubrication pneumatic implusi (neat oil) Industrial vacuum wheeled ASP version 22 Consumables	400911 603052 400912 603054 400753	€ 1.460,00 € 952,00 € 530,00 € 2.092,00 € 1.628,00 see page 71 see page 77
SUPPLIES	Power supply treephase 220/240V - 50/60Hz Cutting different useful	603033	€ 209,00 ask quotation
PACKAGING	Shrink and protective oil (5870x1500x1550h mm - 1750 kg)(T.U.4m) Shrink and protective oil(6970x1500x1550h mm - 1900 kg)(T.U.5m) Pallet, shrink and protective oil (6070x1700x1700h mm)(T.U.4m) Pallet, shrink and protective oil (7170x1700x1700h mm)(T.U.5m) Protection with bag VCI	602041 602042 602039 602040	€ 134,00 € 134,00 ask quotation ask quotation ask quotation
SERVICES	Training at Rinaldi head office Installation, start-up and training at customer (Italy) (8 hours)	included € 825,00 + TR	
WARRANTY (standard warranty 12 months)	Included: Telephone, fax and email assistance Repair or replacemento of defective parts at Rinaldi head office Delivery charges for machine or spare parts under warranty period Traveling expenses of techincian during guarantee period	included included excluded excluded	
<small>This price list supersedes all previous price lists. Technical data and prices can eventually vary without any notice. The prices herein indicated have to be considered vat free and ex works our warehouse if is not expressly specified.</small>			
<p align="center">Pag. 48 ► 20.1 - EN</p>			

TDF 55R

double-head cut-off machine

Rinaldi



code 500288 T.U. 4 m code 500289 T.U. 5 m
€ 42.850.00 € 44.940.00

► 20.1 - EN

DESCRIPTION

Twin-front miter saw with semiautomatic movement of the mobile head managed by numerical control, external and internal tilt head with pneumatic control with two fixed positions 90 ° and 45 °; all graduations from 135 ° to 22.5 ° with a mechanical. Oleo-pneumatic blade feed with inclination of 15 °. Front fairing with chip tray; protection Cutting area, ascending, pneumatic control. Profile support roller conveyor connected to the moving head that is compacted inside the fairing. Available in two cutting lengths useful: TU 4 m or T.U. 5 m.

FEATURES

- Movement head on slideways and recirculating ball bearings
- Blade feed rails and recirculating ball bearings
- Motorization moving head with numerical control brushless motor
- Measuring system moving head with encoder on the brushless motor
- Tilt blade pneumatic
- Transmission moving head with rack and pinion tilted teeth
- Start cutting cycle with two-handed safety device
- Morse 2 horizontal and 2 vertical clamps with low pressure device
- Horizontal vice support cut profile of roller support profile
- Tool lubrication pneumatic mist (emulsified oil)
- Adjusting the speed of the blade Oleopneumatic
- Predisposition to attack chip extraction mouth Ø100 mm
- Predisposition autostart vacuum mod. ASP 22
- Predisposition printer labels
- Console commands in the mobile sliding rails and recirculating ball bearings
- USB 2.0 port on the control panel and ethernet RJ45 socket
- CNC with ARM microprocessor
- Wide VGA display (800 x 480) color 7" - touch screen
- Managing cutting lists loaded from USB or Ethernet RJ45
- Software GUI easy touch screen
- Running cutting undersized, beyond measure, popped and wedge
- Running cutting step and incremental
- 2 Drawers collect shavings

Pag. 49 ► 20.1 - EN

TECHNICAL DATAS	Power supplies threephase Power motor blade threephase Speed rotating blade Diameter blade Speed placement head Cutting range (according model) Minimum denomination 135°-90° -45° Tilt adjustable head outside Tilt adjustable internal head Weight (T.U.4 m - T.U.5m)	380/400-50/60 2.2 2850 550 25 4000-5000 650-360-400 90...22.5 90...135 1750-1900	Volt - Hz kW r.p.m. mm m/min. mm mm ° ° kg
STANDARD EQUIPEMENT	Service spanners Use and maintenance manual and ce marking 2 Blade with carbide teeth HM Ø550 mm (installed) Adjustable leveling feet (installed) Air gun for cleaning (installed)		
OPTIONS	Electronic gauge measuring height profile Central roller retractable controlled pneumatic Central roller controlled manually Label printer Tool lubrication pneumatic pulses (neat oil) Industrial vacuum wheeled ASP version 22 Consumables	400911 603052 400912 603054 400753	€ 1.460,00 € 952,00 € 530,00 € 2.092,00 € 1.628,00 see page 71 see page 77
SUPPLIES	Power supply threephase 220/240V-50/60Hz Cutting different useful	603033	€ 209,00 ask quotation
PACKAGING	Shrink and protective oil (5870x1500x1550h mm - 1750 kg) (T.U.4m) Shrink and protective oil (6970x1500x1550h mm - 1950 kg) (T.U.5m) Pallet, shrink and protective oil (6070x1700x1700h mm) (T.U.4m) Pallet, shrink and protective oil (7170x1700x1700h mm) (T.U.5m) Protection with bag VCI	602041 602042 602039 602040	€ 134,00 € 134,00 ask quotation ask quotation ask quotation
SERVICES	Training at Rinaldi head office Training at the customer site (Italy)(8 hours)	included € 825,00+TR	
WARRANTY (standard warranty 12 months)	Included: Telephone, fax and email assistance Repair or replacement of defective parts at Rinaldi head office Delivery charges for machine or spare parts under guarantee period Traveling expenses of technician during guarantee period	included included excluded excluded	
<small>This price list supersedes all previous price lists. Technical data and prices can eventually vary without any notice. The prices herein indicated have to be considered vat free and ex works our warehouse if is not expressly specified.</small>			
<p align="center">Pag. 50 ► 20.1 - EN</p>			

TDF 55E

double-head cut-off machine

Rinaldi



code 500290 T.U. 4 m code 500291 T.U. 5 m
€ 49.670.00 € 51.400.00

▶ 20.1 - EN

DESCRIPTION

Twin-front miter saw with semiautomatic movement of the mobile head inclination external and internal head from 22.5 ° to 135 ° and all gradations electronically controlled by CNC. Oleo-pneumatic blade feed with inclination of 15 °. Front fairing with chip tray; protection Cutting area, ascending, pneumatic control. Profile support roller conveyor connected to the moving head that is compacted inside the fairing. Available in two cutting lengths useful: TU 4 m or T.U. 5 m.

FEATURES

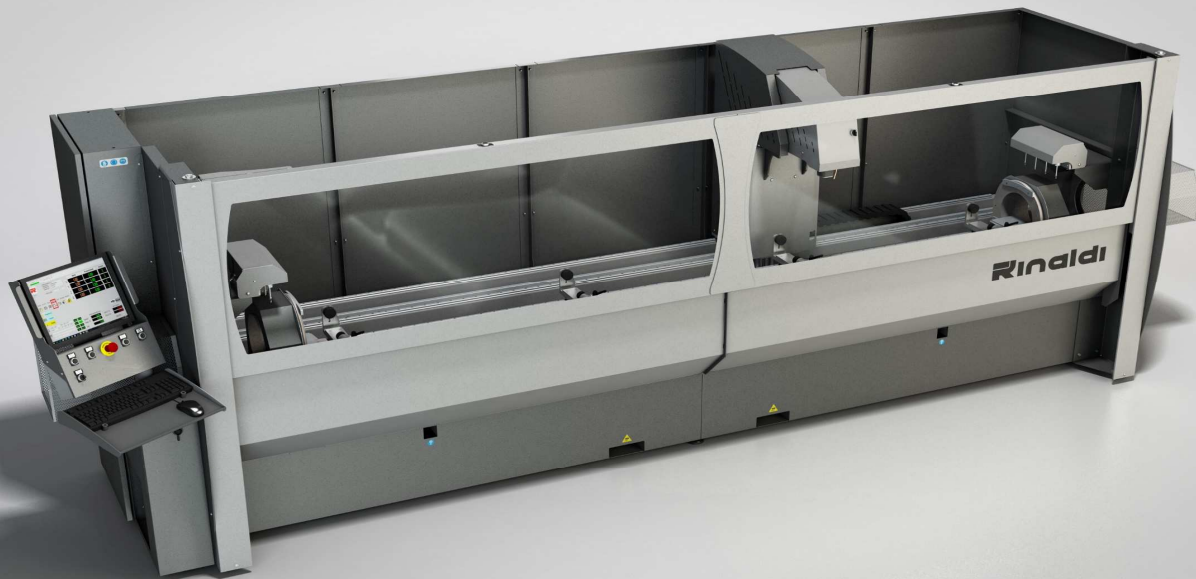
- Movement head on slideways and recirculating ball bearings
- Blade feed rails and recirculating ball bearings
- Motorization moving head with numerical control brushless motor
- Measuring system of brushless motor with encoder
- Motorization tilt blade CNC with stepper motor
- Measuring system tilt head with magnetic stripe
- Transmission moving head with rack and pinion tilted teeth
- Start cutting cycle with two-handed safety device
- 2 horizontal and 2 vertical pneumatic clamps with low pressure device
- Horizontal vice support cut profile of roller support profile
- Tool lubrication pneumatic pulse (neat oil)
- Adjusting the speed of the blade Oleopneumatic
- Predisposition to attack chip extraction mouth Ø100 mm
- Predisposition autostart vacuum ASP version 22
- Predisposition printer labels
- Control panel movable sliding on guides and recirculating balls
- USB 2.0 port on console commands and ethernet RJ45 socket
- NC - Industrial PC with Intel microprocessor
- VGA display (800 x 600) color 10.4 "- touch screen
- Operating system Windows XP Embedded RT
- Software Windows-based GUI easy touch screen
- Managing cutting lists loaded from USB or Ethernet RJ45
- Run single cut
- Running cutting undersized, beyond measure, popped and wedge
- Running cutting step and incremental
- Execution of macro programs

TECHNICAL DATAS	Power supplies threephase Power motor threephase Speed rotating blade Diameter blade Speed placement head Cutting helpful (according model) Minimum denomination 135°-90° / 22.5° Tilt adjustable head outside Tilt adjustable internal head	380/400-50/60 2.2 2850 550 25 4000-5000 200/300 90...22.5 90...135	Volt - Hz kW r.p.m. mm m/min. mm mm ° °
STANDARD EQUIPEMENT	Service spanners Use and maintenance manual and ce marking 2 Blade with carbide teeth HM Ø550 mm (installed) Adjustable leveling feet (installed) Air gun for cleaning (installed)		
OPTIONS	Electronic gauge measuring height profile Central roller retractable controlled pneumatic Central roller controlled manually Label printer with the program and support Industrial vacuum wheeled ASP version 22 Consumables	400911 603052 400912 400754 	€ 1.460,00 € 952,00 € 530,00 € 2.092,00 see page 71 see page 77
SUPPLIES	Power supply threephase 220/240V-50/60Hz Cutting different materials	603033	€ 209,00 ask quotation
PACKAGING	Shrink and protective oil (5870x1500x1550h mm - 1750 kg) (T.U.4m) Shrink and protective oil (6970x1500x1550h mm - 1950 kg) (T.U.5m) Pallet, shrink and protective oil (6070x1700x1700h mm) (T.U.4m) Pallet, shrink and protective oil (7170x1700x1700h mm) (T.U.5m) Protection with bag VCI	602041 602042 602039 602040	€ 134,00 € 134,00 ask quotation ask quotation ask quotation
SERVICES	Training at Rinaldi head office Training at the customer site (Italy)(8 hours)		included € 825,00+TR
WARRANTY (standard warranty)	Included of: Telephone, fax and email assistance Repair or replacement of defective parts at Rinaldi head office Delivery charges for machine or spare parts under guarantee period Traveling expenses of technician during guarantee period		included included excluded excluded

This price list supersedes all previous price lists. Technical data and prices can eventually vary without any notice. The prices herein indicated have to be considered vat free and ex works our warehouse if is not expressly specified.

CDL 33Q

working center

**CDL 33Q with
electrospindle****Rinaldi****code 500299****€ 59.450,00****code 500330****€ 64.050,00****▶ 20.1 - EN****DESCRIPTION**

Working center with moving vertical spindle 4 axis controlled by CNC including rotation of the clamp base continuously which allows any angle ranging from -90° to $+90^{\circ}$. Automatic working cycle. Side profile with integral chip tray; sliding protection front door pneumatically controlled. Quick change hand tool cone ISO30 pneumatically controlled; automatic tool change with the warehouse to 5 position in option. Locking piece with 4 pneumatic vices with manual positioning, unlocking tire option. Possibility to work aluminum, PVC, steel up to 4 mm and stainless steel up to 3 mm with a specific accessory.

FEATURES

- Axis movement and clamps rails and recirculating ball bearings
- Motion rotation clamp base rail and wheels
- Motorizzazioni numerically controlled axes with 4 brushless motors
- Transmission axis with rack and pinion tilted teeth
- Start cycle with two-handed safety device
- 4 horizontal pneumatic clamps with low pressure device
- Tool lubrication pneumatic mist (emulsified oil)
- Pneumatic reference stop on left side
- Tool magazine cones ISO30 at 5 positions
- Vise jaws PVC adjustable using keys
- Spindle motor driven by an inverter
- Console swiveling
- USB 2.0 port on the control panel and ethernet RJ45 socket
- Predisposition for barcode reader
- NC - Industrial PC with Intel microprocessor
- LCD display - TFT (800 x 600) color 10.4" - touch screen
- Operating system Windows XP Embedded RT
- Software graphically facilitated
- Indication vice positioning software with reference on metric line
- Performing work beyond measure with 2 reference stops (optional)

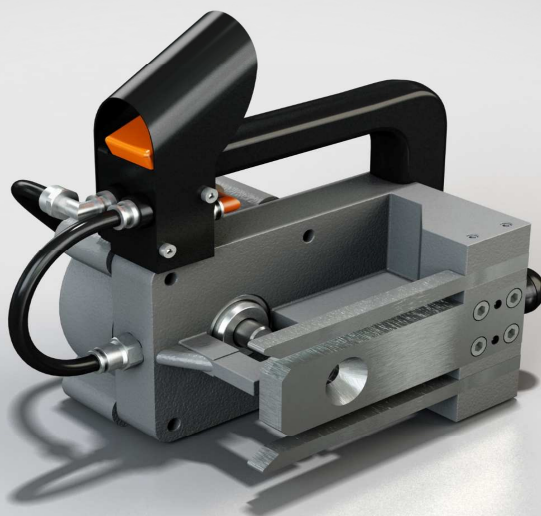
Pag. 53 ▶ 20.1 - EN

CDL 33Q**CDL 33Q with
electrospindle****Rinaldi**

TECHNICAL DATAS	Power supplies threephase + neutral Spindle drive phase Spindle speed adjustable Axis stroke X-Y-Z Speed positioning axis X- Y-Z Tilt axis adjustable clamp base Time rotation axis from 0 ... 90 ° Tolerance positioning axes Capacity vice (bxh) Diameter cutter Maximum diameter blade Weight	380/400-50/60 2.2 1000...12000 3300 -250-200 65-25-25 -90°...+90° 2 +/- 0.1 160x120 10 140 1850	Volt - Hz kW r.p.m. mm m/min ° sec mm mm mm kg
STANDARD EQUIPEMENT	Service spanners Use and maintenance manual and ce marking 4 Jaws grip PVC H=25 mm, 4 jaws grip PVC H=75 mm HM single-edged cutter Ø6 L=60, Ø8 L=80, Ø10 L=100 mm ER16 collet Ø6...5, Ø8...7 e Ø10...9 mm 2 Tool holder taper ISO30 ER16 mini L=50 + nut (clamp excluded) Adjustable leveling feets (included)		
OPTIONS	S1 spindle power 5.5 kW 2000-20000 rev / min. Positioning and automatic locking clamps 4 units Pneumatic locking 4 clamps 1 manual locking vise 1 pneumatic clamping vise 1 vise locking and automatic positioning Pneumatic stop on right side Tool magazine 4 places right side Barcode reader with wire and software Tunnel torque L = 500 Top Cover complete with windows and two mouths D.100 fume Extraction License CAD / CAM software HICAM 3 dimensional USB Key additional USB Key for office PC (not used simultaneously) Additional license CAD / CAM three-dimensional HICAM 3 with USB Key Annual maintenance fee for one software license HICAM 3 Consumables	400900 400854 400855 400856 400858 302586 400859 400860 302101 400880 400944 606003 603002 603004	€ 2.720,00 € 906,50 € 1.270,00 € 545,00 € 1.872,00 € 496,00 € 605,00 € 2.450,00 € 175,00 € 515,00 € 975,00 € 250,00 € 1.630,00 € 121,00 see page 77
SUPPLIES	Power supply threephase 220/240V-50/60Hz	603032	€ 370,00
PACKAGING	Shrink and protective oil (3800x1100x1950h mm - 1850 kg) Pallet, shrink and protective oil (4000x1250x2200h mm - 1900 kg) Protection with bag VCI	602045 602047	€ 200,00 ask quotation ask quotation
SERVICES	Training at Rinaldi head office (8 hours) Installation, start-up and training at customer's premises by staff (8 hours) Additional day in a row at the customer site		€ 570,00 € 825,00+TR € 760,00
WARRANTY (standard warranty)	Included: Telephone, fax and email assistance Repair or replacement of defective parts at Rinaldi head office Delivery charges for machine or spare parts under guarantee period Traveling expenses of technician during guarantee period		included included excluded excluded
<small>This price list supersedes all previous price lists. Technical data and prices can eventually vary without any notice. The prices herein indicated have to be considered vat free and ex works our warehouse if is not expressly specified.</small>			
Pag. 54 ▶ 20.1 - EN			

PNEUFOR
punching machine

Rinaldi



code 500148 excluding core and die

€ 350.00

▶ 20.1 - EN

DESCRIPTION

Punching portable pneumatically operated for the execution of the hole necessary for the assembly of the brackets corner connection; a 'further execution, to a different depth, allows the passage key draw bracket.

FEATURES

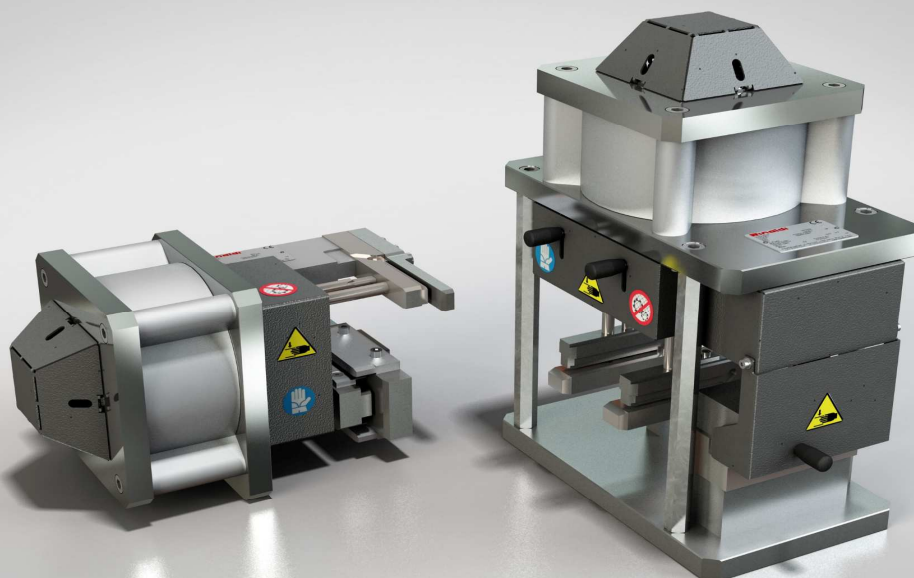
Matrix in special steel with hardening treatment
Punch in special steel with slanted cut
Adjustable depth stop
Drive with pneumatic button

TECHNICAL DATAS	Compressed air supply Working pressure Thrust force Maximum stroke Weight	8 6 420 15 4.5	bar bar kg mm kg
STANDARD EQUIPEMENT	Manual and maintenance with an EC declaration Pneumatic valve with security protection		
OPTIONS	Spray 0.4 liters neat oil Matrix for different set / a drawing Punch for different series / a drawing Consumables	301437	€ 15,00 ask quotation ask quotation see page 77
PACKAGING	Cardboard and protective oil (340x240x240h mm - 5 kg) Protection with bag VCI	301920	compreso ask quotation
SERVICES	Training at Rinaldi head office		included
WARRANTY (standard warranty 12 months)	Included of: Telephone, fax and email assistance Repair or replacement of defective parts at Rinaldi head office Delivery charges for machine or spare parts under guarantee period Traveling expenses of technician during guarantee period		included included excluded excluded
<p><small>This price list supersedes all previous price lists. Technical data and prices can eventually vary without any notice. The prices herein indicated have to be considered vat free and ex works our warehouse if is not expressly specified.</small></p>			
<p>Pag. 56 ► 20.1 - EN</p>			

PNEUFOR 12

punching machine

Rinaldi



code 500298 horizontal code 500297 vertical
€ 700,00 excluded stations € 850,00 excluded stations

▶ 20.1 - EN

DESCRIPTION Punching designed specifically for processing profiles for windows and doors, sliding shutters, facades and balconies. On request you can have the machining / stations excludable quickly. The version can be horizontal or vertical.

FEATURES Steel matrix with hardening treatment
Punch in special steel with slanted cut
Pneumatic drive with pedal

TECHNICAL DATAS	Compressed air supply 8 bar Working pressure 7 bar Thrust force 1200 kg Maximum stroke 30 mm Weight 30 kg												
STANDARD EQUIPEMET	Manual and maintenance with an EC declaration Pneumatic pedal with safety protection												
OPTIONS	<table border="0"> <tr> <td>Base plate with treatment group and blowing air gun for cleaning</td> <td>400756</td> <td>€ 350,00</td> </tr> <tr> <td>Spray 0.4 liters neat oil</td> <td>301437</td> <td>€ 15,00</td> </tr> <tr> <td>Station for different set / a drawing</td> <td></td> <td>ask quotation</td> </tr> <tr> <td>Consumables</td> <td></td> <td>see page 77</td> </tr> </table>	Base plate with treatment group and blowing air gun for cleaning	400756	€ 350,00	Spray 0.4 liters neat oil	301437	€ 15,00	Station for different set / a drawing		ask quotation	Consumables		see page 77
Base plate with treatment group and blowing air gun for cleaning	400756	€ 350,00											
Spray 0.4 liters neat oil	301437	€ 15,00											
Station for different set / a drawing		ask quotation											
Consumables		see page 77											
PACKAGING	<table border="0"> <tr> <td>Cardboard and protective oil (410x410x540h mm - 35 kg)</td> <td>301908</td> <td>included</td> </tr> <tr> <td>Cash timber and protective oil(410x410x540h mm - 40 kg)</td> <td>602043</td> <td>ask quotation</td> </tr> <tr> <td>Protection with bag VCI</td> <td></td> <td>ask quotation</td> </tr> </table>	Cardboard and protective oil (410x410x540h mm - 35 kg)	301908	included	Cash timber and protective oil(410x410x540h mm - 40 kg)	602043	ask quotation	Protection with bag VCI		ask quotation			
Cardboard and protective oil (410x410x540h mm - 35 kg)	301908	included											
Cash timber and protective oil(410x410x540h mm - 40 kg)	602043	ask quotation											
Protection with bag VCI		ask quotation											
SERVICES	Training at Rinaldi head office included												
WARRANTY (standard warranty 12 months)	Included: Telephone, fax and email assistance included Repair or replacement of defective parts at Rinaldi head office included Delivery charges for machine or spare parts under guarantee period excluded Traveling expenses of technician during guarantee period excluded												
<p style="text-align: center;">This price list supersedes all previous price lists. Technical data and prices can eventually vary without any notice. The prices herein indicated have to be considered vat free and ex works our warehouse if is not expressly specified.</p> <p style="text-align: center;">Pag. 58 ► 20.1 - EN</p>													

LIMA 25
filing machine

Rinaldi



code 500181
€ 2.420.00

▶ 20.1 - EN

DESCRIPTION

Shapering disc for aluminum with cut on two sides, has graduated response plan and scratchproof.

FEATURES

Worktop in steel with nickel coating
Motor protection circuit breaker

TECHNICAL DATAS	Power supplies threephase Power motor threephase Speed rotating Clamp rotation (degrees) Rotatory disc file diameter Weight	380/400-50/60 0.55 680 90...45 250 90	Volt - Hz kW r.p.m. ° mm kg
STANDARD EQUIPEMENT	Service spanners Use and maintenance manual and ce marking Disk file Ø250x20 Adjustable leveling feets (installed)		
OPTIONS	Disk files Ø250x20 Consumables	601124	€ 755,00 see page 77
SUPPLIES	Power supply threephase 220/240V-50/60Hz	603020	€ 67,00
PACKAGING	Pallet, shrink and protective oil (800x500x1250h mm - 95 kg) Pallet, cardboard and protective oil (800x500x1200h mm - 105 kg) Protection with bag VCI	301907 602008	€ 38,00 € 76,00 richiedere offerta
SERVICES	Training at Rinaldi head office Installation, start-up and training at customer's premises by staff		included ask quotation
WARRANTY (standard warranty 12 months)	Included: Telephone, fax and email assistance Repair or replacement of defective parts at Rinaldi head office Delivery charges for machine or spare parts under guarantee period Traveling expenses of technician during guarantee period		included included excluded excluded
This price list supersedes all previous price lists. Technical data and prices can eventually vary without any notice. The prices herein indicated have to be considered vat free and ex works our warehouse if is not expressly specified.			
<p align="center">Pag. 60 ► 20.1 - EN</p>			

RIS 22**RIS 44****RIS 66**

roller support bench

Rinaldi**code 603036****€ 410.00****code 603037****€ 820.00****code 603038****€ 1.230.00****▶ 20.1 - EN****DESCRIPTION**

Rolleing loading table right or left with modular structure. The version "22" has a length of 2200 mm, the version "44" of 4400 mm and the version "66" of 6600 mm.

FEATURES

Sheet structure welded painted
 2-4-6 Vertical findings support anti-scratch PVC
 4-8-12 Rollers bearing PVC (version 22-44-66)

RIS 22**RIS 44****RIS 66****Rinaldi****TECHNICAL DATAS**

Length (model 22-44-66)	2200-4400-6600	mm
roll width	300	mm
Height adjustable	900...950	mm
Capacity (model 22-44-66)	25-50-75	kg
diameter rollers	40	mm
Weight (model 22-44-66)	25-50-75	kg

STANDARD EQUIPEMET

1-2-3 Feet manufactured from sheet support (model 22-44-66)		
Connection bracket to the machine		
2-4-6 Pads adjustable (installed) (model 22-44-66)		see page 77
Consumables		

SUPPLIES

Roller of different lengths		ask quotation
-----------------------------	--	---------------

PACKAGING

Shrink and protective oil (2250x550x200-300-400h mm 35-60-85 kg)	602055	€ 84,00
Wooden crate and protective oil		ask quotation
Protection with bag VCI		ask quotation

SERVICES

Training at Rinaldi head office		included
---------------------------------	--	----------

WARRANTY (standard warranty 12 months)

Included:		
Telephone, fax and email assistance		included
Repair or replacement of defective parts at Rinaldi head office		included
Delivery charges for machine or spare parts under guarantee period		excluded
Traveling expenses of technician during guarantee period		excluded

This price list supersedes all previous price lists. Technical data and prices can eventually vary without any notice. The prices herein indicated have to be considered vat free and ex works our warehouse if is not expressly specified.

RIS 20M

RIS 40M

roller support bench

Rinaldi



code 603039

code 603040

€ 850.00

€ 1.260.00

▶ 20.1 - EN

DESCRIPTION

Roller support rail unloading right side with positioning reference stop, excluded, controlled manually operated with handle. Reading the share of metric rod aluminum screen-printed. The version "20M" has a usable length of 2000 mm, the version "40M" of 4000 mm.

FEATURES

Sheet structure welded painted and anodized aluminum
2-4 Vertical findings support anti-scratch PVC
4-8 Roller bearings in PVC (version 20M-40M)

RIS 20M**RIS 40M****Rinaldi**

TECHNICAL DATAS	Working length (model 20M-40M) Total Length (model 20M-40M) roll width Height adjustable Capacity (model 20M-40M) diameter rollers Weight (model 20M-40M)	2000-4000 2200-4400 300 900...950 25-50 40 30-55	mm mm mm mm kg mm kg
STANDARD EQUIPEMET	Service spanners Use and maintenance manual and ce marking 1-2 Feet in sheet metal pressopiegata of support (model 20M-40M) Connection bracket to the machine 4-6 Adjustment Pads orientable (installed) (model 20M-40M) Locking lever reference stop Consumables		see page 77
SUPPLIES	Roller of different lengths		ask quotation
PACKAGING	Shrink and protective oil (2250x550x200h mm - 40 kg)(model 20M) Shrink and protective oil (4500x550x200h mm - 75 kg)(model 40M) Wooden crate and protective oil Protection with bag VCI	602055 602056	€ 84,00 € 152,00 ask quotation ask quotation
SERVICES	Training at Rinaldi head office Installation, start-up and training at customer's premises by staff		included ask quotation
WARRANTY (standard warranty 12 months)	Included: Telephone, fax and email assistance Repair or replacement of defective parts at Rinaldi head office Delivery charges for machine or spare parts under guarantee period Traveling expenses of technician during guarantee period		included included excluded excluded

Il presente listino sostituisce ed annulla tutti i listini precedenti. Dati tecnici e prezzi possono subire eventuali variazioni senza preavviso. I prezzi indicati sono da considerarsi iva esclusa e franco ns sede qualora non espressamente indicato.

RIS 17V**RIS 40V****RIS 60V****Unloading roller support****Rinaldi****code 603041****€ 2.470,00****code 603042****€ 3.045,00****code 603043****€ 3.875,00****► 20.1 - EN****DESCRIPTION**

Unloading roller rail right side with positioning reference stop, manually operated with handwheel. Reading the quote on LCD digital display with battery power. The version "17 V" has an effective length of 2000 mm, the version "40 V" of 4000 mm and the version "60V" of 6000 mm.

FEATURES

- Sheet structure welded painted and anodized aluminum
- Movement reference stop rail and recirculating balls
- Transmission reference abutment with the steel strip
- 4-8-12 rolls on bearings in the PVC (version 17V-40V-60V)
- Locking lever reference stop direct flyer

RIS 17V**RIS 40V****RIS 60V****Rinaldi**

TECHNICAL DATAS	Power supply Working length (model 17V-40V-60V) Length (model17V-40V-60V) Roll width Height adjustable Reach Positioning tolerance Diameter rollers Weight (model17V-40V-60V)	2 batteries 1.5 AA 1700-4000-6000 2200-4400-6600 300 900...950 25-50-75 +/- 0.1 40 35-65-100	Volt DC mm mm mm mm kg mm mm kg
STANDARD EQUIPEMET	Service spanners Use and maintenance manual and ce marking 1-2-3 Feet manufactured from sheet support (model 17V-40V-60V) Connection bracket to the machine 2-4-6 Adjustable leveling feets(installed) (model 17V-40V-60V)	vedi pagina 77	
ACCESSORIES	Pneumatic locking cart	€ 370,00	
SUPPLIES	Roller version left side Roller of different lenghths	€ 121,00 ask quotation	
PACKAGING	Shrink and protective oil (2250x550x200h mm - 45 kg)(model 17V) Shrink and protective oil (4500x550x200h mm - 85 kg)(model 40V) Shrink and protective oil (6250x550x200h mm - 140 kg)(model 60V) Wooden crate and protective oil Protection with bag VCI	602055 602056 602057	€ 84,00 € 152,00 € 284,00 ask quotation ask quotation
SERVICES	Training at Rinaldi head office	included ask quotation	
WARRANTY (standard warranty 12 months)	Included: Telephone, fax and email assistance Repair or replacemento of defective parts at Rinaldi head office Delivery charges for machine or spare parts under guarantee period Traveling expenses of techincian during guarantee period	included included excluded excluded	
<small>This price list supersedes all previous price lists. Technical data and prices can eventually vary without any notice. The prices herein indicated have to be considered vat free and ex works our warehouse if is not expressly specified.</small>			
Pag. 66 ► 20.1 - EN			

RIS 36E

Unloading roller support rail

Rinaldi



code 603062

€ 6.720.00

► 20.1 - EN

DESCRIPTION

Unloading support roller on right side with semi-automatic positioning motion of the reference beat, driven by DC motor and encoder for the position detection system. Reading and setting the dimension on LCD digital display; the effective length of reference 3600.

FEATURES

- Sheet structure welded painted and anodized aluminum
- Movement reference stop rail and alluminum
- Transmission reference abutment toothed belt
- 8 Roller bearings in PVC
- 10 Storable lists
- 10 Locations to the list

TECHNICAL DATAS	Power supplies singlephase Working length Total Length Roll width Height adjustable Capacity Positioning tolerance diameter rollers Weight	220/240-50/60 3600 4400 300 900...950 50 +/- 0.25 40 90	Volt Hz mm mm mm mm kg mm kg
STANDARD EQUIPEMET	Service spanners Use and maintenance manual and ce marking with CE declaration 2 Feet manufactured from sheet support Connection bracket to the machine 4 Adjustable leveling feet (installed) Consumables		see page 77
SUPPLIES	Roller of different lengths		ask quotation
PACKAGING	Shrink and protective oil (4500x550x350h mm - 100 kg) Wooden crate and protective oil Protection with bag VCI	602056	€ 152,00 ask quotation ask quotation
SERVICES	Training at Rinaldi head office		included
WARRANTY (standard warranty 12 months)	Included: Telephone, fax and email assistance Repair or replacement of defective parts at Rinaldi head office Delivery charges for machine or spare parts under guarantee period Traveling expenses of technician during guarantee period		included included excluded excluded
This price list supersedes all previous price lists. Technical data and prices can eventually vary without any notice. The prices herein indicated have to be considered vat free and ex works our warehouse if is not expressly specified.			
<p style="text-align: center;">Pag. 68 ► 20.1 - EN</p>			

RIS 70E

roller support rail exhaust

Rinaldi



code 603061

€ 20.800.00

▶ 20.1 - EN

DESCRIPTION

Unloading roller support rail right side with automatic positioning movement of the reference beat, driven by DC motor and high precision position system with magnetic stripe. Possibility to be used as a pusher to provide a cutting line. Reading and setting the infos on LCD digital display. The useful length of 7000 mm reference.

FEATURES

- Structure in electro-welded painted sheet
- Movement reference edge on recirculating ball guides reference abutment
- Transmission on rack with inclined teeth
- Steel rollers coated bearings
- Storing cutting lists
- Lists can be loaded from USB
- Key barcode reader preparation

TECHNICAL DATAS	Power supplies singlephase Working length Total Length Roll width Height adjustable Capacity Positioning tolerance diameter rollers Weight	220/240-50/60 7000 7500 500 700...1100 150 +/- 0.1 50 500	Volt Hz mm mm mm mm kg mm mm kg
STANDARD EQUIPEMET	Service spanners Use and maintenance manual and ce marking with CE declaration 3 Feet in metal bent support Bracket connection to the machine 6 Adjustable leveling feet (installed) Consumables		see page 77
SUPPLIES	Roller of different lengths Connection with the machine to achieve a line		ask quotation ask quotation
PACKAGING	Shrink and protective oil (7500x650x1300h mm - 550 kg) Protection with bag VCI		€ 265,00 ask quotation
SERVICES	Training at Rinaldi head office Installation, start-up and training at customer's premises by staff		included
WARRANTY (standard warranty 12 months)	Included: Telephone, fax and email assistance Repair or replacement of defective parts at Rinaldi head office Delivery charges for machine or spare parts under guarantee period Traveling expenses of technician during guarantee period		included included excluded excluded
This price list supersedes all previous price lists. Technical data and prices can eventually vary without any notice. The prices herein indicated have to be considered vat free and ex works our warehouse if is not expressly specified.			
<p style="text-align: center;">Pag. 70 ► 20.1 - EN</p>			

ASP 15**ASP 22****ASP40**

Vacuums

Rinaldi**code 603046****€ 3.140,00****code 603047****€ 4.350,00****code 603060****€ 9.650,00****▶ 20.1 - EN****DESCRIPTION**

Industrial vacuum cleaner on wheels with centrifugal fan silenced. High airflow with a removable container for chips, designed for aluminum shavings. The filter unit equipped with pneumatic turbine allows the operator to easily clean the filter increasing its life. Available in three versions: "15" versions for individual machines, "22" double head cutting machines including automatic startup and "40" for all uses in a very intensive.

FEATURES

Tubular structure electro-welded and painted sheet
 Fan connected directly to the motor shaft motor
 Protection circuit breaker suction inlet Ø100 mm (version 15)
 2 Ø 100 mm suction mouths (version 22)
 2 Ø160 mm suction mouths (version 40)

ASP 15**ASP 22****ASP40****Rinaldi**

TECHNICAL DATAS	Power supplies threephase Power motor threephase (model 15-22-40) Speed fan Container capacity (model 15-22-40) Capacity (model 15-22-40) Depression (model15-22-40) Weight (model15-22-40)	380/400-50/60 1.5 - 2.2 - 4.0 2850 100 -160 - 160 1200 -1400 - 2200 30 - 30 - 60 100-160 - 200	Volt - Hz kW r.p.m. l m3/h mbar kg
STANDARD EQUIPEMET	Use and maintenance manual and ce marking Container with 4 castors (installed) Filter bag in polistere (istalled) 4 Wheels of which 2 are adjustable with parking brake (fitted) Pipes, connections and reductions (excluded)		see accessories
OPTIONS	Kit 1-fitting reduction + 5000 mm pipe Ø100 for miter saw Single head (TMA42-42A / TMF 55E) 1 Connection kit -reducing-lance + 5000mm pipe Ø70 for local exhaust Kit 4 Fittings -riduzioni + 15000mm pipe Ø100 for miter saw Single head (TMA 60A) Consumables	603048 603050 	€ 190,00 € 268,00 € 445,00 € 960,00 see page 77
SUPPLIES	Power supply threephase 220/240V-50/60Hz	603020	€ 67,00
PACKAGING	Pallet , shrink and protective oil (900x850x195h mm -120 kg)(model 15) Pallet , shrink and protective oil (1000x550x2150 h mm -185 kg)(model 22) Pallet , shrink and protective oil (1500x1000x2200h mm - 230 kg)(model 40) Protection with bag VCI	602033	€ 105,00 € 126,00 € 137,00 ask quotation
SERVICES	Training at Rinaldi head office		included
WARRANTY (standard warranty 12 months)	Included: Telephone, fax and email assistance Repair or replacemento of defective parts at Rinaldi head office Delivery charges for machine or spare parts under guarantee period Traveling expenses of techincian during guarantee period		included included excluded excluded
<small>This price list supersedes all previous price lists. Technical data and prices can eventually vary without any notice. The prices herein indicated have to be considered vat free and ex works our warehouse if is not expressly specified.</small>			
Pag. 72 ► 20.1 - EN			

BAS 24

Assembly bench

Rinaldi



code 500315

€ 1.085,00

▶ 20.1 - IT

DESCRIPTION

Extending assembly bench for doors and windows, large work surface consists of 6 sliding guides, easily adjustable for the assembly of frames of any size and equipped with anti-scratch rubber gaskets high adherence. The structure made entirely of painted steel equipped with adjustable feet and articulated ensures the maximum stability 'in any situation of use. Boxes for objects and supports tool holders are also included.

FEATURES

- 6 sliding guides
- Adjustable legs and jointed
- Seals in scratch-resistant rubber
- 6 boxes for objects
- 2 supports tool holder

TECHNICAL DATAS	Maximum size Minimum size Height adjustable working surface Capacity 'maximum load Weight	4000 x 2000 2000 x 1000 850...950 250 110	mm mm mm kg kg
STANDARD EQUIPEMENT	Service tools Operation and maintenance 2 Countertops accessories and tools 6 boxes for objects 2 supports for drills and screwdrivers 4 Feet adjustable and articulated		
OPTIONS	Pneumatic system (2 quick couplings)		€ 80,00
SUPPLIES	Cardboard and protective oil box (2050x850x200h mm - 150 kg) Protection with bag VCI	303149	included ask quotation
SERVICES	Training at Rinaldi head office Installation, start-up and training at customer's premises by staff		included
WARRANTY (standard warranty 12 months)	Included. Telephone, fax and email assistance Repair or replacement of defective parts at Rinaldi head office Delivery charges for machine or spare parts under guarantee period Traveling expenses of technician during guarantee period		included included excluded excluded

This price list supersedes all previous price lists. Technical data and prices can eventually vary without any notice. The prices herein indicated have to be considered vat free and ex works our warehouse if is not expressly specified.

PRO 4

Trolley for seals

Rinaldi



codice 500321

€ 500,00

▶ 20.1 - IT

DESCRIPTION Trolley for seals with 4 removable coils, adjustable.

FEATURES Tubular electro-welded and painted sheet
4 swivel casters
1 floor tool carriers
4 passes gaskets

<p>TECNICAL DATAS</p>	<p>Maximum reel diameter Hole diameter coil adjustable Maximum reel width Capacity 'maximum load Weight</p>	<p>600 150...230 210 50 28</p>	<p>mm mm mm kg kg</p>
<p>SUPPLIES</p>	<p>Cardboard and protective oil box (1150x450x150h mm - 30 kg) Protection with bag VCI</p>	<p>303199</p>	<p>included ask quotation</p>
<p>SERVICES</p>	<p>Training at Rinaldi head office Installation, start-up and training at customer's premises by staff</p>		<p>included ask quotation</p>
<p>WARRANTY (standard warranty 12 months)</p>	<p>Included: Telephone, fax and email assistance Repair or replacement of defective parts at Rinaldi head office Delivery charges for machine or spare parts under guarantee period Traveling expenses of technician during guarantee period</p>		<p>included included excluded excluded</p>
<p><small>This price list supersedes all previous price lists. Technical data and prices can eventually vary without any notice. The prices herein indicated have to be considered vat free and ex works our warehouse if is not expressly specified.</small></p>			
<p>Pag. 76 ► 20.1 - IT</p>			

DRILLS CYLINDRICAL for aluminum

Cutter pantographs mod.PAN ... and work center mod.CDL 33Q

Cylindrical cutter HSS Z = 1 Ø5 LT = 68 shank Ø8

Cylindrical cutter HSS Z = 1 Ø6 LT = 68 shank Ø8

Cylindrical cutter HSS Z = 1 Ø8 LT = 80 shank Ø8

Cylindrical cutter HSS Z = 1 Ø8 LT = 95 shank Ø8

Cylindrical cutter HSS Z = 1 Ø5 LT = 68 shank Ø10

Cylindrical cutter HSS Z = 1 Ø6 LT = 68 shank Ø10

Cylindrical cutter HSS Z = 1 Ø8 LT = 95 shank Ø10

Cylindrical cutter HSS Z = 1 Ø10 LT = 95 shank Ø10

Cylindrical cutter HSS Z = 1 Ø10 LT = 105 shank Ø10

Cylindrical cutter HM Z = 1 Ø6 LT = 60 shank Ø6

Cylindrical cutter HM Z = 1 Ø8 LT = 75 shank Ø8

Cylindrical cutter HM Z = 1 Ø10 LT = 100 shank Ø10

Cutters of different types

DRILLS CYLINDRICAL for steel and stainless steel

Cutters for pantographs mod.PAN ... and work centers mod.CDL 33Q

End Mill HSS + HM Z = 4 Ø6 LT = 60 shank Ø6 coated

End Mill HSS + HM Z = 4 Ø8 LT = 90 shank Ø8 coated

Cutters of different types

TIPS TO TWO SIZES

Tips for drilling mod.FOR 16-18P-22D-23D-33D: holes bands and hooves and expanders

HSS drill 20 6 / 11.5 LT = 120 shank Ø12x30 plan

HSS drill 20 7 / 16.3 LT = 120 shank Ø12x30 plan

Tips toratrice mod.MUL 46R: hinge holes

HSS drill 20 7/11 90° + 0° LT = 90 shank Ø10x25 plan

HSS drill 3Ø 07/11/15 LT = 90 shank Ø10x25 plan

HSS drill 20 8/12 90° + 0° LT = 90 shank Ø10x25 plan

HSS drill 3Ø 07.11.16 90° + 0° LT = 90 shank Ø10x25 plan

Tips pantograph mod.PAN 31C: Cremona holes running Ø10-12-10 mm

HSS drill 20 6 / 12x45 LT.95 shank M10 Dx plan CH8

HSS drill 20 6 / 10x40 LT.90 shank M10 Left plan CH8

HSS drill 20 6 / 10x35 LT.85 shank M10 Left plan CH8

Tips pantograph mod.PAN 31C:

Cremona holes running Ø12-14-12 mm

HSS drill 20 6 / 14x45 LT.95 shank M10 Dx plan CH8

HSS drill 20 6 / 12x40 LT.90 shank M10 Left plan CH8

HSS drill 20 6 / 12x35 LT.85 shank M10 Left plan CH8

Drills of different types

LAME

Saw blades

Blade with carbide teeth Ø420 d = 30 S = 3.8 Z = 72

Blade with carbide teeth Ø420 d = 30 S = 3.8 Z = 96

Blade with carbide teeth Ø425 d = 30 S = 4 Z = 96

Blade with carbide teeth Ø500 d = 30 S = 4 Z = 98

Blade with carbide teeth Ø550 d = 30 S = 4 Z = 140

Blade with carbide teeth Ø600 d = 30 S = 4.4 Z = 140

Blade with carbide teeth Ø600 d = 30 S = 4.7 Z = 138 (high quality')

Blade with carbide teeth Ø600 d = 30 S = 4.7 Z = 108 (high quality')

DISCO LIMA

Lima for shaper mod.LIMA 25

Disk file HSS Ø250 S = 20

FILTER BAGS

Bags for vacuum cleaner

Filter bags polyester class M (ASP 15)

Filter bags polyester class M (ASP 22 - 40)

601020	€ 32,00
302448	€ 34,00
601027	€ 36,00
601028	€ 37,00
601021	€ 37,00
601024	€ 38,00
302437	€ 53,50
601030	€ 45,00
601018	€ 49,00

601158	€ 40,00
601181	€ 70,00
601012	€ 121,00
	ask quotation

601122	€ 95,50
601170	€ 152,50
	ask quotation

200327	€ 67,00
601128	€ 127,00

201761	€ 64,00
201763	€ 83,00
601144	€ 106,50
601145	€ 133,50

201331	€ 79,00
201332	€ 79,00
201333	€ 79,00

201529	€ 85,00
201530	€ 85,00
201531	€ 85,00
	ask quotation

601025	€ 273,00
601174	€ 241,00
601026	€ 302,50
601178	€ 324,00
601180	€ 571,50
601192	€ 711,00
	€ 993,00
	€ 951,00

601124	€ 755,00
--------	----------

603051	€ 124,00
	€ 145,00

PLIERS, NUTS AND KEYS series ER		
ER collet 16 Ø4 ... 3	301396	€ 45,00
ER16 collet Ø6 ... 5	301393	€ 38,00
ER16 collet Ø8 ... 7	301394	€ 38,00
ER16 collet Ø10 ... 9	301395	€ 38,00
ER20 collet Ø4 ... 3	302587	€ 47,00
ER20 collet Ø6 ... 5	301390	€ 41,00
ER20 collet Ø8 ... 7	301391	€ 41,00
ER20 collet Ø10 ... 9	301392	€ 41,00
ER collet Ø12 20 ... 11	301399	€ 47,00
ER16 mini nut tightening clamp DIN 6499	302099	€ 58,00
ER16 collet tightening hexagonal nut DIN 6499	301388	€ 51,00
ER20 collet tightening hexagonal nut DIN 6499	301389	€ 54,00
Key ring mini ER16	302100	€ 32,00
PORT TOOLS		
Sleeves for trimming mod.INT ...		
RINALDI quick change tube Ø27 / 32 L = 100 mm	301400	€ 89,00
RINALDI quick change tube Ø27 / 32 L = 135 mm	301401	€ 56,00
RINALDI quick change tube Ø27 / 32 L = 160 mm	301402	€ 61,00
RINALDI quick change tube Ø27 / 32 L = 180 mm CCW	301403	€ 89,00
Tool holders for machining center mod. CDL 33Q		
Toolholder taper ISO30 ER16 mini L = 50 + nut (clamp excluded)	302101	€ 175,00
ISO 30 taper tool holder with blade Ø140x5 L = 130	400760	€ 515,00
Toolholder for pantographs mod.PAN 38L-38LI		
Toolholder RINALDI ER20 + hexagonal nut (clamp excluded)	400040	€ 120,50
Weldon toolholder RINALDI Ø6	400039	€ 76,50
Weldon toolholder RINALDI Ø8	400038	€ 76,50
RINALDI Weldon tool holder Ø10	400037	€ 76,50
DISTANCE FOR TUBE		
Spacers for trimming mod.INT ...		
Kit spacers mixed hole Ø32 for tube L = 135 mm	400380	€ 46,00
Kit spacers mixed hole Ø32 for tube L = 160 mm	400379	€ 51,00
FERMI AND BEATEN PIECE		
Battuta revolver 6 positions with plates for trimming mod.INT ...		
Fermo revolver 6 positions with screws for drilling mod.FOR ... and MUL 46R	400044	€ 95,00
Fermo cross carriage with lever and dowel for pantograph mod.PAN 38I-38LI	400043	€ 62,00
Fermo 5 transverse positions for pantograph mod.PAN 38I-38LI	400048	€ 32,00
	400047	€ 140,00
OIL OIL TOOL		
Spray 0.4 liters neat oil		
	301437	€ 19,00
Canister 5 liters emulsified oil (system-mist)		€ 64,00
20 liter water tank emulsified oil (system-mist)	603008	€ 32,00
1 liter oil tank full (trigger system)	603007	€ 114,00
5 liter oil tank full (trigger system)	302452	€ 48,50
1 liter oil tank full specific stainless steel (trigger system)	301441	
	302453	
LUBRICANTS		
1 liter oil tank air treatment		
	302454	€ 25,50
Grease for recirculating spheres packaging 1kg	302588	€ 285,00
Grease racks packaging 1kg	302589	€ 28,00
LABELS		
Ribbon printer 8 rolls 114x74m		
Removable white adhesive label n. 10 rolls 100x50 (1000 cadaunao labels)	604074	€ 66,00
		€ 230,00

art. 1) AGREEMENT

1.1 (Definition) – The term “machine” applies to any piece of machinery, being it a machine tool or else, as well as to machinery lines and systems; the term “goods” shall include machines, as well as tools, components, machinery parts, finished products and any other material goods.

1.2 (Formation of contract) – Acceptance on the part of the buyer of the seller’s offer or confirmation of order, even when such acceptance is made by performance and implementation of the contract, shall entail application of the general contractual conditions hereto. Such conditions shall only be waived in writing by the parties, in which case the general contractual conditions hereto shall apply to those conditions not subject the waiver. Any general conditions of the buyer shall not apply, even partially, unless the same are expressly accepted in writing by the seller. Start of performance of the contract by the seller, in the absence of specific written acceptance of the contractual conditions proposed by the buyer differing from those proposed by the seller, shall not imply acceptance of such conditions. In case the purchase agreement is transferred to a third party (leasing companies included) the buyer shall inform the same that the terms and conditions of sale will still be applied, as well as all its provisions.

1.3 (Contract modification) – Any changes to the contract proposed by the buyer shall entail a change only if the same are accepted in writing by the seller.

art. 2) DRAWING AND SPECIFICATIONS

(Non-binding data) - The weights, dimensions, capacity, prices, output and other data reported in the catalogues, prospectuses, circulars, advertisements, illustrations and price lists constitute approximate specifications. Said data are not binding unless expressly provided in the contract. Any photograph in the offer and/or in the seller’s order confirmation are not contractual and serve solely to illustrate the product.

art. 3) PRICES AND CONDITIONS OF PAYMENT

3.1 (Prices) - Merchandise prices shall always be ex-works Fratelli Rinaldi s.r.l., not including packaging, which is counted separately. At its own discretion and taking into account internal productivity conditions and work organization, Fratelli Rinaldi s.r.l. shall make changes in machine prices based on trends in the principal cost items as indicated in official reports. In its offers, the supplier shall indicate the term within which the proposed conditions should be considered valid.

3.2 (Terms and conditions of payment) – The price of the goods and any other sum owed to the seller for any reason, shall be deemed net seller’s domicile. The buyer shall make all payments promptly on the due dates agreed, even if he has not yet examined the goods. Failure to abide by the terms and conditions of the payment shall exonerate the seller from any delivery obligations including those relative to goods other than those to which such failure to comply refers and the seller shall be entitled to demand advance payment of the whole sum owed or to terminate the contract and retain as a penalty those sums paid by the buyer up to that time, save for the right to claim greater damages.

3.3 (Payments in case of seller’s breach) - The buyer shall not be entitled to claim any breach by the seller unless he is up-to-date with payments; possible breach by the seller shall not entitle the buyer to suspend or delay payments. The buyer shall, however, be entitled to claim the seller’s breach upon prior deposit with a leading Italian bank of a sum which for the whole period of the dispute shall remain equal to the sum a) of the price quotas already expired and b) the moratorium interest on the same calculated according to the rate fixed under art. 3.4. hereinbelow; and provided that the same bank has undertaken an irrevocable obligation to the seller to pay directly to the same such sums deposited, in so far as they shall be declared due to the seller by an executive judicial or arbitration order. In case of failure to comply with the obligations provided for hereto, the buyer shall, without prejudice to the moratorium interest ex art. 3.4., pay to the seller a penalty which, save for the right to claim greater damages, shall henceforth be agreed to be a further sum equal to the interest specified under art. 3.4. of the general conditions hereto, applied to any sum still owing to the seller, for the whole period of the dispute.

3.4 (Late payments) - Interest shall automatically be charged, with no notice necessary, on payments made later than the established dates, and shall be at the rate effective in the Euro zone, increased by 7%, in addition to exclusion from the guarantee ex art 7, until outstanding payments have been made.

3.5 (Import permits and other authorizations) - The buyer shall ensure that the goods can be freely imported and shall formally undertake to make full payment of the same even if limits or prohibitions have come into force in the country of destination at the time of importation.

art. 4) TITLE

4.1 (Transfer of title) - Title to the goods shall be transferred on delivery to the buyer

4.2 (Reservation of title) - In case of installment payments, the seller reserves title to the goods delivered until full payment of the price. The buyer undertakes to take all necessary measures to set up a valid reservation of title in the most extensive form permitted in favour of the seller; the buyer further undertakes to work with the seller to establish those measures required to protect the property rights of the seller. The seller shall be authorized to take, at the buyer’s expense, all necessary measures to secure reservation of title (ex art 1525 c.c.) against third parties.

4.3 (Prohibition on settlement acts) – The buyer shall not resell, assign or constitute as surety the purchased goods without having first paid the full price to the seller; any executory process taken by third parties which may effect such goods shall immediately be notified to the seller by registered letter.

4.4 (Effects of infringement of the obligations provided for herein) - In case of infringement of the buyer’s obligations provided for herein, the seller shall be entitled to terminate the contract forthwith, retaining as a penalty those sums already paid, save for the right to claim further damages.

art. 5) DELIVERY

5.1 (Incoterms) - Any references to commercial terms (Ex-Works, FOB, CIF and others) contained in the contract or in the general conditions hereto shall refer to the INCOTERMS of the International Chamber of Commerce, in the edition in force when the contract is signed, with the addition or waivers provided for by the general conditions hereto as well as those which may be agreed in writing by the parties to the contract. Any disposition of the INCOTERMS attributed exclusively to international sales, such as (unless otherwise indicated in the context) licences or import/export permits, payment of duties and other customs, attainment of customs procedures etc., shall not be applied.

5.2 (Shipment of goods) - Unless otherwise agreed, goods shall be supplied Ex Works: this shall apply whenever it is agreed that shipment of all or part of the goods shall be made by the seller. Whenever the deadline for the shipment of goods is not specified in the contract or such deadline is omitted, reference shall be made to the INCOTERM closest to the conditions of return even summarily agreed, should uncertainty arise between two or more INCOTERMS, equally compatible with the contract, the INCOTERM entailing the least extension of risk and costs for the seller shall apply, with any waivers provided in writing by the parties.

5.3 (Passage of risks) - The risks pass to the buyer as provided by the INCOTERMS. The seller shall not be liable for any loss or damage to the goods after the passage of risks. In no case shall the buyer be exonerated from his obligation to pay the price when loss or damage to the goods occurs after the passage of risks.

5.4 (Extension of delivery term) – The deadline for delivery shall be automatically extended by a time limit equal to the buyer’s delay in fulfilling the obligations provided for hereinbelow:

- a) payment of any price quota due to the seller as a deposit;
- b) opening by the buyer of any documentary credit agreed upon in pursuance of the contract;
- c) whenever the buyer or the party designated by the same is required to notify directions regarding processing, technical data or other instructions to prepare the goods, the delivery date shall be automatically extended by a period equal to the delay in sending such notice;
- d) should changes to the goods be agreed by the parties after the stipulation of the contract, the delivery date shall be automatically extended by the period reasonable required to carry out such changes.

5.5 (Seller’s obligation to deliver the goods) - The delivery dates shall be approximate in favour of the seller and shall in any case entail an allowance of a week for each month of delivery. In case of delay in delivery owing to the fault of the seller, the buyer, after having proved damages suffered by delayed delivery, shall be entitled to request as compensation and as full reimbursement of any other right or claim whatsoever, a maximum indemnity of 0,5% of the value of the outstanding delivery for each week of delay, starting from the thirtieth day after the agreed delivery date: this penalty shall not, however, exceed 5% of said value.

Whenever a delay in delivery of the goods does not rule out or prevent the normal use of the machine, such delay shall not be deemed a delay in delivery as a whole. The seller shall be entitled to deliver all or part of the goods in advance; in the case of advance delivery, the seller shall, until the date fixed for delivery, retain the right to deliver any missing parts, supply new goods to replace other goods already delivered not in compliance, as well as to correct any compliance defect of the goods, in any case the seller shall not be liable for any damages relating to advance deliveries.

When the seller is required to assemble or install the machine, starting up shall be performed on completion of such assembly or installation. Should the buyer fail to agree to starting up of the machine, or if such starting up is not performed within 30 days after completion of assembly or installation (or delayed by the buyer failing to promptly organize the starting up or because the seller deems that the necessary connections have not been made or anything else required for starting up has not been arranged, or for any other reason whatsoever not attributable to serious breach by the seller) the outcome of trial testing shall be deemed positive. In any case the buyer shall promptly make all necessary or useful arrangements for starting up to be carried out on the data fixed. All expenses incurred in performance of starting up at the buyer's premises shall be charged to said party, except for the cost of the seller's technicians attending the same.

5.6 (Buyer's obligation to take delivery of the goods) - The buyer shall always be required to take delivery of the goods, even in the case of partial deliveries and whenever the goods are delivered before the fixed delivery date or after such date, as long as the time limit for termination of the contract provided for under art. 5.5. hereinabove has not expired, and the buyer has complied with the procedure provided for therein for termination of the contract. Should the buyer fail to take delivery of the goods promptly, for reasons not attributable to the seller, the buyer shall bear all costs incurred and any sum due to the seller for whatever reason shall immediately become payable. The seller shall further be entitled: a) to store the goods at the risk, danger and expense of the buyer; or: b) ship the goods in the name and on behalf and at the expense of the buyer to the head office of the same. The buyer shall further pay to the seller a penalty of 0,5% of the value of the goods for each week of delay starting from the day fixed for delivery, save for the right to claim greater damages.

5.7 (Impediments independent of the parties' will) - The delivery date shall be extended by a period equal to the duration of the impediment, once the cause has been ascertained to be independent of the will of the seller and of the buyer, such as strikes of any type, fires, floods, power cuts, lack or shortage of raw materials, breakdowns and accidents to the seller's production plants, delays in granting authorizations by the authorities and other impediments independent of the parties' will which make delivery temporarily impossible or too onerous. When the seller learns of an impediment, he shall, within a reasonable time limit, notify the buyer of the existence of an impediment and the probable effects of the same on his obligation to deliver if such effects are not implicit in the type of impediment in question. Likewise, the seller shall notify the buyer when the impediment shall cease to exist. In no case shall the buyer or the seller be entitled to claim compensation or indemnity whatsoever due to the occurrence of the circumstances provided for herein under art. 5.7.

art. 6) TRIAL TESTING

6.1 (Scope and procedure of trial testing on seller's premises) - Any testing on the seller's premises shall be undertaken to ascertain machine compliance, in pursuance of art. 7 of the general conditions hereto, and shall take place according to the procedure agreed by the parties; failing such agreement, testing shall be performed according to the procedure usually adopted by the seller. Testing shall take place on the seller's premises, unless the same prefers to designate another place. The date fixed for testing shall be notified to the buyer with adequate prior notice to allow the buyer's personnel to be present. The buyer shall be entitled to attend the test at his own expense. The outcome of testing shall be deemed positive: a) if the buyer attends the testing, when no specific objection is recorded in writing in the testing report concerning any compliance defects of the machine during or immediately after the end of testing or b) if the buyer declares that he does not wish to attend the testing, or is not present, when any testing report drawn up by the seller fails to record any compliance defects of the machine. If the outcome of testing is negative, the seller shall correct the compliance defects recorded in the testing report. Should major changes be required to achieve machine compliance, testing may be repeated, if the seller agrees, and will be performed under the same procedure and consequences as the initial testing. The delivery dates shall be extended by a period equal to that required to make such changes or, in case of a second testing, by a period equal to the time between the first and second testing. The object of any second testing shall be confined to examining the specific defect of the machine reported in the first testing; the buyer shall in no case be entitled to claim defects outside the scope of the testing provided for hereinabove. Any testing or checks subsequent to the second trial shall be subject to the procedure provided for hereinabove, but the scope of such tests shall be confined to the outcome of the previous testing report.

6.2 (Starting up on buyer's premises) - When the same is expressly agreed in writing by the parties, the machine shall be started up on the buyer's premises. Starting up on the buyer's premises shall include:

- a) checking the removal of any compliance defects of the machine noted in the report of the last testing on the seller's premises;
- b) checking the performance, pursuant to the agreement, of assembly or installation, when the same have been carried out by the seller.

The outcome of starting up of the machine shall be deemed positive when no specific objection is recorded in writing in the starting up report concerning any compliance defects of the machine or defects in the performance of assembly or installation operations, during or immediately after the end of starting up; the buyer shall in no case be entitled to claim defects other than those covered by the provisions stated hereinabove under letters a) and b).

When the seller is not required to assemble or install the machine, the buyer shall complete such operations prior to the date fixed for starting up. The buyer shall notify the seller of the starting up date with sufficient prior notice to allow the seller's personnel to be present. Unless otherwise agreed by the parties, the buyer shall organize the starting up to take place no later than 30 days after the arrival of the machine at its place of destination; otherwise, on such date the starting up shall be deemed performed with a positive outcome.

6.3 (Effects of trial testing and starting up) - The buyer shall forfeit all rights, warranty, action and claim in respect of compliance defects and faults of the machine which with due diligence should have been detected by the buyer during the trial testing or starting up of the machine, unless such compliance defects or faults were specifically stated in writing in the testing report or in the starting up report, during or immediately after testing or starting up.

art. 7) WARRANTY

7.1 (Machine compliance) - In pursuance of the provisions of the article hereto, the seller undertakes to deliver machines in compliance with the agreement and free from defects so as to be suitable for the purposes for which machines of the same type are usually made. The seller shall in no case be required to deliver a machine suitable for a specific purpose unless such special delivery has been expressly agreed by the parties in writing. Should the buyer request supply of a machine with variations of any type and extent with respect to the machine listed in the seller's catalogue (or, in any case, request the supply of a personalized machine), the same shall notify the seller in writing of the drawings, technical documents, data and any other instructions, it being agreed that the seller shall be required to deliver a machine in compliance with such variations only if the same have been specifically confirmed in writing by the seller. A plus and minus weight tolerance up to a maximum of $\pm 10\%$ shall be allowed to be calculated on a standard machine without fixtures. Any goods other than machines shall be excluded from the warranty.

7.2 (Extension of warranty) - The seller shall not be liable for compliance defects of the machine or faults due, even indirectly, to the drawings, plans, information, software, documentation, specifications, instructions, materials, unfinished products, components, other material goods and whatever else supplied, indicated or ordered by the buyer or by third parties acting on his behalf in whatever capacity; nor shall the seller be liable for compliance defects or faults of the materials, software, unfinished products, components or any other product built-in or otherwise in the machine supplied, indicated or ordered by the buyer or by third parties acting on his behalf in whatever capacity. Further the seller shall not be liable for compliance defects of the machine or faults due to normal wear and tear of those parts which, by definition, are subject to rapid continual wear (e.g.: washers, belts, brushes, fuses, etc.). As for the accessories and products not produced by the seller (e.g.: electric spindle, numerical control, etc.), the supplier's warranty shall be applied. The warranty does not cover any aesthetic damage that does not hinder the correct working of the machine.

Likewise the seller shall not be liable for compliance defects of the machine or faults caused by failure to abide by the rules listed in the instruction manual and in any case due to bad use or treatment of the machine. Nor shall the seller be liable for compliance defects or faults resulting from incorrect use of the machine by the buyer or by the same having made changes or repairs without the prior written consent of the seller. If the machines are shipped unassembled, to be assembled by the seller, any warranty shall be deemed forfeited if assembly at the buyer's premises is not performed directly by the seller or at least under the control of his specialised personnel. In no case shall the seller be liable for compliance defects or faults caused by an event subsequent to the passage of risks to the buyer. The seller shall not guarantee that claims or rights based on the industrial or intellectual property rights of third parties do not exist in respect of the machine or documentation made known to the buyer. In no case shall the seller be held liable in respect of calculation of foundations.

7.3 (Duration of warranty) - When the parties have not agreed that the machine should be started up at the buyer's premises, this warranty shall have the duration of 12 months, starting on the delivery date. When the parties have agreed that it should be started up at the buyer's premises, this warranty shall have the same duration, but it shall begin on the date the machine was started up at the buyer's premises, and in no case shall be longer than 15 months, starting from the date the machine was delivered. Machine operation times longer than 40 hours per week shall proportionately reduce the warranty period. The warranty for pieces replaced or repaired shall expire on the same day the machine warranty expires.

7.4 (Notification of compliance defects) - Save for the provisions of art. 6 hereinabove, the buyer shall, on penalty of forfeiting the warranty, notify the compliance defect or fault of the machine to the seller specifying in detail in writing the type of defect within 15 days after discovery of such defect or after such defect should have been discovered by careful examination and testing of the machine. In no case shall notice of the compliance defect or fault be valid when made after the expiration of the warranty time limits provided for hereinabove under art. 7.3 or those otherwise agreed by the parties. The buyer shall further forfeit the warranty if he fails to agree to any reasonable check requested by the seller or, if the seller offers to replace the faulty part at his own expense, the buyer fails to return such part within a short period after such offer.

7.5 (Repairs or replacements) - Following a regular report by the buyer pursuant to Art. 7.4., the seller shall fulfill his warranty obligations by repairing and replacing the defective or flawed parts. In order to fulfill his warranty obligations, the seller may, at his discretion: a) make the repair or replacement or have an outside party do so, with travel, food and lodging costs borne by the buyer; b) have the buyer make the repairs or replacements, providing him with the relative instructions and supplying the spare parts at no charge, ex seller's works, or refunding him their cost.

7.6. (Limitation of seller's liabilities) - Save for fraud or gross negligence on the part of the seller any compensation for damages to the buyer shall not exceed the quota of the value of the machine in respect of the defective part. The warranty provided for herein shall include and replace the guarantees or liabilities provided by the law and shall exclude any other liability of the seller resulting from the goods delivered: in particular, the buyer shall not make further claims for compensation of damages, price reductions or termination of the contract. After the expiration of the warranty period no claim shall be made against the seller.

art. 8) SERVICES OF PERSONNEL

8.1 (Work to perform) - When it is agreed by the parties that personnel will be sent, the seller's personnel shall only be assigned to jobs provided in the contract.

8.2 (Buyer's obligations) - The buyer undertakes to facilitate the work of the seller's personnel in every possible way and to make arrangements for such work to begin immediately upon their arrival "in loco" and to proceed without interruption until completion. In particular, the buyer's undertakings shall include, but not be limited to:

- completing all necessary work of whatever type before the start of the work by the seller's personnel;
- preparing all installations (lights, power, water, etc.) as well as necessary apparatus and equipment including hoisting gear and internal transport.
- arranging premises fitted with locks to store tools and garments pertaining to the seller's personnel adjacent to the workplace;
- arranging "in loco" the parts to be assembled, ensuring that they are fully protected;
- arranging for any opportune auxiliary personnel
- guaranteeing the safety of the seller's personnel at all times.

8.3 (Further obligations of the buyer) - The buyer further undertakes:

- to supply midday meals for the seller's personnel under the same conditions or cost of his own personnel and, in the absence of any internal or fixed canteen, to indicate a convenient alternative;
- to find room and board for the seller's personnel near the workplace and, if not available, to supply adequate means of transport.

8.4 (Expenses) - The buyer shall bear the cost and shall pay directly all expenses necessary to fulfill his obligations provided for hereinabove under arts. 8.2., 8.3. and 8.4. as well as:

- expenses for daily travel to and from the place of accommodation to the workplace. Should the time required for such journeys (return) exceed one hour, the extra time will be calculated according to the charges provided for the hours of travel;
- medical and hospital assistance and medicines in case of illness or accident of the seller's personnel.

8.5 (Remuneration) - The parties shall establish the amount of compensation (which may vary depending on the ordinary or extraordinary nature of the service) and the conditions for reimbursement of travel, food and lodging costs, transfers, etc.

8.6 (Attendance sheets) - The buyer shall sign any attendance sheet carried by the seller's personnel in order to calculate the hours of work completed by such personnel. In the absence of the buyer's signature, the attendance sheet signed by the seller's personnel shall be accepted inter partes.

art. 9) SPARE PARTS

9.1 When expressly agreed in the contract, the seller shall supply to the charge of the buyer the spare parts he may reasonably require to use the machine for the whole period agreed by the parties and on conditions that such spare parts are ready available to the seller. The spare parts shall be supplied at the price in the seller's price list from time to time in force at the time of the buyer's order.

art.10) FINAL PROVISIONS

10.1 (Termination of contract) - Considering the nature of the contract, the machinery and the plans sold, which are customised on the customer's demand, a penalty is arranged in favour of the seller, equal to 40% of the price agreed in the sale contract as a partial compensation for damages, in case of unilateral resolution of the contract by the seller. Late payments of the penalty shall be resolved with the payment of interests in accordance with the clause 3.4, the seller reserves the right to act in case of further damages caused by this resolution or breach. The seller reserves the right to terminate the contract on occurrence of one of these conditions:

- a) in case of failure to pay or late payments of the sale price
- b) in case of incorrect preparation of the premises
- c) in case of tampering of machinery and sold goods
- d) in case of unauthorised assignment of contract
- e) in case the buyer becomes insolvent or enters into any sort of insolvency proceedings

In these cases the contract shall be terminated with a written notice sent by registered letter while the seller shall return the supplied machinery and reserve the right to ask for damages, as well as keep the deposit on the goods.

10.2 (Null articles) - Partial nullity of one article shall not entail nullity of the article as a whole and nullity of individual articles shall not entail nullity of the whole contract.

10.3. (Titles) - The title of the general conditions hereto, as well as the titles to the articles contained herein are purely indicative and shall not entail any limitation to the provisions ensuing from the same.

10.4 (Assignment of contract) - **The contract shall not be assigned by one of the parties without the written consent of the other party.**

art. 11) SETTLEMENT OF DISPUTES

11.1 (Competent court and applicable laws) - Any dispute arising out of or in relation to the contract, as well as those concerning the existence, the validity, the interpretation, the execution and the termination of the agreement, shall be settled solely by the court of law of the seller. The seller shall be entitled to take legal proceedings at the court of law of the buyer. The Italian Law shall be solely applied to any case not specified in the general terms and conditions of sale.

Представитель в России:

ООО «ПО ИП»

Тел: +7 (812)602-77-08

E-mail: info@poip.ru

www.poip.ru